

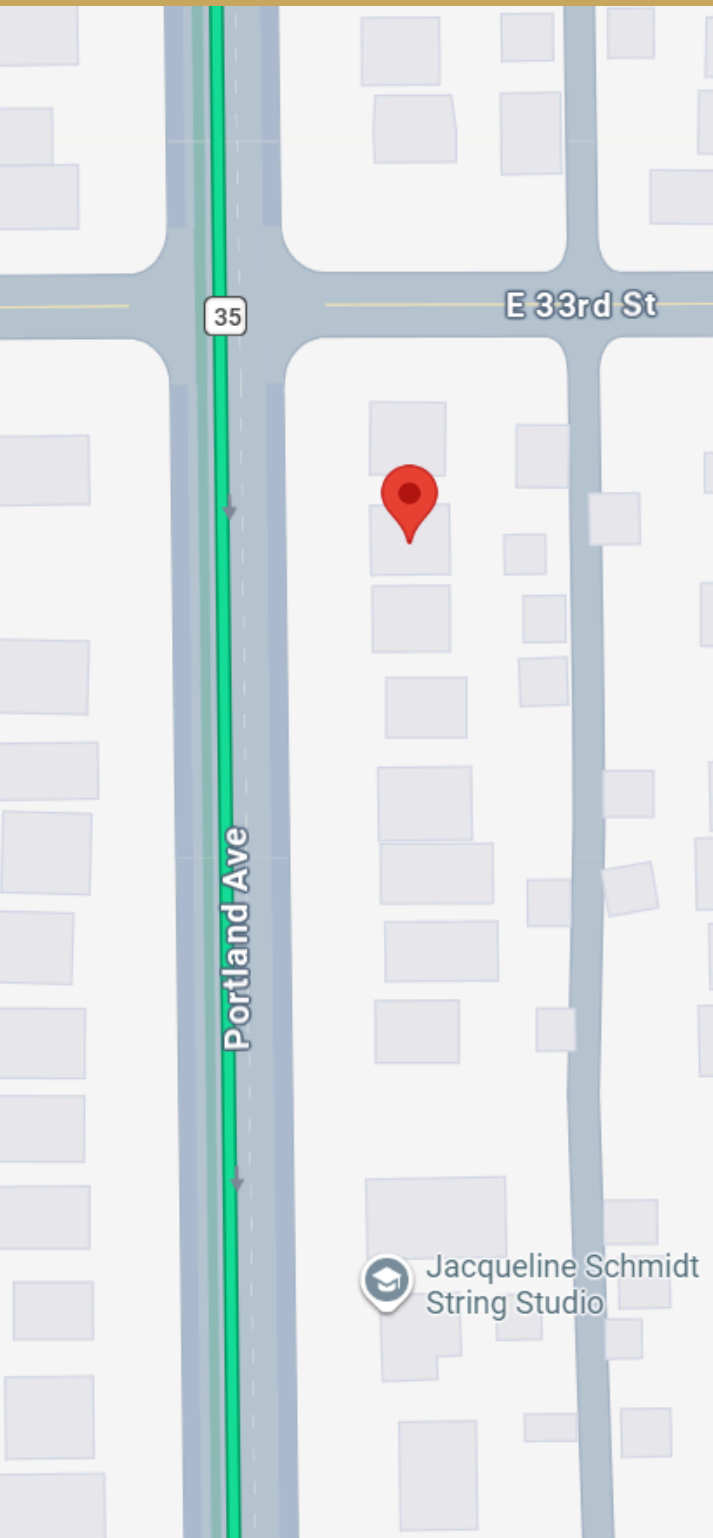


The Wunderhaus

MINNEAPOLIS, MN



Arrival



ADDRESS

3307 PORTLAND AVE.
MINNEAPOLIS, MN 55407



PARKING

- DRIVEWAY AT THE REAR OF THE PROPERTY FITS 2 CARS.
- THERE IS PARKING AT THE FRONT OF THE PROPERTY ON A FIRST-COME BASIS.
- THE GARAGE IS NOT ACCESSIBLE.



EMERGENCY

ABBOTT NORTHWESTERN HOSPITAL
800 E 28TH ST, MINNEAPOLIS, MN
612-863-4000
(1 MILE / 5 MINS DRIVE)

Welcome



WELCOME TO OUR HOME!

MY JOB IS IN LOS ANGELES, BUT MY 3 KIDS ARE IN MINNEAPOLIS, WHICH MEANS I'M ON A PLANE EVERY FEW WEEKS TO BE PRESENT IN THEIR LIVES. I WANTED THEM TO HAVE A TRUE FAMILY HOME WITH THEIR DAD, NOT A HOTEL ROOM: A GAME ROOM DOWNSTAIRS, PLUSH SOFAS MADE FOR MOVIE NIGHTS, AND A SPACE THAT'S SO JOYFUL THAT EVERY VISIT FEELS LIKE A SPECIAL EVENT, BECAUSE IT IS.

A SECOND HOUSE IN A CITY I DON'T LIVE IN FULL-TIME ISN'T SOMETHING I COULD AFFORD ON MY OWN, SO AIRBNB GUESTS ARE GENUINELY WHAT MAKE IT POSSIBLE. SO HERE YOU ARE, AND I'M TRULY GRATEFUL. EVERY STAY HELPS A LONG-DISTANCE DAD GIVE HIS KIDS SOMEWHERE THAT ACTUALLY FEELS LIKE HOME. THAT MEANS MORE THAN I CAN SAY.

TO PROVIDE A TOP NOTCH AIRBNB EXPERIENCE, MY WIFE TAL AND I HAVE ENTRUSTED THIS HOME TO JO AND HER FAMILY AT THE WORKS BNB — A SMALL, LOCAL, WONDERFULLY UN-CORPORATE PROPERTY MANAGEMENT TEAM WHO KNOW AND LOVE THIS CITY. THINK OF THEM LESS AS "THE PROPERTY MANAGER" AND MORE AS TRUSTED FRIENDS OF THE FAMILY WHO'LL TAKE GREAT CARE OF YOU.

PLEASE MAKE YOURSELF AT HOME. BECAUSE THAT'S EXACTLY WHAT THIS IS.

Evan + Tal

CONTACT US



763-600-7279



contact@theworksbnb.com

Check In

CHECK IN ANY TIME AFTER 4PM.

WE WILL SEND YOU THE ACCESS CODES AT AROUND 9AM ON THE DAY OF YOUR ARRIVAL.

YOU WILL GET THE FRONT AND BACK DOOR CODE (WE SET THE SAME CODE FOR BOTH LOCKS).

TO OPEN THE FRONT AND BACK DOORS, PRESS THE YALE SYMBOL ON THE LOCK TO ACTIVATE THE KEYPAD, ENTER THE CODE, PRESS THE CHECKMARK SYMBOL AND THE DOOR SHOULD OPEN.

Check Out

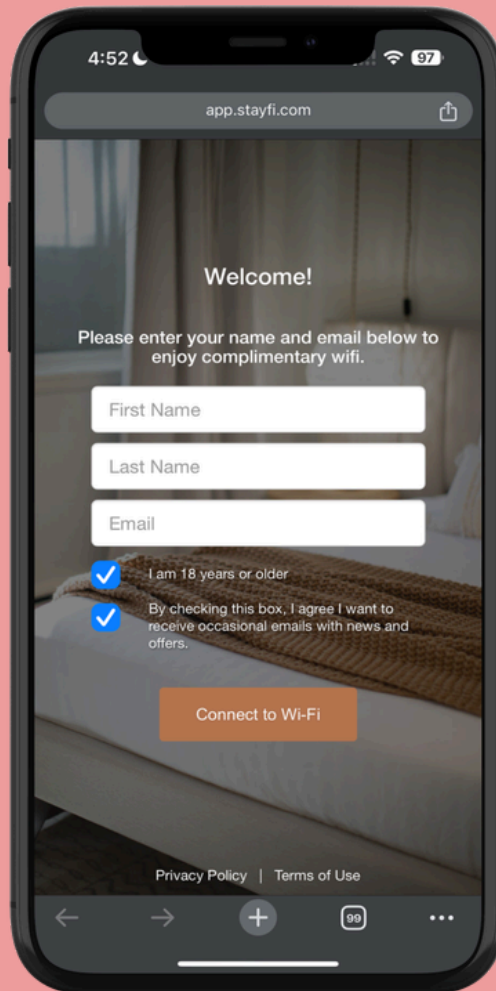
CHECK OUT IS PRIOR TO 11AM.

WE REQUEST A FEW THINGS OF YOU TO HELP US:

- LEAVE DIRTY TOWELS IN THE TUB
- EMPTY THE REFRIGERATOR OF FOOD AND PUT ITEMS IN THE TRASH
- IF YOU HAVE ADJUSTED THE THERMOSTAT SIGNIFICANTLY, PLEASE REVERT IT TO 68F
- LOAD AND START DISHWASHER
- TURN OFF ALL LIGHTS
- ENSURE FRONT AND BACK DOORS ARE LOCKED



Wi-Fi



FIND 'THE WORKS BNB GUEST' WI-FI NETWORK AND FOLLOW THE ON SCREEN PROMPTS ON THE LOGIN PAGE (PICTURED) - NO WI-FI PASSWORD NEEDED

Getting Around



BUS STOP

I-35W & LAKE STREET STATION (190 E LAKE ST). MAJOR TRANSIT STATION IS 0.5 MILES AWAY (15 MINS WALK) SERVED BY METRO TRANSIT AND SOUTHWEST TRANSIT ROUTES, INCLUDING EXPRESS AND COMMUTER BUS OPTIONS.



GAS STATION

VARIOUS HOLIDAY STATION STORES WITHIN 1 MILE (<5 MINS DRIVE).



EV CHARGING

CHARGEPOINT CHARGING STATION (3021 21ST AVE S) - 0.8 MILES AWAY (5 MINS DRIVE). PUBLIC LEVEL 2 CHARGING AVAILABLE.



RIDE-HAILING

SERVICES LIKE UBER AND LYFT ARE TYPICALLY AVAILABLE.

COOLING & HEAT

THE HOUSE HAS RADIATOR HEATING. THE THERMOSTAT IS IN THE LIVING ROOM ON THE MAIN FLOOR.

THERE IS NO CENTRAL AIR CONDITIONING, BUT THERE ARE WINDOW AIR CONDITIONERS IN THE BEDROOMS AND MAIN FLOOR.

DEVICE CHARGING

THERE IS A CHARGE DOCK IN EACH BEDROOM, BRING YOUR OWN CABLE.

SNOW DAY

SNOW CLEARING IS AUTOMATICALLY ASSIGNED AT 2".

TRASH

THE KITCHEN AND EACH BATHROOM HAVE TRASH CANS.

THE MAIN TRASH CANS ARE BY THE GARAGE AT THE REAR OF THE PROPERTY - THE CITY EMPTIES THE TRASH WEEKLY FROM THIS LOCATION.

- BLACK CAN IS TRASH
- BLUE CAN IS RECYCLING

PLEASE ENSURE NO PLASTIC BAGS ARE PUT IN THE RECYCLING, THESE BAGS MUST GO IN THE MAIN TRASH.

LAUNDRY

THE HOUSE HAS A LARGE WASHER AND DRYER IN THE BASEMENT.



- THERE ARE SMOKE / CO2 DETECTORS THROUGHOUT THE HOUSE
- THERE ARE SECURITY CAMERAS OUTSIDE THE ENTRANCE DOORS
- THE EXTERIOR DOORS (AT THE FRONT AND SIDE) DO NOT AUTOMATICALLY LOCK - PRESS THE YALE BUTTON TO LOCK THEM
- IF THERE IS A POWER ISSUE, THE BREAKER PANEL IS IN THE BASEMENT

General Info

SUPPLIES

SO YOU'RE READY TO GO ON DAY ONE, THE FOLLOWING ARE ALREADY INCLUDED:

- TOILETRIES
- TOWELS
- HAIRDRYERS
- COFFEE, TEAS & CREAMERS
- SALT & PEPPER
- OIL
- SUGAR & SWEETENER
- HAND SOAP
- DISHWASHER TABLETS & DISH SOAP
- LAUNDRY DETERGENT
- BED LINENS & PILLOWS
- VACUUM, DUST PAN & BRUSH, MOP, CLEANING PRODUCTS

NOTE: REPLENISHMENT OF SUPPLIES ARE NOT PROVIDED. HOUSEKEEPING IS AVAILABLE AT AN ADDITIONAL COST AND DEPENDING ON AVAILABILITY.

FOR YOUR KIDS

WE'VE PROVIDED SOME ESSENTIALS SO YOU CAN FEEL SAFE AND TRAVEL LIGHT.

- CHILD PROOFING KIT
- PACK & PLAY
- HIGH CHAIR
- KIDS DINNERWARE

GAMES & BOOKS

THERE ARE A SELECTION OF GAMES AND BOOKS LOCATED IN THE FOYER SIDEBOARD.

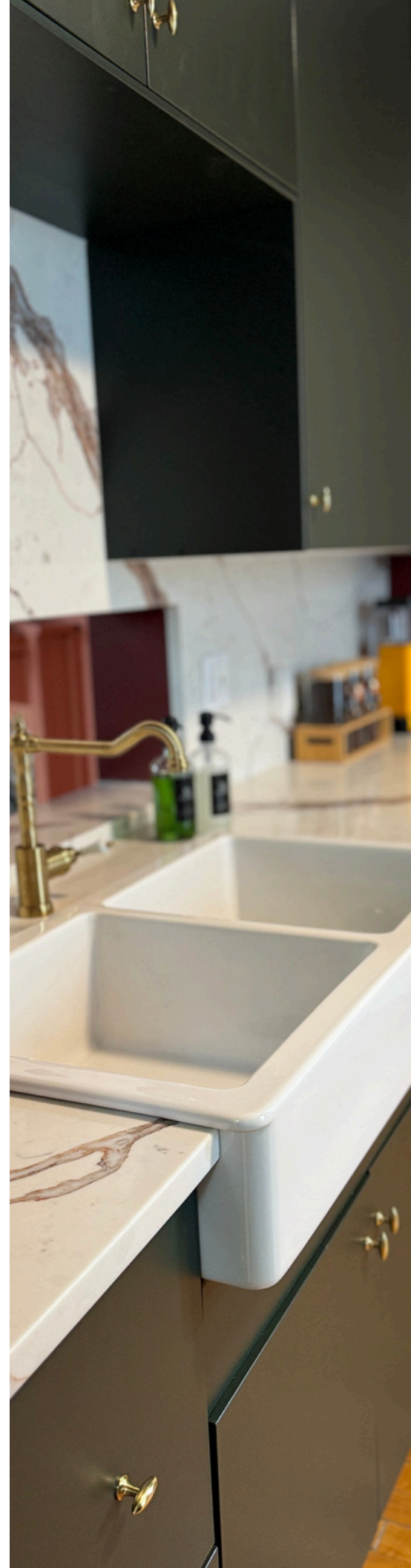
FUR BABIES

THERE'S A DOG BED IN THE BASEMENT, AND A BASKET FOR BOWLS, POOP BAGS, TOYS, BLANKETS ETC.

Kitchen & Supplies

THE KITCHEN HAS PLENTY OF EQUIPMENT AND QUALITY KITCHEN ESSENTIALS FOR YOU TO COOK UP A STORM:

- FULL SIZE FRIDGE / FREEZER WITH ICE MAKER AND WATER DISPENSER
- INDUCTION RANGE
- MICROWAVE
- DISHWASHER
- DRIP COFFEE MAKER
- FRENCH PRESS FOR COFFEE
- TOASTER
- ELECTRIC KETTLE
- BLENDER
- POTS, PANS AND DISHES
- GLASSES
- MUGS AND WINE GLASSES
- SILVERWARE
- COFFEE AND TEAS
- SUGAR AND SWEETENER
- SALT AND PEPPER
- OLIVE OIL
- CREAMERS



House Rules

PETS

WE KNOW YOUR FURRY FRIENDS ARE GOING TO LOVE THEIR STAY, HOWEVER WE DO HAVE A FEW HOUSE RULES WE ASK OF YOU:

- ALL PET WASTE MUST BE DISPOSED OF IN THE EXTERIOR TRASH CANS.
- IF YOU ARE LEAVING DOGS UNATTENDED, ENSURE THE SOFA IS COVERED WITH DOG BLANKETS AND BEDROOM DOORS ARE CLOSED TO AVOID DOGS SITTING ON THE BED OR FURNITURE.
- WE CHARGE A PET FEE OF \$100 PER STAY, WHICH COVERS THE COST OF EXTRA CLEANING. ANY DAMAGE CAUSED MAY RESULT IN EXTRA CHARGES.

NOISE

QUIET HOURS ARE 10PM TO 8AM DAILY. IF A NOISE COMPLAINT IS RECEIVED, YOU MAY BE ASKED TO VACATE THE PROPERTY WITH NO REFUNDS.

PARTIES

WE DON'T ALLOW PARTIES TO BE HELD AT THE PROPERTY, OUT OF RESPECT FOR THE NEIGHBORS AND THE ADDITIONAL WEAR AND TEAR ON THE PROPERTY. WE USE SECURITY CAMERAS OUTSIDE TO MONITOR ACCESS TO AND FROM THE PROPERTY, AND IF EVIDENCE OF LARGE PARTIES OR EVENTS IS FOUND, YOU MAY BE ASKED TO VACATE THE PROPERTY WITH NO REFUNDS.

SMOKING

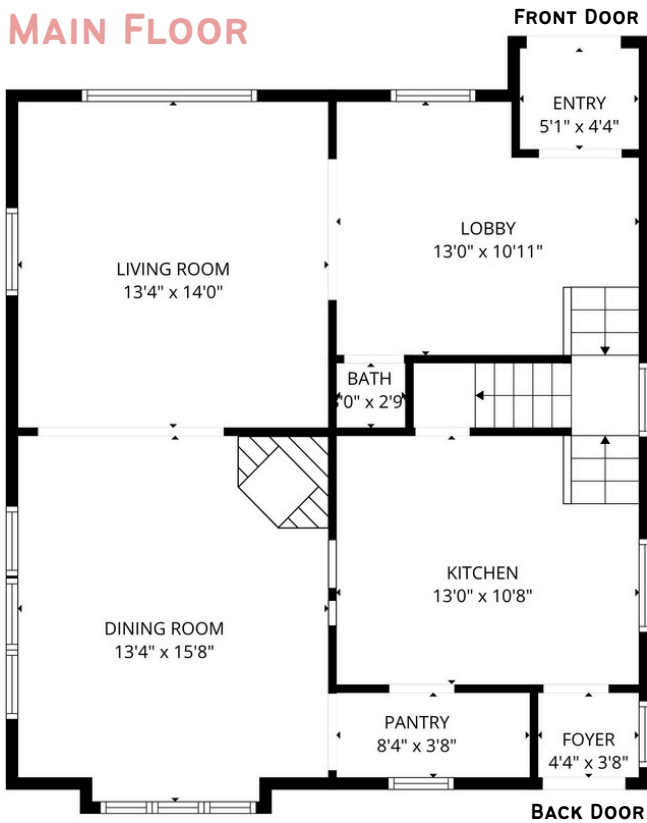
TO MAINTAIN A PLEASANT ENVIRONMENT FOR ALL OUR GUESTS, NO SMOKING IS ALLOWED IN THE PROPERTY. IF EVIDENCE OF SMOKING IS FOUND A FEE OF UP TO \$250 MAY BE CHARGED TO COVER EXTRA CLEANING.

YOU ARE FREE TO SMOKE IN THE YARD. PLEASE DISPOSE OF EXTINGUISHED CIGARETTE BUTTS IN THE TRASH CAN.

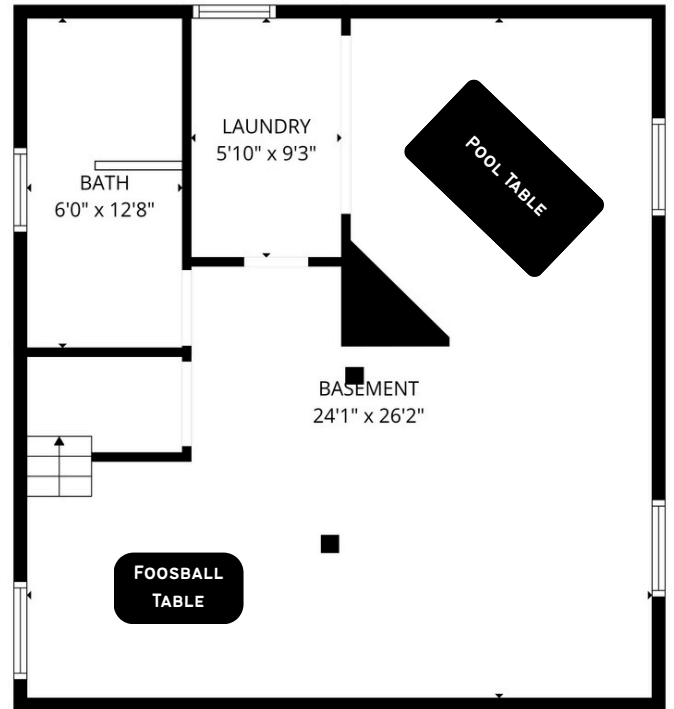
Floorplans

ALL MEASUREMENTS ARE APPROXIMATE

MAIN FLOOR



BASEMENT

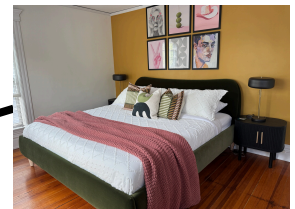


UPPER FLOOR

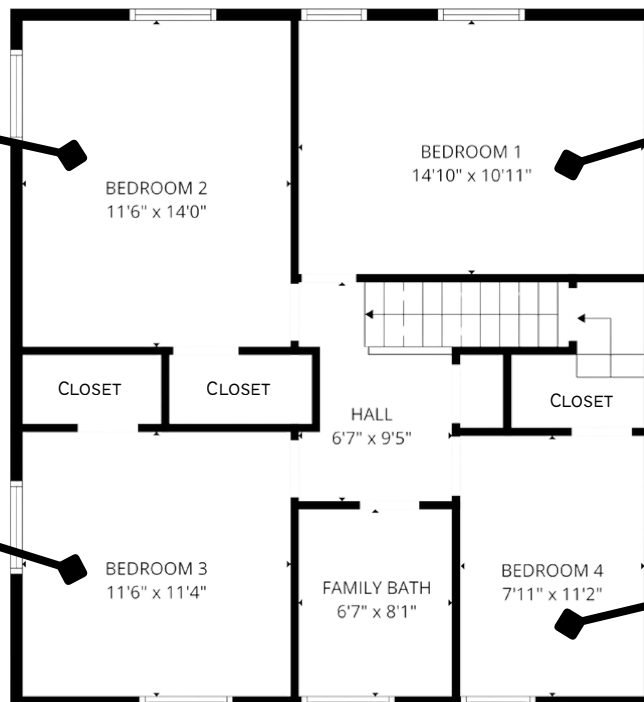
1 KING BED



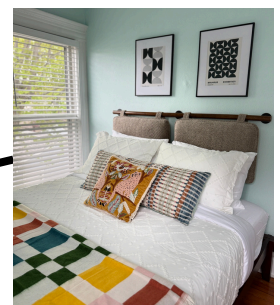
1 KING BED



2 TWIN BUNK BEDS (200LB WEIGHT LIMIT FOR TOP BUNK)



1 QUEEN BED



Minneapolis



MINNEAPOLIS INSTITUTE OF ART

WORLD-RENOWNED ART MUSEUM IS LOCATED JUST A FEW BLOCKS AWAY, FEATURING AN EXTENSIVE COLLECTION OF ART FROM AROUND THE WORLD.



LORING PARK

THIS BEAUTIFUL PARK IS LOCATED JUST A FEW BLOCKS NORTH OF BLAISDELL AVE, AND FEATURES WALKING PATHS, GARDENS, A POND, AND OUTDOOR ART INSTALLATIONS.



WALKER ART CENTER

THIS CONTEMPORARY ART MUSEUM IS LOCATED A SHORT DRIVE AWAY FROM BLAISDELL AVE AND FEATURES A WIDE RANGE OF EXHIBITS, EVENTS, AND FILM SCREENINGS.



MINNEAPOLIS SCULPTURE GARDEN

OUTDOOR PARK LOCATED NEAR WALKER ART CENTER, FEATURES A COLLECTION OF LARGE SCULPTURES BY RENOWNED ARTISTS (INCLUDING THE FAMOUS "SPOONBRIDGE & CHERRY", AND THE HAHN/COCK BLUE ROOSTER).



CHAIN OF LAKES

A GROUP OF LAKES IN THE HEART OF MINNEAPOLIS, INCLUDING LAKE HARRIET, BDE MAKA SKA, AND LAKE OF THE ISLES. ENJOY A VARIETY OF ACTIVITIES LIKE SWIMMING, BOATING, FISHING, AND BIKING OR WALKING ALONG SCENIC TRAILS THAT WIND AROUND THE LAKES.

Eating & Drinking

SAINAA CAFE

**3300 BLOOMINGTON AVE, MINNEAPOLIS
(0.4 MILES AWAY)**

SMALL NEIGHBORHOOD CAFÉ SERVING COFFEE, LIGHT SNACKS, AND SIMPLE BREAKFAST OPTIONS IN A COZY SETTING.

MODERN TIMES

**3200 CHICAGO AVE, MINNEAPOLIS
(0.6 MILES AWAY)**

NEIGHBORHOOD DINER SERVING HEARTY BREAKFAST, BRUNCH, AND COMFORT FOOD IN A CASUAL, LOCAL SETTING.

GARIBALDI MEXICAN RESTAURANT

**3100 E LAKE ST, MINNEAPOLIS
(1.2 MILES AWAY)**

CASUAL MEXICAN SPOT SERVING TACOS, BURRITOS, AND TRADITIONAL PLATES IN A RELAXED NEIGHBORHOOD SETTING.

MAWADDAH CAFE

**1201 E LAKE ST, MINNEAPOLIS
(1.5 MILES AWAY)**

CASUAL CAFÉ OFFERING COFFEE, TEA, AND MIDDLE EASTERN SNACKS WITH A RELAXED LATE-NIGHT VIBE.

VICTOR'S 1959 CAFE

**3756 GRAND AVE S, MINNEAPOLIS
(2.1 MILES AWAY)**

POPULAR CUBAN CAFÉ KNOWN FOR BIG BRUNCH PORTIONS, STRONG COFFEE, AND COLORFUL, AUTHENTIC LATIN FLAVORS..

STARGAZER

**2523 NICOLLET AVE, MINNEAPOLIS
(2.3 MILES AWAY)**

STYLISH COCKTAIL BAR FEATURING CREATIVE DRINKS AND A MODERN, UPSCALE LOUNGE FEEL, WITH STARLIGHT CEILING - A MUST SEE.

GAMETIME SPORTS BAR & ARCADE

**5101 36TH AVE S, MINNEAPOLIS
(3.0 MILES AWAY)**

FUN SPORTS BAR WITH ARCADE GAMES, DRINKS, AND A LIVELY SOCIAL ATMOSPHERE.

RED RABBIT MINNEAPOLIS

**201 N WASHINGTON AVE, MINNEAPOLIS
(4.5 MILES AWAY)**

MODERN ITALIAN RESTAURANT OFFERING PIZZA, PASTA, AND COCKTAILS IN A LIVELY, UPSCALE CASUAL ATMOSPHERE.

Local Food Stores

CUB FOODS

2601 E LAKE ST, MINNEAPOLIS

(1.5 MILES AWAY)

A FULL-SERVICE GROCERY STORE WITH FRESH PRODUCE, MEATS, BAKERY ITEMS, PANTRY STAPLES, AND A DELI SECTION FOR EVERYDAY SHOPPING NEEDS.

SEWARD COMMUNITY CO-OP

2823 E FRANKLIN AVE, MINNEAPOLIS

(1.8 MILES AWAY)

A COMMUNITY-FOCUSED GROCERY STORE FEATURING ORGANIC PRODUCE, NATURAL FOODS, BULK ITEMS, AND LOCALLY SOURCED PRODUCTS.

ALDI

3749 NICOLLET AVE, MINNEAPOLIS

(2.0 MILES AWAY)

A BUDGET-FRIENDLY GROCERY STORE OFFERING AFFORDABLE FRESH PRODUCE, MEATS, DAIRY, AND HOUSEHOLD ESSENTIALS IN A SIMPLE, EFFICIENT LAYOUT.

TARGET (RICHFIELD)

6601 NICOLLET AVE, RICHFIELD

(3.5 MILES AWAY)

A LARGE RETAIL STORE OFFERING GROCERIES, HOUSEHOLD ESSENTIALS, PHARMACY SERVICES, AND GENERAL MERCHANDISE ALL IN ONE CONVENIENT LOCATION.





THE WORKS BNB

BOOK DIRECT *DISCOUNT.*

ENJOY
10% OFF

USE CODE
BOOKDIRECT10

BOOK ANY OF OUR PROPERTIES AGAIN AND
RECEIVE 10% OFF YOUR NEXT STAY.
GUARENTEED TO BE THE LOWEST PRICE.



BOOK NOW

WWW.THEWORKSBNB.COM

*VALID FOR 2+ NIGHT STAYS. CANNOT BE
COMBINED WITH LENGTH OF STAY DISCOUNTS.

IF YOU LIKED THIS...

THEN TRY OUR OTHER
PROPERTIES...



OLIVE + OAK PLYMOUTH, MN

12 GUESTS | 6 BEDROOMS | 3.5 BATHS
HIDDEN PLAYROOM, OUTDOOR SEATING,
FIRE TABLE, KIDS PLAY AREA



THE URBAN PINE MINNEAPOLIS, MN

10 GUESTS | 5 BEDROOMS | 4 BATHS
MEDITATION SPACE, YOGA AREA, LIBRARY
WALKABLE TO EAT STREET

THE BLAIS MINNEAPOLIS, MN

10 GUESTS | 5 BEDROOMS | 4 BATHS
SPEAKEASY, GAMES ROOM, TALL
CEILINGS, WALKABLE TO EAT STREET



BOOK NOW



763-600-7279



WWW.THEWORKSBNB.COM

CASA BLANCA

MAPLE GROVE, MN

14 GUESTS | 6 BEDROOMS | 4.5 BATH
SPACIOUS, LAKE VIEW, GAMES ROOM,
LARGE TV'S, OVERSIZED MASTER, ONE
MAIN FLOOR BEDROOM



THE STORY HOUSE

CHANHASSEN, MN

6 GUESTS | 2 BEDROOMS | 2 BATH
WALKABLE TO DINNER THEATER,
CLOSE TO PAISLEY PARK, FIREPIT, ONE MAIN
FLOOR BEDROOM

HIDEOUT ON BAYVIEW

NEW YORK MILLS, MN

10 GUESTS | 5 BEDROOMS | 4 BATH
NEW CONSTRUCTION, LAKE VIEWS WITH
LEVEL LOT, LAKE ACCESS WITH DOCK,
LARGE TV'S, LARGE DINING TABLE



BOOK NOW



763-600-7279



WWW.THEWORKSBNB.COM



THE BLUE BUNGALOW

ST PAUL, MN

10 GUESTS | 3 BEDROOMS | 2 BATH
CONVENIENT FOR BOTH CITIES, 3 FLOORS,
CLOSE TO ALLIANZ STADIUM, 2 MAIN FLOOR
BEDROOMS

BACKUS BLISS

BACKUS, MN

6 GUESTS | 3 BEDROOMS | 2 BATH
CRYSTAL CLEAR LAKE, KAYAKS ON SITE,
PEACEFUL, LARGE BEDROOMS



STONE'S THROW RIVERHOUSE

STILLWATER, MN

10 GUESTS | 3 BEDROOMS | 2 BATH
SPACIOUS, CLOSE TO DOWNTOWN
RIVER VIEWS, DEDICATED WORKSPACE

THE RETRO REVIVAL

RICHFIELD, MN

6 GUESTS | 3 BEDROOMS | 2 BATH
ORIGINAL CHARM, GAMES ROOM, SAUNA,
POOL TABLE, SINGLE STORY HOME



BOOK NOW



763-600-7279



WWW.THEWORKSBNB.COM



THE SEASONS

MAPLE GROVE, MN

10 GUESTS | 5 BEDROOMS | 2 BATH
COZY, CLOSE TO SHOPS & PARKS,
UPDATED KITCHEN

PAWS & RELAX RETREAT

MINNEAPOLIS, MN

6 GUESTS | 2 BEDROOMS | 1 BATH
SUPER PET FRIENDLY FOR CATS & DOGS,
CLOSE TO BARS AND RESTAURANTS ON
CENTRAL AVENUE



THE 1910

LINDEN HILLS, MN

10 GUESTS | 3 BEDROOMS | 2 BATH
CINEMA ROOM, OUTDOOR SEATING,
WALKABLE TO LAKE HARRIET, NEW
KITCHEN, LARGE DRIVEWAY FOR PARKING


EDEN ESCAPE

EDEN PRAIRIE, MN

10 GUESTS | 5 BEDROOMS | 2 BATH
CONVENIENT, COZY, SPACIOUS,
FUSSBALL TABLE, DOUBLE GARAGE



[BOOK NOW](#)

 763-600-7279

 WWW.THEWORKSBNB.COM



THE WORKS BNB

WWW.THEWORKSBNB.COM

FOLLOW US @THEWORKSBNB

