



THE STORY HOUSE

Chanhassen, MN



Arrival



ADDRESS

222 CHAN VW, CHANHASSEN, MN 55317



PARKING

THE DRIVEWAY HOLDS TWO VEHICLES,
THERE IS ALSO ON-STREET PARKING.



EMERGENCY

M HEALTH FAIRVIEW SOUTHDALE H6401
FRANCE AVE. S, EDINA, MN, 55435
952-924-5000
(11 MILES DRIVE / 14MINS DRIVE)

Check In

CHECK IN ANY TIME AFTER 4PM.

WE WILL SEND YOU THE ACCESS CODES AT AROUND 9AM ON THE DAY OF YOUR ARRIVAL.

YOU WILL GET THE FRONT AND BACK DOOR CODE (WE SET THE SAME CODE FOR BOTH LOCKS).

TO OPEN THE FRONT AND SIDE DOORS, PRESS THE YALE SYMBOL ON THE LOCK TO ACTIVATE THE KEYPAD, KEY IN THE CODE, PRESS THE CHECKMARK SYMBOL AND THE DOOR SHOULD OPEN.

Check Out

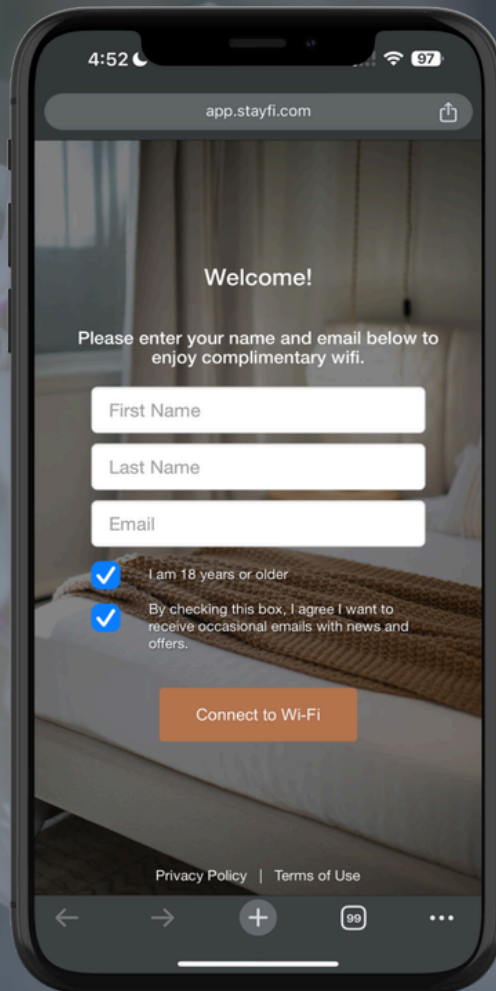
CHECK OUT IS PRIOR TO 11AM.

WE REQUEST A FEW THINGS OF YOU TO HELP US:

- LEAVE DIRTY TOWELS IN THE SHOWER OR TUB
- EMPTY THE REFRIGERATOR OF FOOD AND PUT ITEMS IN THE TRASH
- IF YOU HAVE ADJUSTED THE HVAC SIGNIFICANTLY, PLEASE REVERT IT TO 68F
- LOAD AND START DISHWASHER
- TURN OFF ALL LIGHTS
- ENSURE FRONT AND SIDE DOORS ARE LOCKED



Wi-Fi



FIND 'THE WORKS BNB GUEST' WI-FI NETWORK AND FOLLOW THE ON SCREEN PROMPTS ON THE LOGIN PAGE (PICTURED) - NO WI-FI PASSWORD NEEDED

Welcome

WELCOME TO THE STORY HOUSE, A REFINED YET COZY RETREAT WHERE OLD HOLLYWOOD GLAMOUR MEETS MIDWESTERN WARMTH. JUST MINUTES FROM CHANHASSEN DINNER THEATRES AND PAISLEY PARK, THIS HOME INVITES FAMILIES, FRIENDS, AND EVEN FURRY COMPANIONS TO RELAX, RECONNECT, AND WRITE THEIR NEXT GREAT STORY TOGETHER.

CHANHASSEN BLENDS CULTURE, NATURE, AND SMALL-TOWN CHARM IN ONE EASYGOING DESTINATION. WITH LAKE MINNETONKA'S TRAILS, DINING, AND WATERFRONT JUST MINUTES AWAY. CLOSE TO MINNEAPOLIS YET WONDERFULLY RELAXED, IT'S AN IDEAL BASE FOR FAMILIES AND COUPLES LOOKING TO ENJOY THE BEST OF MINNESOTA WITH A CREATIVE, CULTURAL TWIST.

WE'RE SO HAPPY TO HOST YOU. IF YOU NEED ANYTHING AT ALL DURING YOUR STAY, JUST REACH OUT - WE'RE HERE TO HELP MAKE YOUR TRIP UNFORGETTABLE.

WE HOPE YOU LOVE THE HOME AND AREA AS MUCH AS WE DO.

CONTACT US



763-600-7279



contact@theworksbnb.com

COOLING & HEAT

THE HOUSE HAS A CENTRAL HVAC. THE THERMOSTAT IS IN THE LIVING ROOM ON THE MAIN FLOOR.

LAUNDRY

THE HOUSE HAS A LARGE WASHER AND DRYER IN THE BASEMENT.

DEVICE CHARGING

THERE IS A CHARGE DOCK IN EACH BEDROOM. BRING YOUR OWN CABLE.

SNOW DAYS

SNOW CLEARING IS AUTOMATICALLY ASSIGNED AT 2". A SNOW SHOVEL IS IN THE GARAGE.

TRASH

THE KITCHEN AND EACH BATHROOM HAVE TRASH CANS.

THE MAIN TRASH CANS ARE BY THE GARAGE AT THE REAR OF THE PROPERTY - THE CITY EMPTIES THE TRASH WEEKLY.

PLEASE ENSURE NO PLASTIC BAGS ARE PUT IN THE RECYCLING, THESE BAGS MUST GO IN THE MAIN TRASH

FIREPIT

THERE IS A WOOD BURNING FIRE PIT IN THE BACK YARD WITH SEATING FOR 6. FIRE WOOD IS KEPT OUTSIDE.

Safety

- THERE ARE SMOKE / CARBON MONOXIDE DETECTORS THROUGHOUT THE HOUSE
- THERE ARE SECURITY CAMERAS OUTSIDE THE ENTRANCE DOORS
- THE EXTERIOR DOORS (AT THE FRONT AND SIDE) DO NOT AUTOMATICALLY LOCK - PRESS THE YALE BUTTON ON THE RESPECTIVE LOCK TO LOCK THEM
- NEVER LEAVE THE FIRE PIT UNATTENDED WHILE LIT
- IF THERE IS A POWER ISSUE, THE BREAKER PANEL IS IN THE BASEMENT

General Info

SUPPLIES

SO YOU'RE READY TO GO ON DAY ONE, THE FOLLOWING ARE ALREADY INCLUDED:

- TOILETRIES
- TOWELS
- HAIRDRYERS
- COFFEE, TEAS & CREAMERS
- SALT & PEPPER
- OIL
- SUGAR & SWEETENER
- HAND SOAP
- DISHWASHER TABLETS & DISH SOAP
- LAUNDRY DETERGENT
- BED LINENS & PILLOWS
- VACUUM, DUST PAN & BRUSH, MOP, CLEANING PRODUCTS

NOTE: REPLENISHMENT OF SUPPLIES ARE NOT PROVIDED. HOUSEKEEPING IS AVAILABLE AT AN ADDITIONAL COST AND DEPENDING ON AVAILABILITY.

FOR YOUR KIDS

WE'VE PROVIDED SOME ESSENTIALS SO YOU CAN FEEL SAFE AND TRAVEL LIGHT. THEY ARE STORED IN THE ENTRANCE HALLWAY CLOSET.

- CHILD PROOFING KIT
- PACK & PLAY
- HIGH CHAIR
- KIDS DINNERWARE (KITCHEN)

GAMES & BOOKS

THERE ARE A SELECTION OF GAMES AND BOOKS LOCATED IN THE LIVING ROOM BUILT-INS. THERE ARE ALSO TOYS IN THE SUN ROOM AND THE GAMES ROOM/PORCH.

FUR BABIES

THERE'S A PET SOFA IN THE SUN ROOM, AND A BASKET FOR BOWLS, POOP BAGS, TOYS, BLANKETS ETC.

Kitchen & Supplies

THE KITCHEN HAS PLENTY OF EQUIPMENT AND QUALITY KITCHEN ESSENTIALS FOR YOU TO COOK UP A STORM:

- FULL SIZE FRIDGE / FREEZER
- GAS RANGE
- MICROWAVE
- DISHWASHER
- KEURIG COFFEE MACHINE
- FRENCH PRESS
- TOASTER
- KETTLE
- BLENDER
- POTS, PANS AND DISHES
- GLASSES
- MUGS AND WINE GLASSES
- SILVERWARE
- COFFEE AND TEAS
- SUGAR AND SWEETENER
- SALT AND PEPPER
- OLIVE OIL
- CREAMERS



House Rules

PETS

WE KNOW YOUR FURRY FRIENDS ARE GOING TO LOVE THEIR STAY, HOWEVER WE DO HAVE A FEW HOUSE RULES WE ASK OF YOU:

- ALL PET WASTE MUST BE DISPOSED OF IN THE EXTERIOR TRASH CANS.
- IF YOU ARE LEAVING DOGS UNATTENDED, ENSURE THE SOFA IS COVERED WITH DOG BLANKETS AND BEDROOM DOORS ARE CLOSED TO AVOID DOGS SITTING ON THE BED OR FURNITURE.
- WE CHARGE A PET FEE OF \$100 PER STAY, WHICH COVERS THE COST OF EXTRA CLEANING. ANY DAMAGE CAUSED MAY RESULT IN EXTRA CHARGES.

NOISE

QUIET HOURS ARE 10PM TO 8AM DAILY. IF A NOISE COMPLAINT IS RECEIVED, YOU MAY BE ASKED TO VACATE THE PROPERTY WITH NO REFUNDS.

PARTIES

WE DON'T ALLOW PARTIES TO BE HELD AT THE PROPERTY, OUT OF RESPECT FOR THE NEIGHBORS AND THE ADDITIONAL WEAR AND TEAR ON THE PROPERTY. WE USE SECURITY CAMERAS OUTSIDE TO MONITOR ACCESS TO AND FROM THE PROPERTY, AND IF EVIDENCE OF LARGE PARTIES OR EVENTS IS FOUND, YOU MAY BE ASKED TO VACATE THE PROPERTY WITH NO REFUNDS.

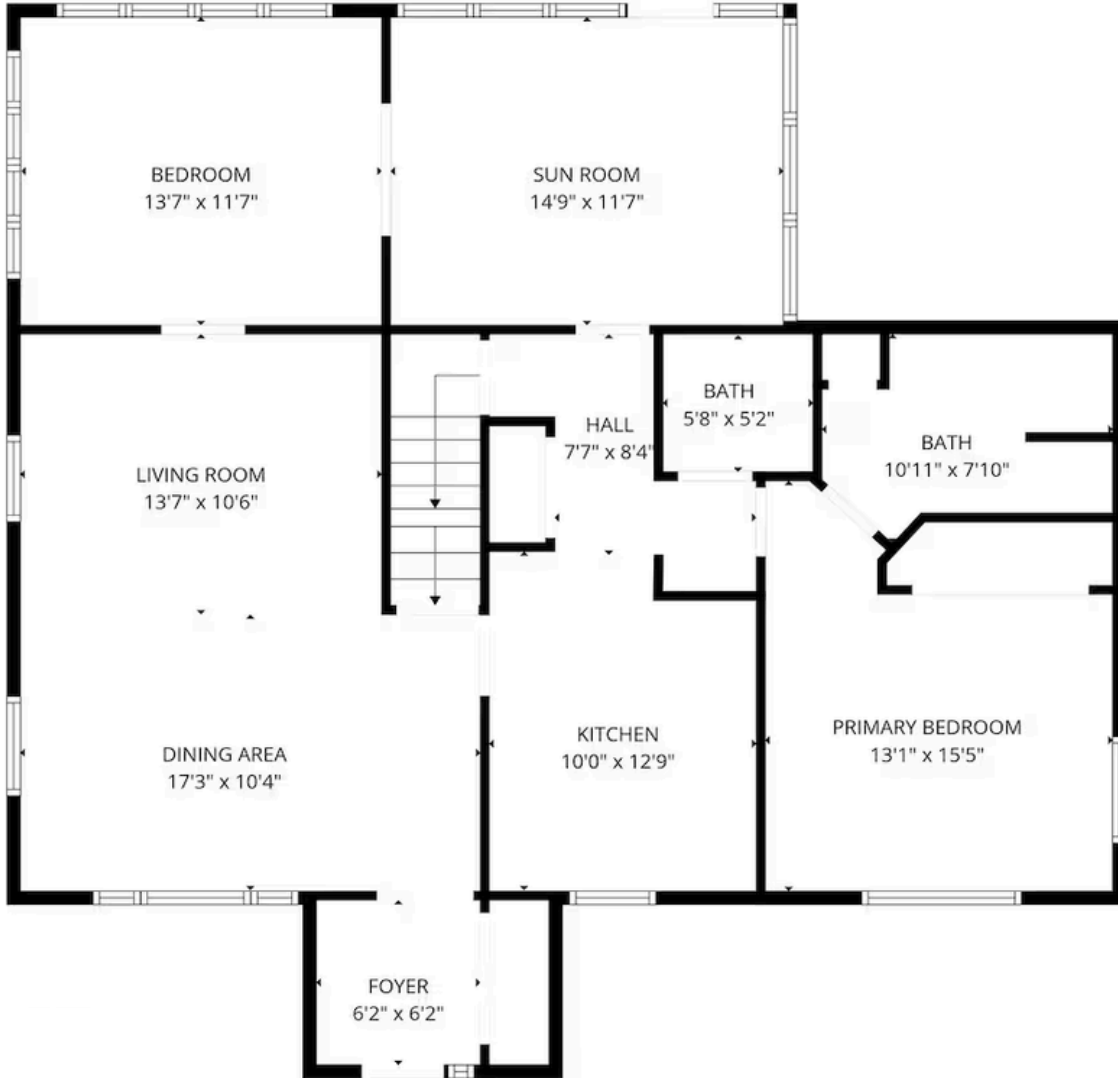
SMOKING

TO MAINTAIN A PLEASANT ENVIRONMENT FOR ALL OUR GUESTS, NO SMOKING IS ALLOWED IN THE PROPERTY. IF EVIDENCE OF SMOKING IS FOUND A FEE OF UP TO \$250 MAY BE CHARGED TO COVER EXTRA CLEANING.

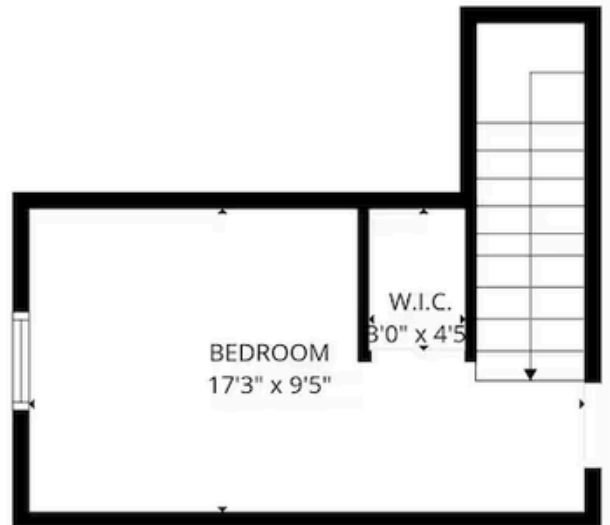
OUTDOOR LIGHTS

PLEASE MAKE SURE TO TURN OFF ANY OUTDOOR LIGHTS BY 10PM.

Floorplans



FRONT
DOOR



Getting Around



BUS STOP - SOUTHWEST TRANSIT STATION (500 MARKET ST), SOUTHWEST VILLAGE PARK & RIDE (650 SW VILLAGE DR), AND OTHER NEARBY STOPS SERVED BY SOUTHWEST TRANSIT ROUTES (COMMUTER AND EXPRESS BUS OPTIONS).



GAS STATION - KWIK TRIP
8921 CROSSROADS BLVD, CHANHASSEN
(1.8 MILES AWAY, 5-6 MINS)



EV CHARGING - KWIK TRIP EV STATION
8921 CROSSROADS BLVD, CHANHASSEN
(1.8 MILES AWAY, 5-6 MINS)



RIDE-HAILING - SERVICES LIKE UBER AND LYFT ARE TYPICALLY AVAILABLE.

Chanhassen



MINNESOTA LANDSCAPE ARBORETUM (4 MILES)

EXPLORE 1,200+ ACRES OF GARDENS, TRAILS, WOODLANDS, AND THEMED PLANT COLLECTIONS — PERFECT FOR SCENIC WALKS, PICNICS, AND NATURE LOVERS.



CHANHASSEN DINNER THEATRES (0.5 MILES)

ONE OF THE LARGEST PROFESSIONAL DINNER THEATRES IN THE U.S. OFFERING BROADWAY-STYLE PRODUCTIONS WITH DINNER AND LIVE ENTERTAINMENT. THE THEATRE IS A 10 MINUTE WALK FROM THE STORY HOUSE.



LAKE ANN PARK (2 MILES)

A POPULAR COMMUNITY PARK WITH TRAILS, PICNIC AREAS, BEACH ACCESS, AND BOAT RENTALS — GREAT FOR OUTDOOR FUN IN THE SUMMER.



LAKE MINNEWASHTA REGIONAL PARK (5 MILES)

LARGE REGIONAL PARK WITH A SWIMMING BEACH, WALKING AND BIKE TRAILS, VOLLEYBALL COURTS, PICNIC SHELTERS, AND SCENIC LAKE ACCESS.



PAISLEY PARK (4 MILES)

THE ICONIC ESTATE AND RECORDING STUDIO OF PRINCE, OFFERING TOURS AND EXHIBITS CELEBRATING HIS LIFE AND MUSIC.

Minneapolis



MINNEAPOLIS INSTITUTE OF ART

WORLD-RENOWNED ART MUSEUM IS LOCATED JUST A FEW BLOCKS AWAY, FEATURING AN EXTENSIVE COLLECTION OF ART FROM AROUND THE WORLD.



LORING PARK

THIS BEAUTIFUL PARK IS LOCATED JUST A FEW BLOCKS NORTH OF BLAISDELL AVE, AND FEATURES WALKING PATHS, GARDENS, A POND, AND OUTDOOR ART INSTALLATIONS.



WALKER ART CENTER

THIS CONTEMPORARY ART MUSEUM IS LOCATED A SHORT DRIVE AWAY FROM BLAISDELL AVE AND FEATURES A WIDE RANGE OF EXHIBITS, EVENTS, AND FILM SCREENINGS.



MINNEAPOLIS SCULPTURE GARDEN

OUTDOOR PARK LOCATED NEAR WALKER ART CENTER, FEATURES A COLLECTION OF LARGE SCULPTURES BY RENOWNED ARTISTS (INCLUDING THE FAMOUS "SPOONBRIDGE & CHERRY", AND THE HAHN/COCK BLUE ROOSTER).



CHAIN OF LAKES

A GROUP OF LAKES IN THE HEART OF MINNEAPOLIS, INCLUDING LAKE HARRIET, BDE MAKA SKA, AND LAKE OF THE ISLES. ENJOY A VARIETY OF ACTIVITIES LIKE SWIMMING, BOATING, FISHING, AND BIKING OR WALKING ALONG SCENIC TRAILS THAT WIND AROUND THE LAKES.

Eating & Drinking

TONO PIZZERIA + CHEESESTEAKS
190 LAKE DR E, CHANHASSEN
(1.1 MILES AWAY)

COZY NEIGHBORHOOD FAVORITE FOR ARTISAN BRICK-OVEN PIZZA AND PHILLY-STYLE CHEESESTEAKS — A FUN CASUAL CHOICE WITH DRINKS.

MED BOX GRILL
600 MARKET ST STE 160, CHANHASSEN
(1.2 MILES AWAY)

MEDITERRANEAN/TURKISH SPOT SERVING HOUSE GYROS, KEBABS, FALAFEL, SALADS & MORE IN A CASUAL, FLAVORFUL SETTING — GREAT FOR LUNCH OR DINNER WITH DRINKS.

BRINDISI'S PUB
501 W 78TH ST, CHANHASSEN
(1.2 MILES AWAY)

CASUAL PUB WITH A FULL BAR, CLASSIC PUB GRUB, LIVE MUSIC NIGHTS & A LIVELY PATIO — IDEAL FOR DRINKS AFTER DINNER.

THE O.G. COFFEE & WINE BAR
600 MARKET ST #110, CHANHASSEN
(1.2 MILES AWAY)

COFFEE, TEA, WINE & LITE BITES WITH A COZY, LAID-BACK VIBE — PERFECT FOR MORNING COFFEE OR AN AFTERNOON BREAK.

THALIWALA INDIAN KITCHEN
7850 MARKET BLVD, CHANHASSEN
(1.3 MILES AWAY)

AUTHENTIC INDIAN KITCHEN WITH RICH CURRIES, CLASSIC THALI PLATES & BOLD SPICES — EXCELLENT FOR DINNER OR A UNIQUE MEAL WITH FRIENDS.

TAZĀ
7905 GREAT PLAINS BLVD, CHANHASSEN
(1.4 MILES AWAY)

FRESH MEDITERRANEAN FARE (FALAFEL, GYROS, BOWLS) WITH BRIGHT FLAVORS AND A RELAXED VIBE. PERFECT FOR A DRINKS AND/OR MEAL AFTER EXPLORING THE AREA.

HACKAMORE BREWING COMPANY
18651 LAKE DR E, CHANHASSEN
(1.6 MILES AWAY)

LOCAL BREWERY WITH A ROTATING LINEUP OF APPROACHABLE CRAFT BEERS, A LAID-BACK TAPROOM & GAMES — GREAT FOR MEETING UP WITH FRIENDS.

DANDY LION COFFEE WAREHOUSE
7924 KERBER BLVD, CHANHASSEN
(1.6 MILES AWAY)

LOCAL COFFEE ROASTERY & CAFÉ WITH QUALITY BREWS AND A COZY, COMMUNITY FEEL.

Food Stores

LAKEWINDS FOOD CO-OP

435 POND PROMENADE (1.0 MILES AWAY)

A COMMUNITY-OWNED GROCERY OFFERING ORGANIC PRODUCE, LOCAL MEATS, FRESH DELI FOODS, AND NATURAL PRODUCTS.

ALDI

551 W 78TH ST (1.2 MILES AWAY)

A BUDGET-FRIENDLY GROCERY CHAIN FEATURING AFFORDABLE FRESH PRODUCE, PACKAGED FOODS, AND HOUSEHOLD ESSENTIALS.

TARGET

851 W 78TH ST (1.2 MILES AWAY)

A LARGE RETAIL STORE WITH A GROCERY SECTION, PHARMACY, STARBUCKS, AND EVERYDAY HOUSEHOLD ITEMS.

CUB FOODS

7900 MARKET BLVD (1.3 MILES AWAY)

A FULL-SERVICE GROCERY STORE WITH A WIDE SELECTION OF FRESH PRODUCE, MEATS, PANTRY STAPLES, AND A DELI.





THE WORKS BNB

WWW.THEWORKSBNB.COM

FOLLOW US @THEWORKSBNB

