

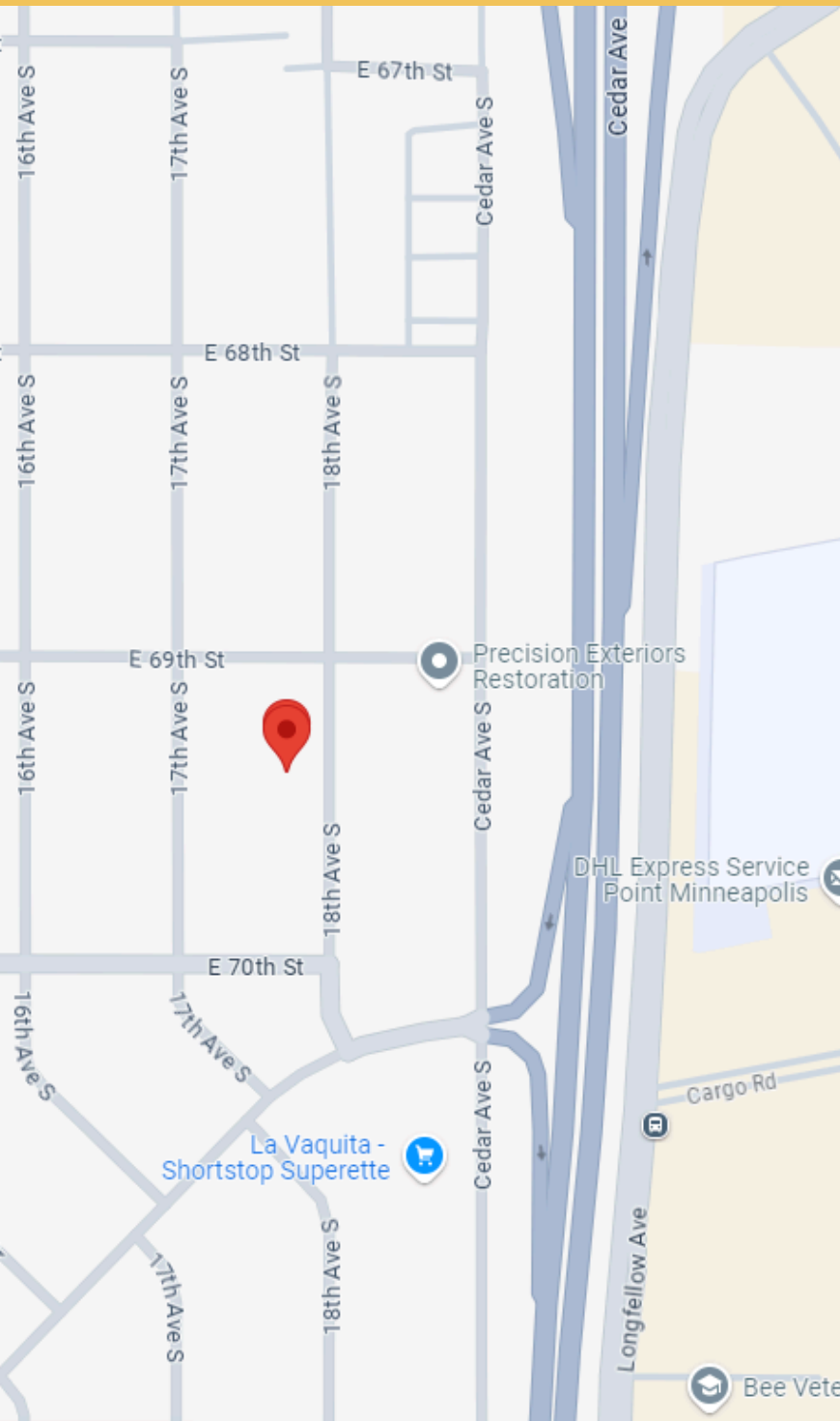


# The Retro Revival

RICHFIELD, MN



# Arrival



## ADDRESS



6914 18th Ave S, Richfield,  
MN, 55423

## NEARBY (Driving Distance)



- Mall of America - 3.3 miles
- MSP Airport - 5.3 miles

## EMERGENCY



Abbott Northwestern Hospital  
2600-2698 10th Ave S,  
Minneapolis, 55404  
(6.2 miles drive)

# Getting Around



BUS: THE CLOSEST BUS STOP IS THE STOP AT BLOOMINGTON AVE S & 69TH ST E. WHICH IS 5 MINS WALK TO THE PROPERTY.



RIDE-HAILING SERVICES: SERVICES LIKE UBER AND LYFT ARE READILY AVAILABLE IN RICHFIELD.



BIKE RENTALS: RENT A BIKE FROM ERIK'S (0.6 MILES AWAY). THEIR NUMBER IS 952-886-0800.

# Parking

- THE OVERSIZED SINGLE GARAGE CAN FIT 2 CARS IN SINGLE FILE PATTERN.
- THE DRIVEWAY CAN COMFORTABLY ACCOMMODATE 3 CARS.

# Check-In

CHECK-IN IS ANY TIME AFTER 4PM.

WE WILL SEND YOU THE ACCESS CODE TO THE DOOR THE DAY OF YOUR ARRIVAL. TOUCH THE SCREEN ON THE LOCK TO MAKE THE NUMBERS APPEAR, KEY IN THE CODE, PRESS THE CHECKMARK SYMBOL AND THE DOOR SHOULD OPEN.

# Check-Out

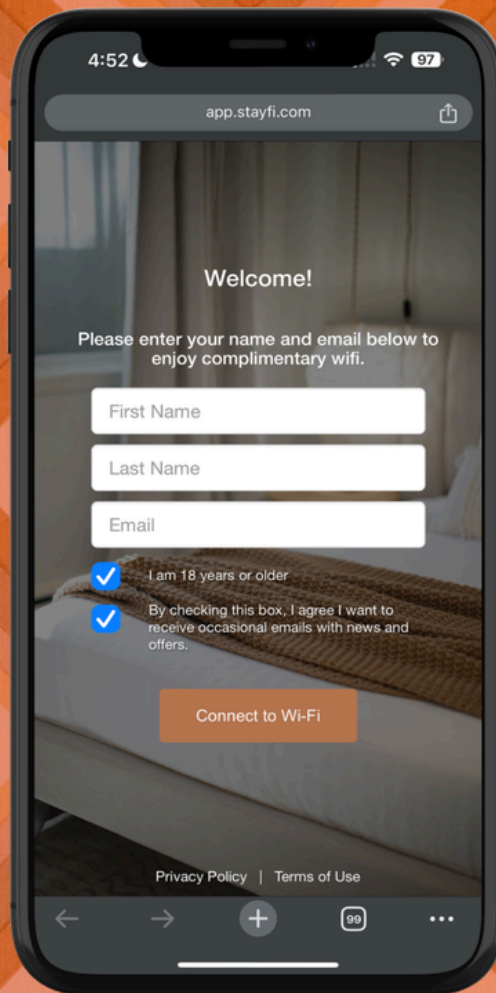
CHECK-OUT IS PRIOR TO 11AM.

WE REQUEST A FEW THINGS OF YOU TO HELP US:

- LEAVE DIRTY TOWELS IN THE BATHTUB / SHOWER
- EMPTY THE REFRIGERATOR OF FOOD
- LOAD AND START DISHWASHER
- IF YOU HAVE ADJUSTED THE HVAC SIGNIFICANTLY, PLEASE REVERT IT TO 68F
- TURN OFF ALL LIGHTS
- ENSURE THE DOORS ARE LOCKED



# Internet



FIND 'THE WORKS BNB GUEST' NETWORK AND FOLLOW THE ON SCREEN PROMPTS ON THE LOGIN PAGE (PICTURED) TO LOGIN.

**NO PASSWORD NEEDED!**

*Like what  
you see?*



*Shop our space*

# Welcome

WELCOME TO THE RETRO REVIVAL AT RICHFIELD!

STEP INTO A TIME CAPSULE OF STYLE AND COMFORT IN OUR RETRO INSPIRED HOME, LOCATED IN THE CHARMING NEIGHBORHOOD OF RICHFIELD.

THE NEIGHBORHOOD IS A DELIGHTFUL MIX OF CLASSIC SUBURBAN CHARM AND CONTEMPORARY LIVING. AS YOU STROLL THROUGH THE TREE-LINED STREETS, YOU'LL BE TRANSPORTED BACK IN TIME, WITH NEARBY VINTAGE SHOPS, COZY DINERS, AND LOCAL PARKS THAT CAPTURE THE ESSENCE OF A BYGONE ERA. WHETHER YOU'RE LOOKING TO EXPLORE OR RELAX, RICHFIELD OFFERS THE PERFECT BACKDROP WITH ITS QUIET AMBIANCE AND EASY ACCESS TO THE TWIN CITIES.

WHETHER YOU'RE HERE TO REMINISCE OR SIMPLY ENJOY A UNIQUE GETAWAY, THE HOME OFFERS THE PERFECT BLEND OF RETRO VIBES AND MODERN AMENITIES, GIVING YOU A STAY THAT'S BOTH RELAXING AND INSPIRING.



**Contact  
Us**



**PHONE**

**763-600-7279**



**EMAIL**

**[contact@theworksbnb.com](mailto:contact@theworksbnb.com)**

# General Info

## Airplane Noise

THE PROPERTY IS CLOSE TO MSP AIRPORT, SO YOU MAY HEAR AIRPLANE NOISES WHEN OUTSIDE.

FOR YOUR COMFORT, THE PROPERTY IS WELL-INSULATED TO MINIMIZE EXTERNAL NOISE.

## Trash

PLEASE DISPOSE OF ALL TRASH IN THE BINS BY THE FRONT OF THE HOUSE (THE HOME HAS BOTH TRASH AND RECYCLING BINS OUTSIDE).

WE HAVE A SERVICE THAT TAKES OUT THE TRASH THE NIGHT BEFORE ITS COLLECTION, AND BRINGS THE CAN BACK AFTER EMPTYING - THEY WILL TYPICALLY TAKE A PHOTO OF THE CANS TO SHOW THE TRASH WAS TAKEN.

## Device Charging

THERE IS ONE CHARGING PORT IN EACH BEDROOM.

## Cooling & Heat

THE HOME IS EQUIPPED WITH CENTRAL HVAC AND ELECTRICAL HEATING. THE THERMOSTAT IS IN THE LIVING ROOM NEAR THE BEDROOMS.

## Grill

THERE IS A CHARCOAL GRILL ON THE PROPERTY.

## Safety First

- THERE ARE SMOKE / CARBON MONOXIDE DETECTORS THROUGHOUT THE HOUSE.
- DOORS DO NOT AUTOMATICALLY LOCK - PRESS THE YALE BUTTON ON THE DOOR LOCK TO LOCK THEM.
- FULLY EXTINGUISH EMBERS AFTER USING THE FIREPIT BY DOUSING THEM WITH WATER AND STIRRING THE ASHES TO ENSURE NO EMBERS ARE LEFT BURNING.
- IF THERE IS A POWER ISSUE, THE BREAKER PANEL IS IN THE BASEMENT.

# More Info

## For Young Ones

WE'VE PROVIDED SOME ESSENTIALS SO YOU CAN FEEL SAFE AND TRAVEL LIGHT:

- PACK & PLAY
- HIGH CHAIR
- FEEDING SET
- THE BACK YARD IS FENCED IN WITH GATES ON BOTH SIDES OF THE HOUSE

## Games & Books

THERE ARE A SELECTION OF GAMES AND BOOKS IN THE BASEMENT CLOSET / SHELVES.

## Basement Lights

THE LIGHTS IN THE BASEMENT POOL TABLE AREA ARE CONTROLLED BY A DIMMER SWITCH. TO TURN ON THE LIGHTS, PUSH IN THE DIMMER DIAL, AND TURN THE DIAL FOR FINE TUNING.

THE DISCO BALL IS BATTERY POWERED - IF IT DOESN'T WORK, THERE SHOULD BE SPARE BATTERIES IN THE KITCHEN DRAWERS.

## Supplies

WE'VE PROVIDED ALL THE ESSENTIALS SO YOU'RE READY TO GO ON DAY ONE (NOTE THAT DAILY HOUSEKEEPING / REPLENISHMENT OF SUPPLIES ARE NOT PROVIDED).

- TOILETRIES
- TOWELS
- HAIRDRYER
- COFFEE, A SELECTION OF TEAS AND CREAMERS
- SALT AND PEPPER
- OIL
- SUGAR AND SWEETENER
- HAND SOAP
- DISHWASHER TABLETS & DISH SOAP
- LAUNDRY DETERGENT
- BED LINENS AND PILLOWS
- VACUUM, DUST PAN AND BRUSH, MOP, CLEANING PRODUCTS

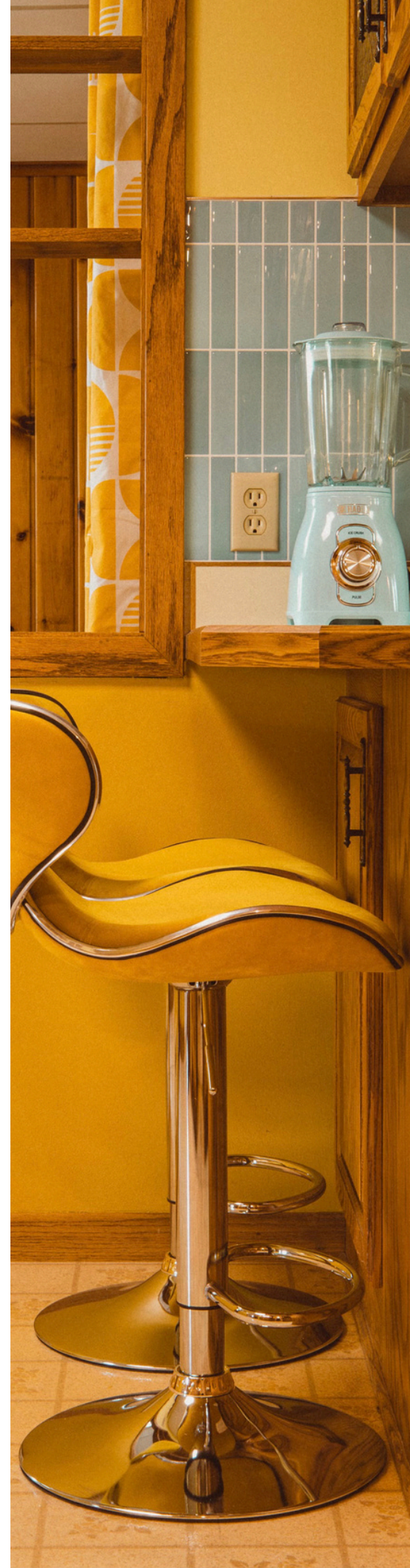
## Laundry

A WASHER AND DRYER ARE LOCATED IN THE BASEMENT. LAUNDRY DETERGENT IS PROVIDED.

# Kitchen Supplies

THE KITCHEN HAS ALL THE ESSENTIALS YOU NEED:

- FRIDGE / FREEZER WITH BRITA WATER FILTER  
& ICE CUBE TRAYS
- ELECTRIC RANGE OVEN
- COFFEE MACHINES
- TOASTER
- ELECTRIC KETTLE
- MICROWAVE
- DISHWASHER
- BLENDER
- ALL POTS, PANS AND DISHES
- GLASSES
- MUGS
- SILVERWARE



# Entertainment

## Television

A 75" TV IS AVAILABLE IN THE LIVING ROOM. THE TV IS A GOOGLE SMART TV, MEANING YOU CAN ADD ANY OF YOUR FAVORITE APPS.

STREAMING TV CHANNELS ARE AVAILABLE, HOWEVER NO CABLE TV IS PROVIDED.

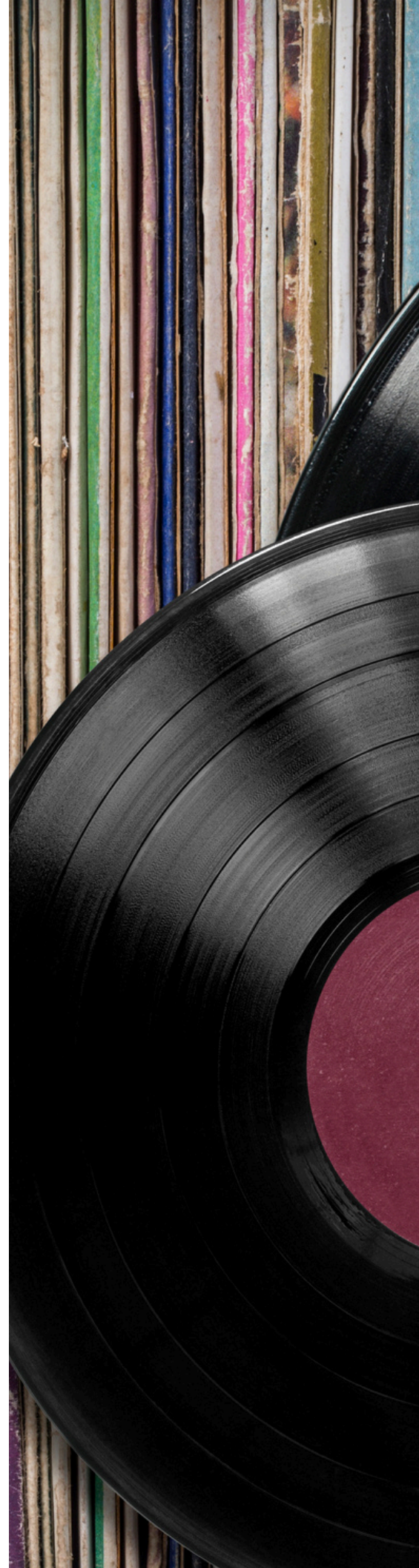
IF FOR SOME REASON THE TV DOES NOT HAVE SOUND, GO TO SETTINGS AND RESTART.

## Record Deck

THE PROPERTY HAS A RECORD DECK THAT ALSO INCLUDES A CD PLAYER AND CASSETTE TAPE PLAYER.

TO USE THE RECORD PLAYER:

- CLICK THE PHONO BUTTON.
- PUT ON YOUR FAVORITE VINYL.
- PLACE THE NEEDLE WHERE YOU WANT IT.
- PULL THE LEVER TO LOWER THE NEEDLE (ONLY USE THE LEVER, DO NOT PUSH THE NEEDLE ONTO THE VINYL OR IT COULD DAMAGE THE RECORD PLAYER).



A wooden bucket with a white handle, set against a wooden wall. The bucket is made of light-colored wood and has two dark metal bands around it. The handle is a thick, white, cylindrical piece of wood. The background is a wall of vertical wooden planks.

# Sauna

## (in the basement level)

### How To Use

- TURN ON: FLIP THE SWITCH TO "ON."
- SET TIMER: TURN THE LEFT DIAL TO YOUR DESIRED TIME (E.G., 30 MINUTES).
- ADJUST TEMPERATURE: USE THE RIGHT DIAL (E.G., III OR IV FOR MEDIUM HEAT).
- PREHEAT: WAIT 10-15 MINUTES FOR IT TO HEAT UP.
- ENJOY: SAUNA WILL AUTOMATICALLY TURN OFF WHEN THE TIMER ENDS.

### Safety

- LIMIT TIME: 15-20 MINUTES MAX.
- HYDRATE: DRINK WATER BEFORE AND AFTER.
- KEEP TEMPERATURE MODERATE: 150°F TO 195°F.
- MEDICAL ADVICE: ASK YOUR DOCTOR IF YOU HAVE ANY HEALTH ISSUES BEFORE USING THE SAUNA.
- COOL DOWN SLOWLY: NO SUDDEN COLD WATER.
- SUPERVISE KIDS: KEEP THEIR SESSIONS SHORT.
- LEAVE IF DIZZY.



# *Basement Entertainment*

## *Recreation Room*

### **DISCO BALL**

TO TURN ON THE DISCO BALL, PRESS THE BUTTON ON THE SIDE OF THE MOUNT.

### **NEON SIGN**

TO TURN THE NEON LIGHTS ON, JUST SIMPLY PRESS THE ON BUTTON. THE REMOTE IS ON THE BOOK SHELF.

## *Pool Table*

### **A FEW ASKS WHEN USING THE POOL TABLE.**

- USE GENTLE FORCE WHILE PLAYING TO AVOID DAMAGE TO THE FELT, CUES OR BALLS.
- CLEAN BALLS WITH A DAMP CLOTH IF THEY LOOK DIRTY OR ARE NOT ROLLING WELL.
- USE CHALK ON THE CUE TIP IF THE BALLS ARE NOT BEING HIT EVENLY.

# House Rules

## Noise

QUIET HOURS ARE 10PM TO 8AM DAILY. IF A NOISE COMPLAINT IS RECEIVED, YOU MAY BE ASKED TO VACATE THE PROPERTY WITH NO REFUNDS.

## Parties

THERE ARE STRICTLY NO PARTIES TO BE HELD AT THE PROPERTY.

WE USE SECURITY CAMERAS OUTSIDE TO MONITOR ACCESS TO AND FROM THE PROPERTY, AND IF EVIDENCE OF PARTIES OR EVENTS IS FOUND, YOU WILL BE CHARGED A FEE OF \$250 AND MAY BE ASKED TO VACATE THE PROPERTY WITH NO REFUNDS.

## Smoking

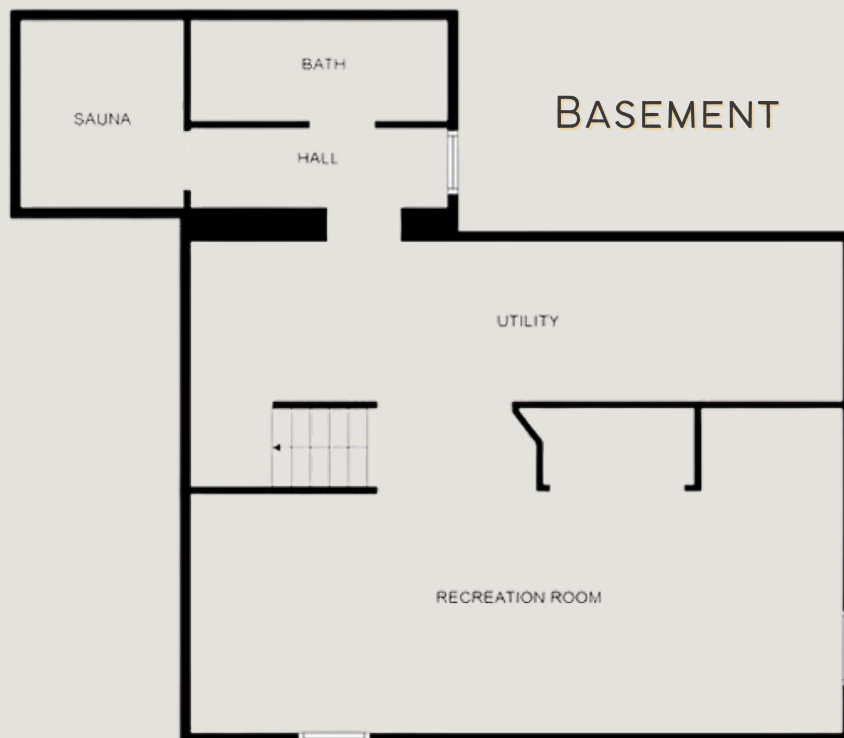
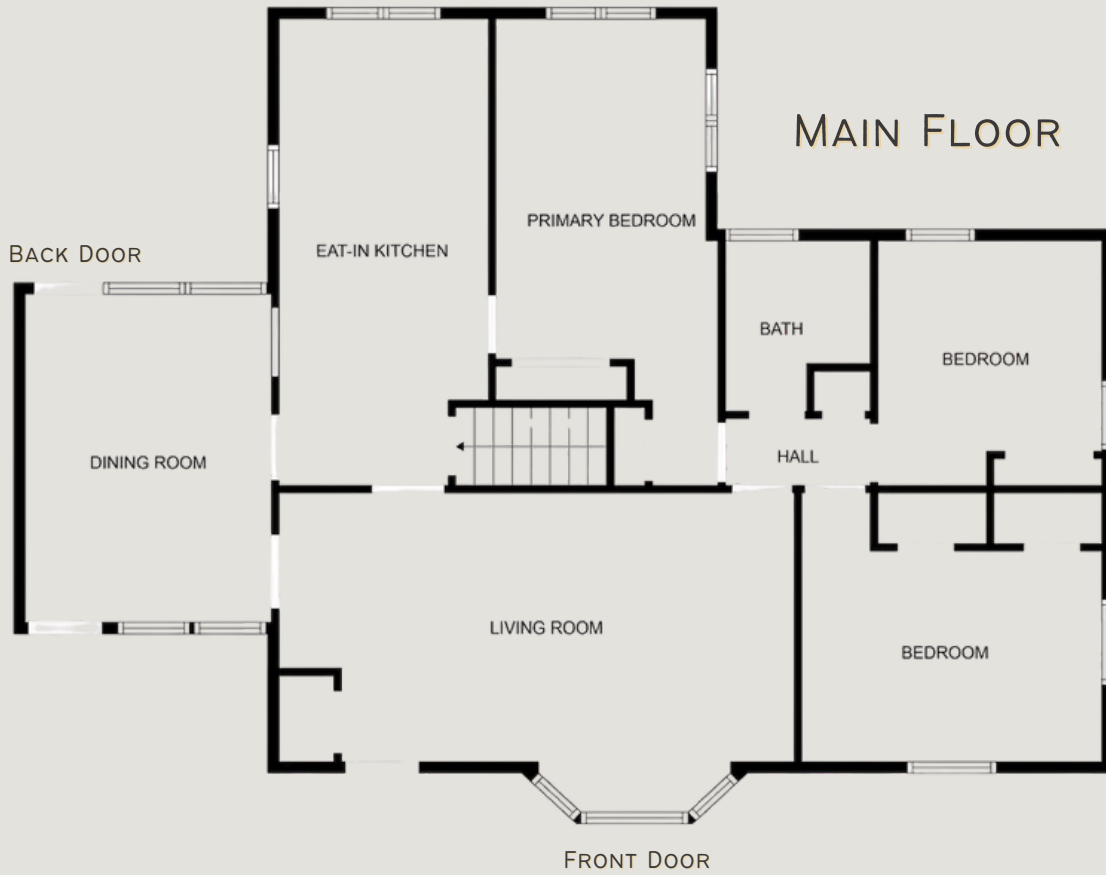
THERE IS NO SMOKING IN THIS HOME.

## Pets

WE HAVE A NO PET POLICY AT THE PROPERTY.

WE USE SECURITY CAMERAS OUTSIDE TO MONITOR ACCESS TO AND FROM THE PROPERTY, AND IF EVIDENCE OF PETS IS FOUND, YOU WILL BE CHARGED A FEE OF \$250 AND MAY BE ASKED TO VACATE THE PROPERTY WITH NO REFUNDS.

# Floorplans



# Mall of America Info

ONE OF THE LARGEST SHOPPING AND ENTERTAINMENT COMPLEXES IN THE US, FEATURING OVER 500 STORES AND NUMEROUS DINING OPTIONS, OFFERING SOMETHING FOR EVERYONE.



## SEA LIFE

AN IMMERSIVE AQUARIUM FEATURING DIVERSE MARINE LIFE. VISITORS CAN EXPLORE INTERACTIVE EXHIBITS, WALK THROUGH A TUNNEL WITH SHARKS AND RAYS, AND DISCOVER VIBRANT UNDERWATER ECOSYSTEMS, MAKING IT A CAPTIVATING EXPERIENCE FOR ALL AGES.



## FLY OVER AMERICA

EXHILARATING VIRTUAL FLIGHT EXPERIENCE, ALLOWING GUESTS TO SOAR OVER ICONIC AMERICAN LANDSCAPES AND LANDMARKS. USING STATE-OF-THE-ART TECHNOLOGY AND MOTION SEATS, IT PROVIDES A BREATHTAKING AND IMMERSIVE ADVENTURE ACROSS THE U.S.



## MUSEUM OF ILLUSIONS

AN ENGAGING EXPERIENCE WITH MIND-BENDING EXHIBITS AND OPTICAL ILLUSIONS. EXPLORE INTERACTIVE ROOMS FILLED WITH TILTED SPACES, HOLOGRAMS, AND 3D ILLUSIONS THAT PROVIDE FANTASTIC PHOTO OPPORTUNITIES AND FUN FOR ALL AGES.

# Mall of America Info



## NICKELODEON UNIVERSE

ONE OF THE LARGEST SHOPPING AND ENTERTAINMENT COMPLEXES IN THE U.S. IT FEATURES OVER 500 STORES, NUMEROUS DINING OPTIONS, AND ATTRACTIONS LIKE AN INDOOR AMUSEMENT PARK, AQUARIUM, AND MINI GOLF, OFFERING SOMETHING FOR EVERYONE.



## CMX CINEMAS MARKET

ENJOY A PREMIUM MOVIE EXPERIENCE AT CMX CINEMAS, FEATURING COMFORTABLE SEATING, CUTTING-EDGE SCREENS, AND A FULL MENU OF FOOD AND DRINKS FOR THE ULTIMATE THEATER EXPERIENCE.



## CRAYOLA EXPERIENCE

ENJOY A VIBRANT, HANDS-ON ADVENTURE AT THE CRAYOLA EXPERIENCE IN MALL OF AMERICA, WHERE KIDS CAN UNLEASH THEIR CREATIVITY WITH INTERACTIVE EXHIBITS, CRAFTS, AND CUSTOM CRAYON-MAKING ACTIVITIES.

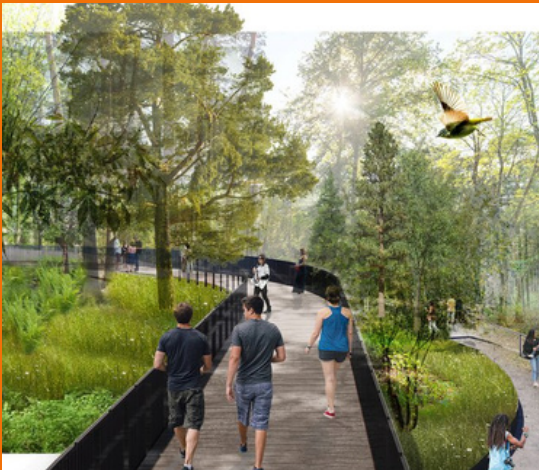


## RICK BRONSON'S - HOUSE OF COMEDY

A TOP DESTINATION FOR STAND-UP COMEDY, FEATURING PERFORMANCES FROM NATIONALLY RECOGNIZED COMEDIANS IN A LIVELY, INTIMATE SETTING. ENJOY GREAT LAUGHS, FOOD, AND DRINKS IN THIS POPULAR ENTERTAINMENT SPOT.

# Activities Nearby

THERE ARE SO MANY GREAT THINGS TO SEE AND DO IN AND AROUND RICHFIELD. HERE ARE A FEW OF THE TOP ATTRACTIONS AND ACTIVITIES THAT WE WOULD RECOMMEND:



## MINNESOTA ZOO

A PREMIER WILDLIFE DESTINATION SHOWCASING DIVERSE ANIMAL SPECIES FROM AROUND THE WORLD. VISITORS CAN EXPLORE IMMERSIVE EXHIBITS LIKE THE TROPICS TRAIL, NORTHERN TRAIL, AND THE DISCOVERY BAY AQUARIUM. THE ZOO ALSO OFFERS UNIQUE EXPERIENCES SUCH AS EDUCATIONAL PROGRAMS, ANIMAL ENCOUNTERS, AND CONSERVATION INITIATIVES, MAKING IT A FUN AND EDUCATIONAL EXPERIENCE FOR ALL AGES.



## CENTENNIAL LAKES PARK

BEAUTIFUL WALKING TRAILS, SERENE LAKE VIEWS, AND A RANGE OF OUTDOOR ACTIVITIES INCLUDING MINI-GOLF, ENJOY PICNICKING, AND SEASONAL EVENTS IN THIS PICTURESQUE PARK. IDEAL FOR A RELAXING DAY OUT OR A LEISURELY STROLL.

GREAT FOR WALKING DOGS OR A ROMANTIC STROLL.



# Biking & Hiking

- CHRISTIAN PARK - 0.3 MILES AWAY
- TAFT PARK - 1.0 MILES AWAY
- VETERANS PARK - 1.4 MILES AWAY
- WOOD LAKE NATURE CENTER - 2.3 MILES AWAY
- 77 WALKING/BIKING TRAIL BRIDGE - 4.1 MILES AWAY
- EDINA PROMENADE - 4.2 MILES AWAY
- MINNEHAHA CREEK WEST PARK - 4.4 MILES AWAY
- BIG RIVERS REGIONAL TRAIL - 5.6 MILES AWAY
- MINNESOTA RIVER GREENWAY TRAIL - 6 MILES AWAY
- NINE MILE CREEK REGIONAL TRAIL - 6 MILES AWAY
- MINNESOTA RIVER BOTTOMS TRAILS - 6.7 MILES AWAY
- MN RIVER GREENWAY TRAILHEAD - 7.9 MILES AWAY
- BROWNIE LAKE MT. BIKE TRAILS - 10.2 MILES AWAY
- CEDAR LAKE TRAIL - 10.7 MILES AWAY

# Restaurants

## **TAQUERIA LA HACIENDA**

**1645 E 66TH ST, RICHFIELD**

OFFERS AUTHENTIC MEXICAN CUISINE WITH TACOS, FRESH INGREDIENTS, AND TRADITIONAL RECIPES. IT'S THE PERFECT SPOT TO ENJOY CLASSIC MEXICAN STREET FOOD.

612-345-7118

[TAQUERIASLAHACIENDA.COM](http://TAQUERIASLAHACIENDA.COM)

## **TOMA MOJO GRILL**

**1700 E 66TH ST, RICHFIELD**

SERVES BOLD, FLAVORFUL DISHES WITH A FUSION OF LATIN AND MEDITERRANEAN INFLUENCES, OFFERING A VIBRANT AND CASUAL DINING EXPERIENCE.

612-886-3446

[TOMAMOJOGRILL.COM](http://TOMAMOJOGRILL.COM)

## **CAFÉ ZUPAS**

**1840 E 66TH ST, RICHFIELD**

LOCAL COUNTER-SERVE CHAIN KNOWN FOR HEARTY SOUPS, CREATIVE SALADS, AND A DIVERSE SELECTION OF SANDWICHES, OFFERING FRESH AND SATISFYING MEALS IN A CASUAL SETTING.

612-568-1400

[CAFEZUPAS.COM](http://CAFEZUPAS.COM)

## **PIZZA LUCÉ RICHFIELD**

**800 W 66TH ST, RICHFIELD**

LOCAL PIZZERIA CHAIN OFFERING INVENTIVE PIZZAS, PASTA, HOAGIES, AND A SELECTION OF BEER AND WINE IN A CASUAL SETTING.

612-767-8603

[PIZZALUCE.COM](http://PIZZALUCE.COM)

## **ANDALE TAQUERIA**

**7700 NICOLLET AVE, RICHFIELD**

CASUAL COUNTER-SERVE SPOT OFFERING TACOS, BURRITOS, AND OTHER MEXICAN FAVORITES IN A RELAXED SETTING.

612-259-8868

[ANDALETAKUERIAYMERCADO](http://ANDALETAKUERIAYMERCADO)

## **JAKE'S KITCHEN & BAR**

**7800 BLOOMINGTON AVE S, BLOOMINGTON**

OFFERS A LAID-BACK ATMOSPHERE WITH A DIVERSE MENU OF HEARTY COMFORT FOOD AND CLASSIC BAR FAVORITES.

952-876-0100

[MARRIOTT.COM](http://MARRIOTT.COM)

## **THE PATTY WAGON**

**6042 NICOLLET AVE, MINNEAPOLIS**

TRADITIONAL AMERICAN DINER SERVING BURGERS, SANDWICHES, AND SHAKES, WITH DELIVERY OPTIONS AND HAPPY HOURS.

612-861-5500

[THEPATTYWAGONMN.COM](http://THEPATTYWAGONMN.COM)

## **MY BURGER**

**7700 NICOLLET AVE, RICHFIELD**

LOCAL COUNTER-SERVE CHAIN SERVING BURGERS, SIDES, SHAKES, AND BREAKFAST ITEMS IN A CONTEMPORARY SETTING.

612-500-9106

[MYBURGERUSA.COM](http://MYBURGERUSA.COM)

# Restaurants

**CHINA GARDEN RESTAURANT**  
**4 W 66TH ST, MINNEAPOLIS**

SERVES CLASSIC CHINESE DISHES IN A RELAXED, FAMILY-FRIENDLY ENVIRONMENT, WITH A FOCUS ON FRESH INGREDIENTS AND TRADITIONAL FLAVORS.

612-861-1555

[CHINAGARDEN777.COM](http://CHINAGARDEN777.COM)

**EDDIE CHENG**  
**720 W 78TH ST, RICHFIELD**

BASIC NEIGHBORHOOD SPOT OFFERING TRADITIONAL CHINESE DISHES, WITH CONVENIENT TAKE-OUT AND DELIVERY OPTIONS.

612-243-0888

[EDDIECHENGRICHFIELD.COM](http://EDDIECHENGRICHFIELD.COM)

**GIORDANO'S**  
**3000 W 66TH ST, RICHFIELD**

CHICAGO STYLE DEEP-DISH PIZZA, THIS CASUAL CHAIN SERVES OTHER CLASSIC ITALIAN FOOD, PLUS BEER & WINE.

612-444-3731

[ELGUANACOBAKERYCAFE.COM](http://ELGUANACOBAKERYCAFE.COM)

**KATAKI SUSHI & RAMEN**  
**6401 NICOLLET AVE, MINNEAPOLIS**

OFFERS A FLAVORFUL SELECTION OF FRESH SUSHI AND HEARTY RAMEN IN A MODERN, INVITING ATMOSPHERE.

612-866-5034

[KATAKISUSHI.COM](http://KATAKISUSHI.COM)

**LOS SANCHEZ TAQUERIA #2**  
**2 W 66TH ST, RICHFIELD**

OFFERS AUTHENTIC MEXICAN TACOS, BURRITOS, AND OTHER FAVORITES, ALL SERVED IN A CASUAL, LAID-BACK SETTING WITH BOLD FLAVORS AND FRESH INGREDIENTS

612-861-0193

[LOSSANCHEZMEXICANRESTAURANT.COM](http://LOSSANCHEZMEXICANRESTAURANT.COM)

**AFGHAN DARBAR RESTAURANT**  
**7826 PORTLAND AVE S, BLOOMINGTON**

OFFERS AUTHENTIC AFGHAN CUISINE, FEATURING FLAVORFUL KEBABS, RICE DISHES, AND TRADITIONAL SPECIALTIES IN A WARM, WELCOMING ATMOSPHERE.

612-806-7014

[AFGHANDARBAR.COM](http://AFGHANDARBAR.COM)

# Coffee & Takes

## **PATRICK'S BAKERY & CAFE**

**2928 W 66TH ST, RICHFIELD**

STRIP-MALL GEM SERVING PASTRIES AND FRENCH BREAKFAST-TO-LUNCH FARE, WITH WINE, BEER, AND DINNER OPTIONS ON SELECT NIGHTS.

612-861-7570

[PATRICKSBAKERYCAFE.COM/](http://PATRICKSBAKERYCAFE.COM/)

## **EL GUANACO BAKERY Y CAFÉ II**

**1700 E 66TH ST, RICHFIELD, MN**

OFFERS A DELIGHTFUL ARRAY OF BAKED GOODS AND AUTHENTIC SALVADORAN DISHES, INCLUDING SAVORY PASTRIES AND TRADITIONAL CAFÉ FAVORITES.

952-737-7088

[ELGUANACOBAKERYCAFE.COM](http://ELGUANACOBAKERYCAFE.COM)

## **CAFÉ ZUPAS**

**1840 E 66TH ST, RICHFIELD**

LOCAL COUNTER-SERVE CHAIN KNOWN FOR HEARTY SOUPS, CREATIVE SALADS, AND A DIVERSE SELECTION OF SANDWICHES, OFFERING FRESH AND SATISFYING MEALS IN A CASUAL SETTING.

612-568-1400

[CAFEZUPAS.COM](http://CAFEZUPAS.COM)

## **STARBUCKS**

**6445 RICHFIELD PKWY, RICHFIELD**

SEATTLE-BASED COFFEEHOUSE CHAIN KNOWN FOR ITS SIGNATURE ROASTS, LIGHT BITES AND WIFI AVAILABILITY.

612-252-0473

[STARBUCKS.COM](http://STARBUCKS.COM)

## **CARIBOU COFFEE**

**6228 PENN AVE S, RICHFIELD**

A POPULAR COFFEEHOUSE CHAIN SERVING SIGNATURE DRINKS LIKE MOCHAS AND LATTES, PLUS FRESH COFFEE AND BREAKFAST.

612-243-1581

[CARIBOUCOFFEE.COM](http://CARIBOUCOFFEE.COM)

## **TAILGATE SPORTS CAFE**

**6050 NICOLLET AVE, MINNEAPOLIS**

RELAXED AND WELCOMING PUB KNOWN FOR ITS DRAFT BEER, CREATIVE COCKTAILS, HEARTY PUB GRUB, AND PLENTY OF SPORTS ACTION ON BIG SCREENS—PERFECT FOR UNWINDING WITH FRIENDS OR CATCHING THE GAME.

612-861-5600

[TAILGATESPORTSCAFE.COM](http://TAILGATESPORTSCAFE.COM)

# Local Stores

## TARGET

6445 RICHFIELD PKWY, RICHFIELD (4 MINS DRIVE / 1.1 MILES)

RETAIL CHAIN FOR HOME GOODS, CLOTHING, ELECTRONICS & MORE, PLUS EXCLUSIVE DESIGNER COLLECTIONS.

## WALMART SUPERCENTER

700 AMERICAN BLVD E, BLOOMINGTON (7 MINS DRIVE / 1.9 MILES)

ONE-STOP RETAIL DESTINATION OFFERING A WIDE VARIETY OF PRODUCTS, INCLUDING GROCERIES, ELECTRONICS, CLOTHING, HOME GOODS, AND MORE.

## WALGREENS

12 W 66TH ST, RICHFIELD (6 MINS DRIVE / 2.0 MILES)

DRUGSTORE CHAIN OFFERING HEALTH AND BEAUTY AIDS, PRESCRIPTIONS, PHOTO SERVICES, AND MINI-MART ESSENTIALS.

## DOLLAR TREE

64 W 66TH ST, RICHFIELD (6 MINS DRIVE / 2.0 MILES)

A POPULAR DISCOUNT CHAIN OFFERING A VARIETY OF HOUSEHOLD ITEMS, BEAUTY PRODUCTS, FOOD, AND MORE, ALL AT AFFORDABLE PRICES. IT'S THE GO-TO DESTINATION FOR BUDGET-FRIENDLY SHOPPING ON EVERYDAY ESSENTIALS.





THE WORKS BNB

[WWW.THEWORKSBNB.COM](http://WWW.THEWORKSBNB.COM)

FOLLOW US @BRITFLIPPER

