

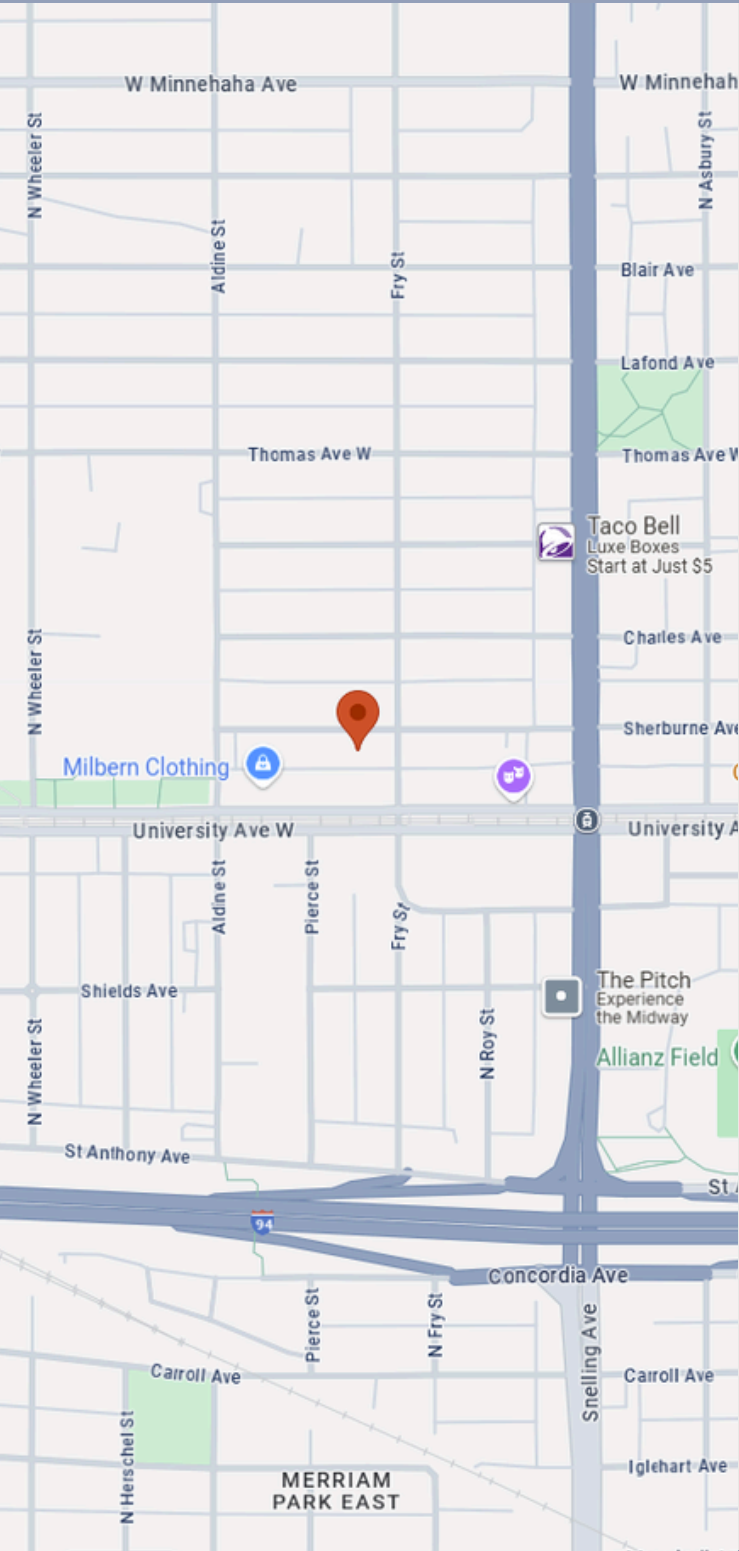


# THE BLUE BUNGALOW

St Paul, MN



# Arrival



## ADDRESS

1650 SHERBURNE AVE, ST PAUL, 55104



## PARKING

THERE IS STREET PARKING AT THE FRONT OF THE PROPERTY (FIRST-COME BASIS).

THERE ARE 2 OFF-STREET PARKING SPACES AT THE BACK OF THE PROPERTY NEXT TO THE GARAGE.

THE SINGLE GARAGE AT THE REAR OF THE PROPERTY CAN BE USED - THE CODE WILL BE SENT WITH YOUR DOOR CODES.

NOTE: STREET PARKING ON STADIUM DAYS CAN BE DIFFICULT - WE CANNOT RESERVE PARKING OUTSIDE THE PROPERTY.



## EMERGENCY

REGIONS HOSPITAL  
640 JACKSON STREET, ST PAUL, 55101  
952-993-5000  
(4.8 MILES DRIVE / 11MINS DRIVE)

# Check In

CHECK IN ANY TIME AFTER 4PM.

WE WILL SEND YOU THE ACCESS CODES AT AROUND 9AM ON THE DAY OF YOUR ARRIVAL.

YOU WILL GET 2 CODES:

- FRONT & SIDE DOOR CODE (SAME FOR BOTH)
- GARAGE CODE

TO OPEN THE FRONT AND SIDE DOOR, PRESS THE YALE SYMBOL ON THE LOCK TO ACTIVATE THE KEYPAD, KEY IN THE CODE, PRESS THE CHECKMARK SYMBOL AND THE DOOR SHOULD OPEN. PRESS THE LATCH TO OPEN THE DOOR.

# Check Out

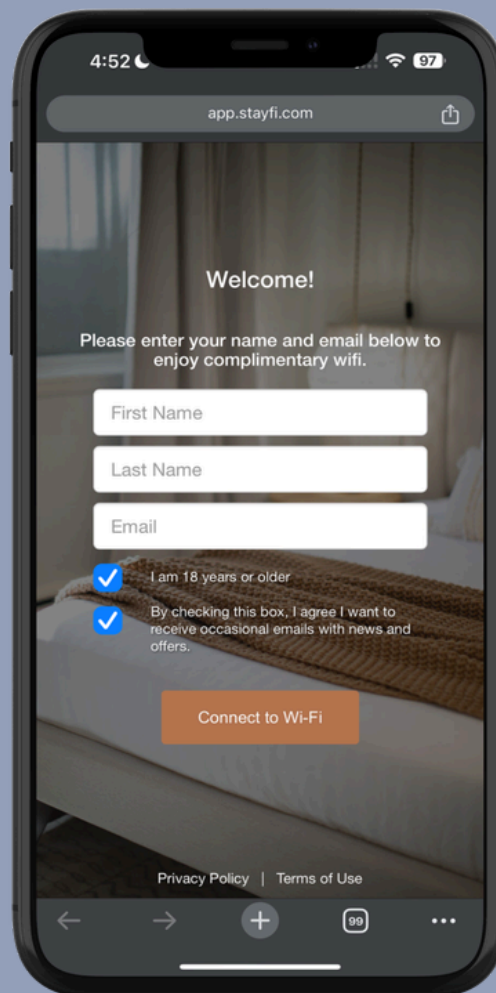
CHECK OUT IS PRIOR TO 11AM.

WE REQUEST A FEW THINGS OF YOU TO HELP US:

- LEAVE DIRTY TOWELS IN THE SHOWER OR TUB
- EMPTY THE REFRIGERATOR OF FOOD AND PUT ITEMS IN THE TRASH
- LOAD AND START DISHWASHER
- TURN OFF ALL LIGHTS
- ENSURE FRONT AND BACK DOORS ARE LOCKED



# Internet



FIND 'THE WORKS BNB GUEST' WIFI  
NETWORK AND FOLLOW THE ON SCREEN  
PROMPTS ON THE LOGIN PAGE (PICTURED)  
- NO WIFI PASSWORD NEEDED

# Welcome

WELCOME TO THE BLUE BUNGALOW – YOUR COZY HOME BASE IN THE HEART OF THE TWIN CITIES.

TUCKED INTO A VIBRANT AND CULTURALLY RICH NEIGHBORHOOD, OUR BUNGALOW OFFERS THE PERFECT BLEND OF COMFORT AND CONVENIENCE. LOCATED HALFWAY BETWEEN ST. PAUL AND MINNEAPOLIS, YOU'RE JUST MINUTES FROM EVERYDAY ESSENTIALS, INCREDIBLE DINING, AND LOCAL ATTRACTIONS—INCLUDING A SHORT STROLL TO ALLIANZ FIELD, HOME OF THE MINNESOTA UNITED.

MIDWAY IS A NEIGHBORHOOD FULL OF HEART—WHERE DIVERSE CULTURES COME TOGETHER TO CREATE SOMETHING TRULY SPECIAL. JUST DOWN THE STREET, UNIVERSITY AVENUE BUZZES WITH GLOBAL FLAVORS, FROM VIETNAMESE PHO AND ETHIOPIAN INJERA TO FRESH PAN DULCE FROM MEXICAN BAKERIES AND AUTHENTIC HMONG MARKETS. AND OF COURSE, YOU ARE ONLY A SHORT DRIVE TO ST PAUL, WHERE YOU WILL FIND GREAT RESTAURANTS AND THE AMAZING XCEL ARENA.

WE'RE SO HAPPY TO HOST YOU. IF YOU NEED ANYTHING AT ALL DURING YOUR STAY, JUST REACH OUT - WE'RE HERE TO HELP MAKE YOUR TRIP UNFORGETTABLE.

WE HOPE YOU LOVE IT AS MUCH AS WE DO.

## Contact Us



**763-600-7279**



**contact@theworksbnb.com**

## Cooling & Heat

THE BASEMENT AND MAIN FLOOR HAVE CENTRAL HVAC. THE THERMOSTAT IS IN THE HALLWAY ON THE MAIN FLOOR.

THE TOP FLOOR HAS A BASEBOARD HEATER AND WINDOW AC WITH THEIR RESPECTIVE CONTROLS.

## Laundry

THE HOUSE HAS A LARGE WASHER AND DRYER IN THE BASEMENT SERVICES AREA - THE STAIRS TO THE BASEMENT ARE BEHIND THE KITCHEN.

## Fireplace

THE FIREPLACE IS DECORATIVE ONLY, AND CANNOT BE USED.

## Device Charging

THERE IS A CHARGE DOCK IN EACH BEDROOM. BRING YOUR OWN CABLE.

## Trash

THE KITCHEN AND EACH BATHROOM HAVE TRASH CANS.

THE MAIN TRASH CANS ARE BY THE GARAGE AT THE REAR OF THE PROPERTY - THE CITY EMPTIES THE TRASH WEEKLY FROM THIS LOCATION.

- BLACK IS TRASH
- BLUE IS RECYCLING

PLEASE ENSURE NO PLASTIC BAGS ARE PUT IN THE RECYCLING, THESE BAGS MUST GO IN THE MAIN TRASH

## Fire Pit

THERE IS A WOOD BURNING FIRE PIT IN THE BACK YARD WITH SEATING FOR 8. FIRE WOOD, FIRE LIGHTERS AND LIGHTERS ARE KEPT IN THE GARAGE.

## Snow Day

SNOW CLEARING IS AUTOMATICALLY ASSIGNED AT 2". A SNOW SHOVEL IS IN THE GARAGE.

## Safety

- THERE ARE SMOKE / CARBON MONOXIDE DETECTORS THROUGHOUT THE HOUSE
- THERE ARE SECURITY CAMERAS OUTSIDE THE ENTRANCE DOORS
- THE EXTERIOR DOORS (AT THE FRONT AND SIDE) DO NOT AUTOMATICALLY LOCK - PRESS THE YALE BUTTON ON THE RESPECTIVE LOCK TO LOCK THEM
- NEVER LEAVE THE FIRE PIT UNATTENDED WHILE LIT
- IF THERE IS A POWER ISSUE, THE BREAKER PANEL IS IN THE BASEMENT BEDROOM (CUPBOARD BY THE WINDOW)

# General Info

## Supplies

SO YOU'RE READY TO GO ON DAY ONE, THE FOLLOWING ARE ALREADY INCLUDED:

- TOILETRIES
- TOWELS
- HAIRDRYERS
- COFFEE, TEAS & CREAMERS
- SALT & PEPPER
- OIL
- SUGAR & SWEETENER
- HAND SOAP
- DISHWASHER TABLETS & DISH SOAP
- LAUNDRY DETERGENT
- BED LINENS & PILLOWS
- VACUUM, DUST PAN & BRUSH, MOP, CLEANING PRODUCTS

NOTE: REPLENISHMENT OF SUPPLIES ARE NOT PROVIDED. HOUSEKEEPING IS AVAILABLE AT AN ADDITIONAL COST AND DEPENDING ON AVAILABILITY.

## For Your Kids

WE'VE PROVIDED SOME ESSENTIALS SO YOU CAN FEEL SAFE AND TRAVEL LIGHT. THEY ARE STORED IN THE ENTRANCE HALLWAY CLOSET.

- CHILD PROOFING KIT
- PACK & PLAY
- HIGH CHAIR
- KIDS DINNERWARE (KITCHEN)

## Games & Books

THERE ARE A SELECTION OF GAMES AND BOOKS LOCATED IN THE BASEMENT TV CABINET.

# Kitchen & Supplies

THE BRAND NEW CUSTOM KITCHEN HAS PLENTY OF MODERN EQUIPMENT AND QUALITY KITCHEN ESSENTIALS FOR YOU TO COOK UP A STORM:

- FULL SIZE FRIDGE / FREEZER WITH BUILT IN ICE MAKER (IN THE FREEZER), AND WATER DISPENSER (LEFT SIDE OF THE FRIDGE - PRESS THE BLACK BUTTON TO DISPENSE WATER)
- GAS RANGE
- MICROWAVE
- DISHWASHER
- KEURIG DUO COFFEE MACHINE (SO YOU CAN USE FILTER COFFEE IN THE CARAFE, OR SINGLE CUP K-CUPS)
- FRENCH PRESS
- TOASTER
- ELECTRIC KETTLE
- BLENDER
- POTS, PANS AND DISHES
- GLASSES
- MUGS AND WINE GLASSES
- SILVERWARE
- COFFEE AND TEAS
- SUGAR AND SWEETENER
- SALT AND PEPPER
- OLIVE OIL
- CREAMERS



# House Rules

## Noise Levels

QUIET HOURS ARE 10PM TO 8AM DAILY. IF A NOISE COMPLAINT IS RECEIVED, YOU MAY BE ASKED TO VACATE THE PROPERTY WITH NO REFUNDS.

AT ALL TIMES PLEASE BE RESPECTFUL OF OUR NEIGHBORS AS MANY CHILDREN AND ELDERLY LIVE NEARBY - ESPECIALLY IF RETURNING TO THE PROPERTY LATE.

## No Pets

PETS ARE NOT ALLOWED AT THE PROPERTY.

## No Smoking

THERE IS NO SMOKING INSIDE THE PROPERTY.

## No Parties

WE DON'T ALLOW PARTIES TO BE HELD AT THE PROPERTY OUT OF RESPECT FOR THE NEIGHBORS AND THE ADDITIONAL WEAR AND TEAR ON THE PROPERTY.

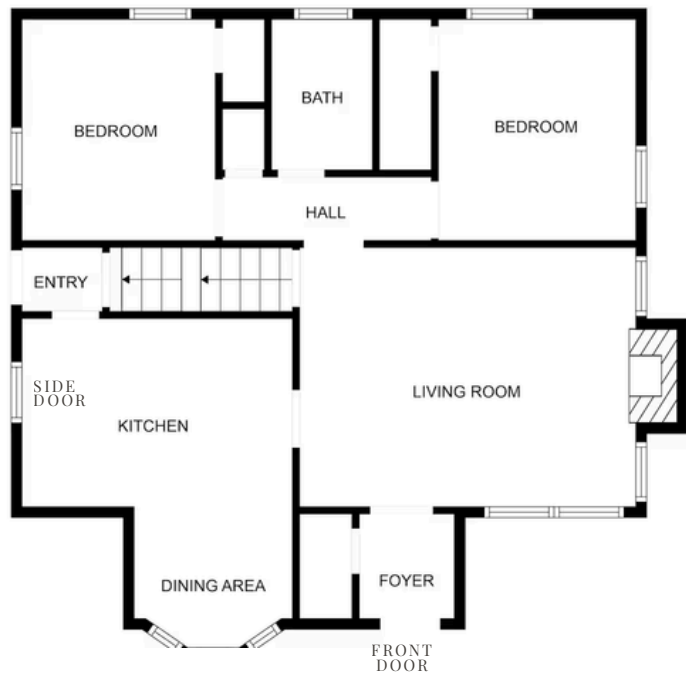
WE USE SECURITY CAMERAS OUTSIDE TO MONITOR ACCESS TO AND FROM THE PROPERTY, AND IF EVIDENCE OF ANY OF THE ABOVE IS FOUND, YOU WILL BE CHARGED A FEE OF \$250 AND MAY BE ASKED TO VACATE THE PROPERTY WITH NO REFUNDS.

# Floor Plan

Top Floor



Main Floor  
(Ground Level)



Lower Level



# Getting Around



**BUS STOP** - MINNEHAHA AVE & VICTORIA ST / DALE ST & UNIVERSITY AVE / LEXINGTON PKWY & UNIVERSITY AVE. THESE STOPS ARE SERVED BY BUSES ON ROUTES 21, 67, 83, AND 65, AS WELL AS THE METRO GREEN LINE LIGHT RAIL.



**GAS STATION - HOLIDAY**

600 SNELLING AVE N, ST PAUL, MN 55104  
3 MINS (0.4 MILES)



**EV CHARGING - TARGET**

1300 UNIVERSITY AVE W, ST PAUL, MN 55104  
5 MINS (0.9 MILES)



**RIDE-HAILING:**

SERVICES LIKE UBER AND LYFT ARE TYPICALLY AVAILABLE.

# St. Paul



## **CAN CAN WONDERLAND (1.2 MILES)**

THIS CONVERTED FACTORY IS NOW A VIBRANT, ARTIST-DESIGNED 18-HOLE MINI GOLF VENUE WITH VINTAGE ARCADE GAMES, THEMED COCKTAILS AND A CAFÉ — EQUALLY FUN FOR FAMILIES, GROUPS, OR DATE NIGHTS.



## **COMO PARK ZOO & CONSERVATORY (2.6 MILES)**

THIS EXPANSIVE PARK INCLUDES A FREE (DONATION-BASED) ZOO, BOTANICAL CONSERVATORY, CAROUSEL RIDES, PADDLE BOATS, MINIATURE GOLF (COMO TOWN), WALKING TRAILS, AND PICNIC AREAS. IDEAL FOR OUTDOORSY OR BUDGET-FRIENDLY DAYS.



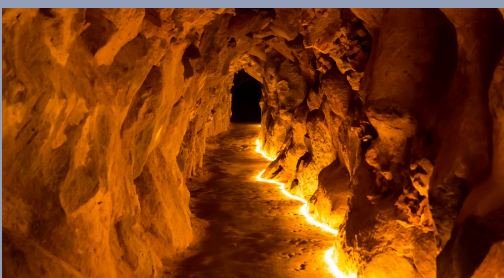
## **ALLIANZ FIELD (0.4 MILES)**

SOCCER STADIUM A SHORT WALK FROM THE BLUE BUNGALOW, HOME TO MINNESOTA UNITED OF MLS. OPENED IN 2019, THE 19,400-SEAT STADIUM IS A VIBRANT HUB FOR THOSE WANTING TO EXPERIENCE THE JOYS OF A SOCCER GAME.



## **GRAND CASINO ENERGY CENTER (4.5 MILES)**

PREVIOUSLY KNOWN AS XCEL ENERGY CENTER - THE HOME OF MINNESOTA HOCKEY'S WILD AND FROST TEAMS, THIS MULTI PURPOSE VENUE ALSO HOSTS SOME OF THE WORLDS BEST ARTISTS, ALL JUST A SHORT DRIVE AWAY.



## **WABASHA STREET CAVES (5.1 MILES)**

BANQUET, CONVENTION & EVENT SPACE SET IN A SPRAWLING, SUBTERRANEAN CAVE NETWORK, WITH GUIDED TOURS.

# Minneapolis



## **MINNEAPOLIS INSTITUTE OF ART**

WORLD-RENOWNED ART MUSEUM IS LOCATED JUST A FEW BLOCKS AWAY, FEATURING AN EXTENSIVE COLLECTION OF ART FROM AROUND THE WORLD.



## **LORING PARK**

THIS BEAUTIFUL PARK IS LOCATED JUST A FEW BLOCKS NORTH OF BLAISDELL AVE, AND FEATURES WALKING PATHS, GARDENS, A POND, AND OUTDOOR ART INSTALLATIONS.



## **WALKER ART CENTER**

THIS CONTEMPORARY ART MUSEUM IS LOCATED A SHORT DRIVE AWAY FROM BLAISDELL AVE AND FEATURES A WIDE RANGE OF EXHIBITS, EVENTS, AND FILM SCREENINGS.



## **MINNEAPOLIS SCULPTURE GARDEN**

OUTDOOR PARK LOCATED NEAR WALKER ART CENTER, FEATURES A COLLECTION OF LARGE SCULPTURES BY RENOWNED ARTISTS (INCLUDING THE FAMOUS "SPOONBRIDGE & CHERRY", AND THE HAHN/COCK BLUE ROOSTER).



## **CHAIN OF LAKES**

A GROUP OF LAKES IN THE HEART OF MINNEAPOLIS, INCLUDING LAKE HARRIET, BDE MAKA SKA, AND LAKE OF THE ISLES. ENJOY A VARIETY OF ACTIVITIES LIKE SWIMMING, BOATING, FISHING, AND BIKING OR WALKING ALONG SCENIC TRAILS THAT WIND AROUND THE LAKES.

# Eating & Drinking

## **DILLA SPORTS BAR AND ETHIOPIAN RESTAURANT**

**1625 UNIVERSITY AVE W, ST PAUL  
(0.1 MILES AWAY)**

DILLA SPORTS BAR & RESTAURANT BRINGS THE BOLD FLAVORS OF AUTHENTIC ETHIOPIAN CUISINE TO SAINT PAUL IN A LIVELY, WELCOMING SPORTS BAR SETTING, CONTINUING THE FAMILY-OWNED LEGACY THAT BEGAN IN MINNEAPOLIS.

## **SNELLING CAFE**

**638 SNELLING AVE N, ST PAUL  
(0.4 MILES AWAY)**

SNELLING CAFE OFFERS A WARM, WELCOMING SPACE WHERE THE RICH CULINARY TRADITIONS OF ERITREA, ETHIOPIA, SUDAN, AND AMERICA COME TOGETHER IN A FLAVORFUL FUSION OF CULTURE, HOSPITALITY, AND AUTHENTIC CUISINE.

## **SOLE CAFE**

**684 SNELLING AVE N, ST PAUL  
(0.5 MILES AWAY)**

THIS COZY & CASUAL KOREAN CAFE USES THOUGHTFULLY-SOURCED INGREDIENTS & OFFERS KARAOKE SOME NIGHTS.

## **BLACK SEA**

**737 SNELLING AVE N, ST. PAUL  
(0.6 MILES AWAY)**

NO-FRILLS FIXTURE DOLES OUT AN ARRAY OF TURKISH COMFORT DISHES AT THE COUNTER IN A SNUG DINING ROOM.

## **LOCAL RUMOR**

**1811 SELBY AVE, ST PAUL  
(1.1 MILES AWAY)**

A COZY, INVITING RESTAURANT AND LOUNGE SITUATED IN SAINT PAUL'S MERRIAM PARK NEIGHBORHOOD ALONG SELBY AVENUE.

## **BLACKSTACK BREWING**

**755 PRIOR AVE N, ST PAUL  
(1.2 MILES AWAY)**

FAMILY-RUN CRAFT TAPROOM & EVENTS VENUE POURING STOUTS, LAGERS & IPAS & GRUB FROM FOOD TRUCKS.

## **LAKE MONSTER BREWING COMPANY**

**550 VANDALIA ST #160, ST. PAUL  
(1.2 MILES AWAY)**

UNIQUE VERSIONS OF CLASSIC BEER STYLES, RANGING FROM ESOTERIC TO APPROACHABLE, SUBTLE TO OVER-THE-TOP, THEIR BEERS ADHERE TO THE PHILOSOPHY THAT THERE IS ALWAYS MORE TO BE DISCOVERED.

## **PIZZA LUCÉ ST PAUL**

**1183 SELBY AVE, ST. PAUL  
(1.7 MILES AWAY)**

LOCAL PIZZERIA CHAIN SERVING CREATIVE PIES, PASTA & HOAGIES, PLUS BEER & WINE, IN A CASUAL SETTING.

# Local Food Stores

## **ADDIS MARKET**

3815 SUNNYSIDE AVE (0.6 MILES)

LOCAL GROCERY SERVING EAST AFRICAN COMMUNITIES.

## **CUB FOODS MIDWAY**

1440 UNIVERSITY AVE W (0.7 MILES)

LARGE GROCERY STORE OFFERING FRESH PRODUCE, TINNED GOODS, AND QUALITY DELI ITEMS.

## **TARGET**

1300 UNIVERSITY AVE W (0.9 MILES)

LARGE SUPERSTORE INCLUDING A CVS AND STARBUCKS

## **ALDI**

1134 UNIVERSITY AVE W, ST PAUL (1.2 MILES)

MID SIZE GROCERY CHAIN FEATURING A RANGE OF LOW COST ITEMS.





# THE WORKS BNB

[WWW.THEWORKSBNB.COM](http://WWW.THEWORKSBNB.COM)

FOLLOW US @BRITFLIPPER

