

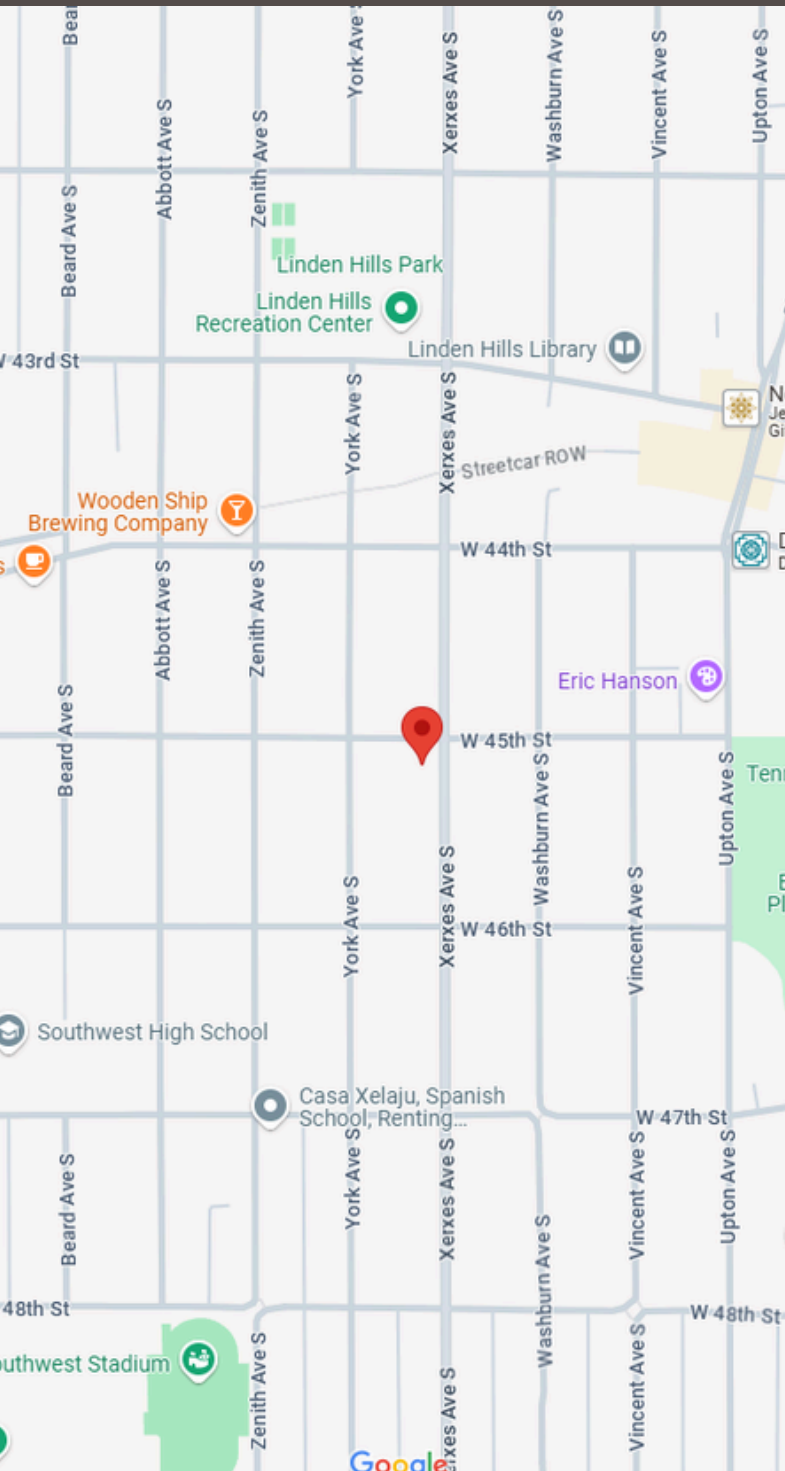


# The 1910

LINDEN HILLS, MN



# Arrival



## ADDRESS

4504 Xerxes Ave S, Minneapolis, 55410



## PARKING

The private driveway comfortably fits 4 vehicles in a single file pattern.

There is street parking outside the property on a first-come basis. Please do not park on the grass at the front or back of the property.

The garage is available for use for storing items / single car parking - the code will be sent with your home access code.



## EMERGENCY

Methodist Hospital  
6500 Excelsior Blvd, St Louis Park  
952-993-5000  
(3.0 miles drive / 10mins drive)

# Check In

CHECK IN ANY TIME AFTER 4PM.

WE WILL SEND YOU THE ACCESS CODE TO THE FRONT DOOR AT AROUND 9AM ON THE DAY OF YOUR ARRIVAL.

KEY IN YOUR CODE ON THE SCHLAGE SMART LOCK AND THE DOOR SHOULD OPEN.

# Check Out

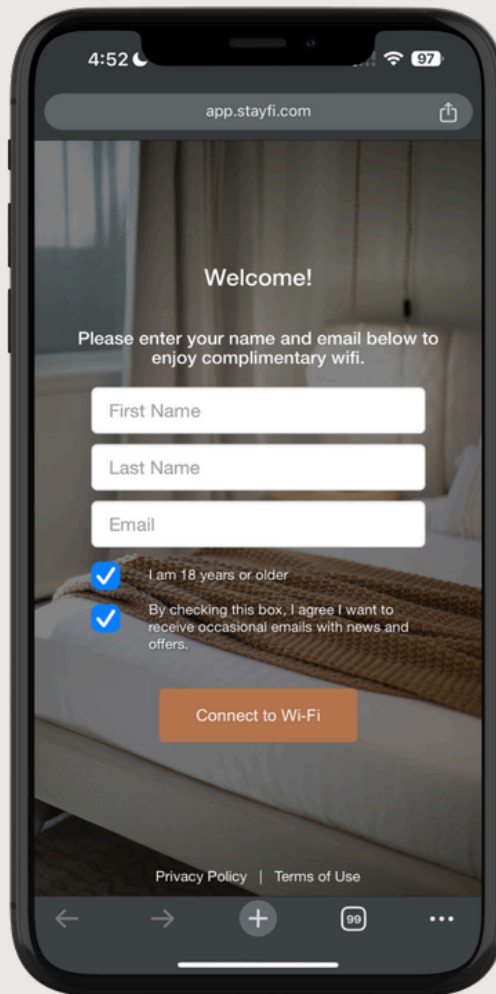
CHECK OUT IS PRIOR TO 11AM.

WE REQUEST A FEW THINGS OF YOU TO HELP US:

- LEAVE DIRTY TOWELS IN THE SHOWERS
- EMPTY THE REFRIGERATOR OF FOOD AND PUT ITEMS IN THE TRASH
- IF YOU HAVE ADJUSTED THE HVAC SIGNIFICANTLY, PLEASE REVERT IT TO 68F
- LOAD AND START DISHWASHER
- TURN OFF ALL LIGHTS
- ENSURE FRONT AND BACK DOORS ARE LOCKED



# Internet



FIND 'THE WORKS BNB GUEST' NETWORK AND FOLLOW THE ON SCREEN PROMPTS ON THE LOGIN PAGE (PICTURED) TO LOGIN. NO PASSWORD NEEDED!

# Welcome

WELCOME TO "THE 1910" IN LINDEN HILLS, JUST BLOCKS FROM LAKE HARRIET WITH CYCLING, WALKING TRAILS, BEACHES AND WATERFRONT PARKS, AS WELL AS THE HISTORIC COMO-HARRIET STREETCAR LINE. JUST A SHORT WALK TO SEVERAL SHOPPING AREAS WHERE YOU WILL FIND CAFES, RESTAURANTS, AND UPSCALE EATERIES, ALONG WITH SPECIALTY SHOPS.


NAMED AFTER THE YEAR THE HOME WAS BUILT, THE 1910 WAS PAINSTAKINGLY RENOVATED IN 2024, ADDING MODERN TOUCHES AND AMENITIES WE KNOW YOU WILL LOVE WHILE KEEPING ITS HISTORIC BEAUTY.

RELAX IN THOUGHTFULLY DECORATED BEDROOMS, ENJOY THE WARMTH OF OUR COZY LIVING SPACES, GET ENGROSSED IN THE MATCH IN THE THEATRE ROOM, RELAX IN THE READING AREA, WHIP UP A MEAL IN THE FULLY EQUIPPED KITCHEN, OR UNWINDING IN THE PRIVATE BACKYARD WITH A BBQ - EVERY DETAIL IS TAILORED TO ENHANCE YOUR STAY.

WE'RE THRILLED TO WELCOME YOU AND HOPE YOU ENJOY EVERY MOMENT HERE.

IF THERE'S ANYTHING YOU NEED TO MAKE YOUR STAY EVEN BETTER, PLEASE DON'T HESITATE TO REACH OUT. GET READY TO RELAX, EXPLORE, AND ENJOY EVERYTHING MINNEAPOLIS HAS TO OFFER!

Contact Us

 763-600-7279

 [CONTACT@THEWORKSBNB.COM](mailto:CONTACT@THEWORKSBNB.COM)

## Cooling & Heat

THE HOUSE HAS CENTRAL HVAC. THE NEST THERMOSTAT IS ON THE ENTRYWAY WALL UNDER THE STAIRS - TURN THE DIAL TO SET THE DESIRED TEMPERATURE.

## Laundry

THE HOUSE HAS A WASHER AND DRYER IN THE KITCHEN AREA (BEHIND THE BARN DOORS). KEEP THE LAUNDRY BARN DOORS CLOSED WHEN NOT USING THE LAUNDRY.

## Charging

THERE IS A CHARGE DOCK IN EACH BEDROOM, AND USB OUTLETS THROUGHOUT THE HOUSE.

IF THE MOTION ACTIVATED LIGHTS IN THE BEDROOM CLOSETS DO NOT WORK (NORMAL SETTING IS AUTO), PULL THEM OFF THEIR MAGNET HOLDER, AND CHARGE USING THE USB-C CABLE IN THE LEFT DRAW UNDER THE TV - THERE IS A USB OUTLET BY THE KITCHEN RANGE.

## Trash

THE KITCHEN HAS 2 CANS. EACH BATHROOM HAS A TRASH BIN.

THE MAIN TRASH IS BY THE SIDE OF THE DRIVEWAY (ONLY TRASH IS AVAILABLE). WE HAVE A SERVICE THAT TAKES OUT THE TRASH CAN ON SUNDAY, AND BRINGS THE CANS BACK ON MONDAY - THEY WILL TYPICALLY TAKE A PHOTO OF THE CANS.

## Grill & Fire Table

THERE IS A CHARCOAL GRILL IN THE BACK YARD - CHARCOAL IS NOT PROVIDED.

THERE IS A PROPANE FIRE TABLE. TO LIGHT THIS:

- PUSH THE DIAL AND TURN TO LOW (9PM POSITION), THEN WHILE CONTINUING TO PUSH THE DIAL IN, PRESS THE IGNITE BUTTON.
- ONCE THE GAS IS LIT, TURN THE DIAL TO DESIRED HEAT THEN RELEASE THE DIAL

## Safety

- THERE ARE SMOKE / CARBON MONOXIDE DETECTORS THROUGHOUT THE HOUSE
- THERE IS A SECURITY CAMERAS OUTSIDE THE MAIN ENTRANCE DOOR
- FRONT AND BACK DOORS DO NOT AUTOMATICALLY LOCK
  - LOCK THE FRONT DOOR USING THE YALE BUTTON OR INTERNAL LOCK KNOB
  - YOU CAN ONLY LOCK THE BACK (PATIO) DOOR FROM INSIDE USING THE LEVER
- LAVA ROCKS (IN THE FIRE PIT) IF HEATED QUICKLY AND DAMP MAY EXPLODE - USE THE LOW SETTING ON THE FIRE TABLE INITIALLY, AND BE CAUTIOUS AROUND THE FIRE TABLE AT ALL TIMES
- PLEASE USE THE FIRE TABLE COVER WHEN ITS NOT IN USE - ONLY PUT THE COVER ON ONCE THE ROCKS ARE COOL TO AVOID DAMAGE TO THE COVER / FIRE TABLE

# General Info

## Essential Supplies

SO YOU'RE READY TO GO ON DAY ONE, THE FOLLOWING ARE ALREADY INCLUDED:

- TOILETRIES
- TOWELS
- HAIRDRYER
- COFFEE, TEAS & CREAMERS
- SALT & PEPPER
- OIL
- SUGAR & SWEETENER
- HAND SOAP
- DISHWASHER TABLETS & DISH SOAP
- LAUNDRY DETERGENT
- BED LINENS & PILLOWS
- VACUUM, DUST PAN & BRUSH, MOP, CLEANING PRODUCTS

NOTE: REPLENISHMENT OF SUPPLIES ARE NOT PROVIDED. HOUSEKEEPING IS AVAILABLE AT AN ADDITIONAL COST AND DEPENDING ON AVAILABILITY.

## For your Kids

WE'VE PROVIDED SOME ESSENTIALS SO YOU CAN FEEL SAFE AND TRAVEL LIGHT. THE FOLLOWING IS AVAILABLE IN THE DRAWER IN THE CINEMA ROOM:

- MONITOR
- CHILD PROOFING KIT
- WHITE NOISE MACHINE / NIGHT LIGHT
- KIDS GAMES AND BOOKS (LIVING ROOM)
- PACK & PLAY (CLEANING CLOSET)
- HIGH CHAIR (CLEANING CLOSET)
- KIDS DINNERWARE (KITCHEN)

## Games & Books

THERE ARE A SELECTION OF GAMES AND BOOKS LOCATED IN THE DRAWERS IN THE CABINET IN THE LIVING ROOM.

THERE ARE ALSO MORE BOOKS IN THE PORCH AT THE FRONT OF THE PROPERTY.

# Cinema Room

## Television

DRAW THE BLACKOUT CURTAINS AND BLINDS, MAKE SOME POPCORN AND ENJOY THE 85" SMART TV & SOUND BAR.

THE TV HAS FREE-TO-AIR STREAMING CHANNELS AND MANY SMART APPS INSTALLED ON THE GOOGLE TV SYSTEM - LOG INTO AN APP YOURSELF TO USE THESE APPS (AND LOG OUT OF THEM BEFORE YOU DEPART).

THE SOUNDBAR AUTOMATICALLY TURNS ON AND OFF VIA THE TV - VOLUME CONTROLLED BY THE TV REMOTE (NO SEPERATE REMOTE).

## Wall Lights

THE WALL LIGHTS ARE BATTERY POWERED AND CONTROLLED BY THE REMOTE NEXT TO THE LIGHT SWITCH (NEAR THE GUMBALL MACHINE).

IF THE LIGHTS DO NOT WORK, YOU CAN CHARGE THEM BY UNSCREWING THEM FROM THE SCONCE, AND CHARGE VIA THE CABLE IN THE LEFT DRAW BELOW THE TV - THERE IS A USB OUTLET BY THE KITCHEN RANGE.



# Cinema Room



## Popcorn Machine

INSTRUCTIONS CAN BE FOUND IN THE MACHINE'S STORAGE COMPARTMENT. HERE'S A QUICK GUIDE:

1. TURN ON THE MACHINE AT THE TOP TO PRE-HEAT FOR 5-10 MINUTES (MAKE SURE THE KETTLE IS PLUGGED INTO THE POWER).
2. TURN OFF THE MACHINE AFTER PRE-HEATING.
3. ADD 3 SPOONS OF OIL TO THE KETTLE (USE THE PLASTIC MEASURING SPOON INSIDE THE STORAGE COMPARTMENT.)
4. ADD 1 SCOOP OF POPCORN KERNELS TO THE KETTLE. (USE THE PLASTIC MEASURING SCOOP INSIDE THE STORAGE COMPARTMENT.)
5. TURN THE MACHINE BACK ON VIA THE TOP SWITCH. WAIT FOR YOUR POPCORN TO POP, THEN SCOOP, AND ADD YOUR FLAVOR.

NOTE: POPCORN IS UNSUITABLE FOR KIDS UNDER 3 AS IT MAY POSE A CHOKING HAZARD.

# Cinema Room



## Gumball Machine

JUST INSERT ANY COIN AND TWIST.

PLEASE NOTE: GUMBALLS ARE UNSUITABLE FOR KIDS UNDER 5 AS THEY MAY POSE A CHOKING HAZARD.

## Kids Comfort

THERE'S A KIT IN THE DRAWER IN THE TV CABINET, WITH WHITE NOISE MACHINE / NIGHT LIGHT, SAFETY KIT AND BABY MONITOR.

# Cinema Room



## Sofa-beds

THE SOFA HAS THE ABILITY TO CONVERT TO 2 FULL SIZED SOFA-BEDS FOR LARGER GROUPS. THE BED LINENS ARE STORED IN THE CLEANING CLOSET.

TO OPEN THE SOFA-BEDS, REMOVE THE CUSHIONS, PULL THE HANDLE UP AND TOWARDS YOU.



PULL THE LEG TOWARDS YOU AND FOLD OUT.



# Kitchen & Supplies

THE BRAND NEW CUSTOM KITCHEN IS EQUIPPED AND STOCKED WITH PLENTY OF MODERN EQUIPMENT AND QUALITY KITCHEN ESSENTIALS FOR YOU TO COOK UP A STORM.

- FRIDGE / FREEZER
- ELECTRIC OVEN & MICROWAVE
- ELECTRIC STOVETOP WITH 5 HOBS
- DISHWASHER
- DRIP COFFEE MACHINE
- KEURIG COFFEE MACHINE
- FRENCH PRESS
- TOASTER
- ELECTRIC KETTLE
- BLENDER
- WAFFLE MAKER
- SLOW COOKER
- POTS, PANS AND DISHES
- GLASSES
- MUGS AND WINE GLASSES
- SILVERWARE
- COFFEE AND TEAS
- SUGAR AND SWEETENER
- OLIVE OIL
- CREAMERS



# House Rules

## Quiet Hours

QUIET HOURS ARE 10PM TO 8AM DAILY, THIS PARTICULARLY APPLIES OUTSIDE. IF A NOISE COMPLAINT IS RECEIVED, YOU MAY BE ASKED TO VACATE THE PROPERTY WITH NO REFUNDS.

AT ALL TIMES PLEASE BE RESPECTFUL OF OUR NEIGHBOURS AS MANY CHILDREN AND ELDERLY LIVE NEARBY - ESPECIALLY IF RETURNING TO THE PROPERTY LATE.

## Pets

PETS ARE ONLY ALLOWED AT THE PROPERTY OWNERS DISCRETION. IF PERMISSION HAS BEEN GIVEN, A PET FEE IS CHARGED TO COVER EXTRA CLEANING. PETS SHOULD BE KEPT OFF OF FURNITURE TO AVOID DAMAGE.

## No Parties

WE DON'T ALLOW PARTIES TO BE HELD AT THE PROPERTY OUT OF RESPECT FOR THE NEIGHBORS AND THE ADDITIONAL WEAR AND TEAR ON THE PROPERTY.

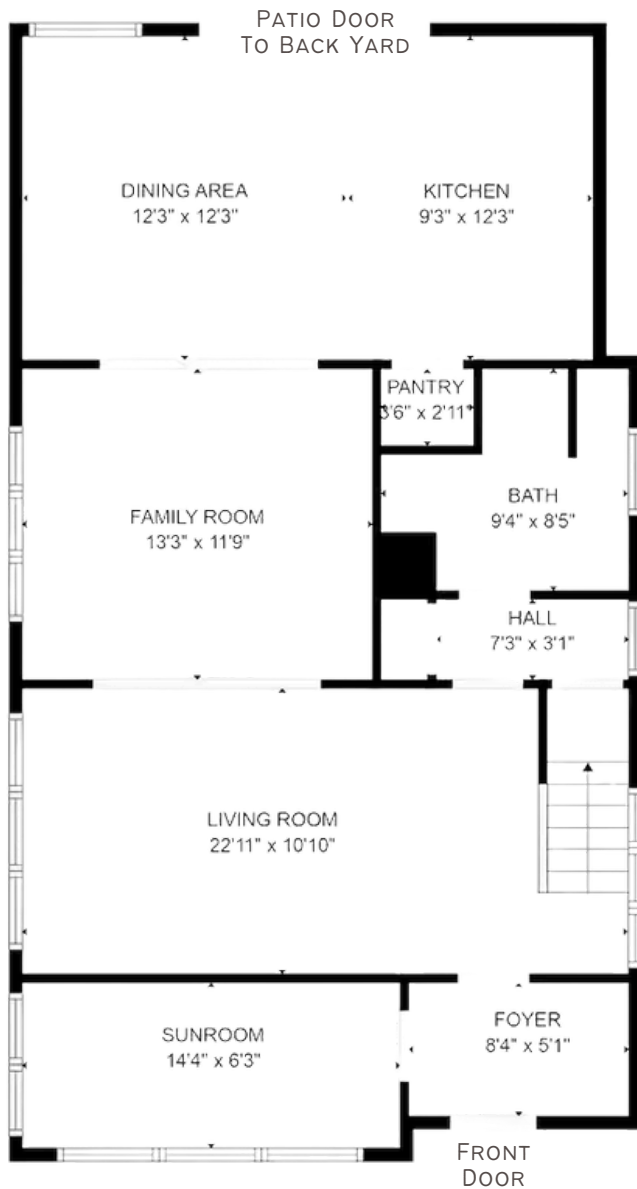
WE USE SECURITY CAMERAS OUTSIDE TO MONITOR ACCESS TO AND FROM THE PROPERTY, AND IF EVIDENCE OF ANY OF THE ABOVE IS FOUND, YOU WILL BE CHARGED A FEE OF \$250 AND MAY BE ASKED TO VACATE THE PROPERTY WITH NO REFUNDS.

## No Smoking

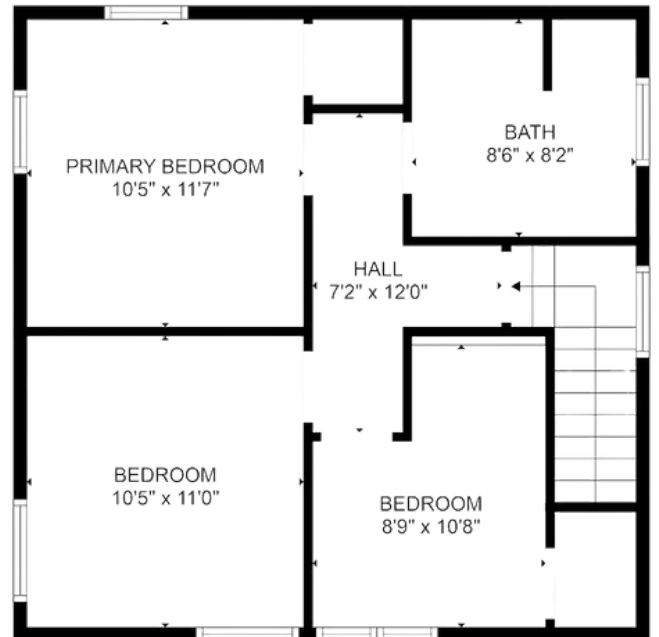
THERE IS NO SMOKING INSIDE THE PROPERTY. YOU MAY SMOKE OUTSIDE THE FRONT OR BACK OF THE PROPERTY. PLEASE DISPOSE OF CIGARETTE BUTTS.

# Floor Plans

## GROUND FLOOR



## UPPER FLOOR



# Getting Around



**BUS STOP** - THE NEAREST BUS STOP IS THE STOP AT XERXES AVE S & 45TH ST W - JUST 1 MINUTE WALK FROM THE PROPERTY.



**BIKE RENTALS** - TANGLETOWN BIKE SHOP:  
816 W 50TH ST, MINNEAPOLIS, MN (1.9 MILES AWAY)  
651-209-6046



**GAS STATION** - SPEEDWAY:  
4419 FRANCE AVE S, MINNEAPOLIS, MN (0.6 MILES)  
612-922-5459



**EV CHARGING** - VARIOUS:  
THE PARKING LOT IN EDINA (BY LUNDS) HAS EV CHARGEPOINT CHARGERS. MOST LARGER TARGETS HAVE SUPERCHARGERS.



**RIDE-HAILING**: SERVICES LIKE UBER AND LYFT ARE AVAILABLE IN MINNEAPOLIS.

# Places To See



## LAKE HARRIET BANDSHELL PARK

LAKE HARRIET BANDSHELL PARK IN MINNEAPOLIS OFFERS SCENIC LAKE VIEWS, A HISTORIC BANDSHELL WITH FREE CONCERTS, A SWIMMING BEACH, TRAILS, AND A PLAYGROUND, MAKING IT A PERFECT SPOT FOR OUTDOOR RELAXATION AND ENTERTAINMENT.



## MINNEHAHA FALLS

A STUNNING 53-FOOT WATERFALL NESTLED IN A BEAUTIFUL PARK WITH TRAILS, PICNIC SPOTS, AND SCENIC VIEWS. THIS NATURAL GEM IS A POPULAR SPOT FOR VISITORS YEAR-ROUND, OFFERING PICTURESQUE LANDSCAPES AND TRANQUIL SURROUNDINGS.



## BOOM ISLAND PARK

RIVERSIDE PARK OFFERING STUNNING VIEWS OF THE DOWNTOWN SKYLINE, WALKING TRAILS, PICNIC AREAS, AND A HISTORIC LIGHTHOUSE. LOCATED ALONG THE MISSISSIPPI RIVER, IT'S A POPULAR SPOT FOR OUTDOOR ACTIVITIES, INCLUDING BIKING, KAYAKING, AND PHOTOGRAPHY. BOOM ISLAND PARK PROVIDES A PERFECT URBAN ESCAPE FOR RELAXATION AND RECREATION.



# Outdoor Fun

## BIKING & HIKING IN LINDEN HILLS

THERE ARE MANY GREAT AREAS NEARBY:

- LAKE HARRIET - 0.5 MILES AWAY
- MINNEHAHA CREEK WEST PARK - 1.6 MILES AWAY
- EDINA PROMENADE - 3.5 MILES AWAY
- SW THEO. WIRTH SOUTH TRAILHEAD - 4 MILES AWAY
- BROWNIE LAKE MT. BIKE TRAILS - 4.1 MILES AWAY

---

## ICE CREAM

ONE OF MINNESOTA'S BEST ICE CREAM PARLORS IS JUST A SHORT WALK AWAY. WITH A GREAT SELECTION OF ICE-CREAMS AND BEVERAGES, AND SEATING INSIDE AND OUT, IT'S SURE TO BE A FAMILY FAVORITE.

SEBASTIAN JOE'S ICE CREAM SHOP  
4321 UPTON AVE S (8 MINS WALK / 0.4 MILES AWAY)  
612-926-7916 / [SEBASTIANJOESICECREAM.COM](http://SEBASTIANJOESICECREAM.COM)

---

## BEER GARDEN

IF DRINKING IS MORE OF YOUR IDEA OF OUTDOOR FUN, THE NEAREST BAR IS WOODEN SHIP, WITH A GREAT OUTDOOR PATIO AREA. THEY HAVE A WIDE SELECTION OF BEERS, SELTZERS AND BAR SNACKS.

WOODEN SHIP BREWING  
3300 W 44TH ST (5MINS WALK / 0.3 MILES AWAY)  
612-354-3300 / [WOODENSHIPBREWING.COM](http://WOODENSHIPBREWING.COM)

# Eating & Drinking

## **TURTLE BREAD**

### **3421 W 44TH ST (0.4 MILES AWAY)**

COZY BAKERY KNOWN FOR ITS FRESH, ARTISAN BREADS, PASTRIES, AND DELICIOUS BREAKFAST OPTIONS, ALL MADE WITH HIGH-QUALITY INGREDIENTS AND A FOCUS ON LOCAL FLAVORS.  
> OUR RECOMMENDATION: RUEBEN SANDWICH.  
THE TAKE-OUT BREAD IS ALSO GREAT.  
612-924-6013 / [TURTLEBREAD.COM](http://TURTLEBREAD.COM)

## **CAFE CERES**

### **3509 W 44TH ST (0.4 MILES AWAY)**

FRESHLY BREWED COFFEE, PASTRIES, AND LIGHT BITES—PERFECT FOR RELAXING OR MEETING UP WITH FRIENDS.  
612-345-4866 / [CAFECERESMPLS.COM](http://CAFECERESMPLS.COM)

## **TOSCA**

### **3415 W 44TH ST (0.4 MILES AWAY)**

ELEVATED ITALIAN CUISINE WITH A CONTEMPORARY TWIST, OFFERING HANDMADE PASTAS, WOOD-FIRED PIZZAS, AND AN EXTENSIVE WINE LIST IN A CHIC, INTIMATE SETTING.  
612-924-1900 / [TOSCAMPLS.COM](http://TOSCAMPLS.COM)

## **LE BURGER 4304**

### **4304 UPTON AVE S (0.4 MILES AWAY)**

GOURMET BURGERS WITH A CREATIVE TWIST, FEATURING HIGH-QUALITY INGREDIENTS AND FLAVORFUL TOPPINGS.  
612-328-9267 / [EBURGER4304.COM](http://EBURGER4304.COM)

## **TILIA**

### **2726 W 43RD ST (0.4 MILES AWAY)**

INVENTIVE, SEASONAL AMERICAN FARE IN A COZY, MODERN SETTING, WITH A FOCUS ON FRESH INGREDIENTS AND BOLD FLAVORS THAT CREATE A MEMORABLE DINING EXPERIENCE.  
612-354-2806 / [TILIAMPLS.COM](http://TILIAMPLS.COM)

## **PICNIC**

### **4307 UPTON AVE S (0.4 MILES AWAY)**

LOCALLY SOURCED FOOD IN A COZY, VIBRANT SETTING, A PERFECT SPOT FOR A QUICK BITE, A DRINK, OR A LEISURELY MEAL.  
> OUR RECOMMENDATION: HAZEL BASIL SANDWICH AND A PINT OF GUINNESS.  
952-926-1187 / [PICNICLINDENHILLS.COM](http://PICNICLINDENHILLS.COM)

## **MARTINA**

### **4312 UPTON AVE S (0.4 MILES AWAY)**

SAVOR MODERN ARGENTINIAN FLAVORS AND CRAFT COCKTAILS IN A CHIC, OPEN SPACE WITH A LIVELY AMBIANCE.  
612-922-9913 / [MARTINARESTAURANT.COM](http://MARTINARESTAURANT.COM)

## **NAVIYA'S THAI KITCHEN**

### **2812 W 43RD ST (0.4 MILES AWAY)**

THAI FLAVORS WITH A FOCUS ON FRESH INGREDIENTS, SERVING CLASSIC DISHES LIKE CURRIES, STIR-FRIES, AND NOODLES.  
> OUR RECOMMENDATION: CHICKEN SATAY STARTER, RED THAI CURRY (AMAZING TASTE BUT SPICY).  
612-276-5061 / [NAVIYAS.COM](http://NAVIYAS.COM)

# Eating & Drinking

## **THE HARRIET BRASSERIE**

**2724 W 43RD ST (0.5 MILES AWAY)**

REFINED YET RELAXED DINING EXPERIENCE, SERVING FRENCH-INSPIRED CUISINE WITH A MODERN TOUCH, CRAFT COCKTAILS, AND A COZY ATMOSPHERE IN THE HEART OF MINNEAPOLIS.

612-354-2197 / [LAKEHARRIETBRASSERIE.COM](http://LAKEHARRIETBRASSERIE.COM)

## **ROSALIA**

**2811 W 43RD ST (0.5 MILES AWAY)**

COZY NEIGHBORHOOD SPOT SERVING ARTISAN PIZZAS WITH FRESH, LOCALLY-SOURCED INGREDIENTS IN A WARM, INVITING ATMOSPHERE.

> OUR RECOMMENDATION: ALL THEIR PIZZAS ARE GREAT, AND CAN BE DELIVERED.

612-345-5494 / [ROSALIAPIZZA.COM](http://ROSALIAPIZZA.COM)

## **BRODERS' PASTA BAR**

**5000 PENN AVE S (1.0 MILES AWAY)**

A COZY NEIGHBORHOOD GEM SERVING MADE-TO-ORDER PASTA AND RISOTTO, COMPLEMENTED BY A SELECTION OF ITALIAN WINES AND DAILY SPECIALS THAT CELEBRATE AUTHENTIC FLAVORS.

612-925-9202 / [BRODERSPASTABAR.COM](http://BRODERSPASTABAR.COM)

## **RED COW**

**3624 W 50TH ST (1.0 MILES AWAY)**

TRENDY RESTAURANT KNOWN FOR GOURMET BURGERS AND CRAFT BEERS, MAKING IT A POPULAR SPOT FOR CASUAL DINING AND DRINKS.

612-767-4411 / [REDCOWMN.COM/MPLS-50TH-STREET](http://REDCOWMN.COM/MPLS-50TH-STREET)

## **COALITION RESTAURANT**

**3808 W 50TH ST (1.1 MILES AWAY)**

STYLISH EATERY IN A HISTORIC 1886 BRICK BUILDING, OFFERING ELEVATED AMERICAN CLASSICS WITH A MODERN TWIST.

952-456-8979 / [COALITIONRESTAURANT.COM](http://COALITIONRESTAURANT.COM)

## **COCINA DEL BARRIO**

**5036 FRANCE AVE S (1.2 MILES AWAY)**

STYLISH LATIN AMERICAN RESTAURANT SERVING BOLD, FLAVORFUL DISHES AND CREATIVE COCKTAILS PERFECT FOR GATHERING AND CELEBRATING.

952-920-1860 / [BARRIOTEQUILA.COM](http://BARRIOTEQUILA.COM)

**THESE ARE SOME OF OUR FAVORITES,  
THERE ARE MANY MANY MORE TO  
EXPERIENCE NEARBY...**

# Local Stores

## **TURTLE BREAD**

**3421 W 44TH ST (0.4 MILES AWAY)**

GREAT SELECTION OF BREADS AND CHEESES.

## **WEDGE LINDEN HILLS**

**3815 SUNNYSIDE AVE (0.6 MILES AWAY)**

A FULL RANGE OF GROCERIES, FRESH PRODUCE, DELI ITEMS, AND MORE. CONVENIENTLY LOCATED FOR ANY SHOPPING NEEDS.

## **WALGREENS**

**4916 FRANCE AVE S (1 MILE AWAY)**

HOME GOODS, CLOTHING, ELECTRONICS & MORE, PLUS EXCLUSIVE DESIGNER COLLECTIONS.

## **LUNDS & BYERLYS**

**3945 W 50TH ST (1.3 MILES AWAY)**

PREMIUM GROCERY STORE OFFERING FRESH PRODUCE, GOURMET FOODS, AND QUALITY DELI ITEMS.

## **TRADER JOE'S**

**4500 EXCELSIOR BLVD (1.8 MILES AWAY)**

GROCERY CHAIN FEATURING A RANGE OF SIGNATURE ITEMS, PRODUCE, DAIRY, AND MOSTLY SELL WINES AND BEER.

## **WHOLE FOODS MARKET**

**3060 EXCELSIOR BLVD (2.0 MILES AWAY)**

HIGH-QUALITY NATURAL AND ORGANIC FOODS, FRESH PRODUCE, AND GOURMET ITEMS WITH A FOCUS ON SUSTAINABILITY.



*Like what you see?*



*Shop our space*



# THE WORKS BNB

[WWW.THEWORKSBNB.COM](http://WWW.THEWORKSBNB.COM)

FOLLOW US @BRITFLIPPER

