



PAWS & RELAX RETREAT

Minneapolis MN



ARRIVAL



ADDRESS

3239 TYLER ST NE, MINNEAPOLIS, 55418



PARKING

- AT THE FRONT OF THE PROPERTY THERE IS STREET PARKING.
- THERE IS A SINGLE SPACE AT THE REAR OF THE PROPERTY.



HUMAN HEALTH

NORTH MEMORIAL HEALTH
3300 OAKDALE AVE N, ROBBINSDALE
(15 MINS DRIVE)
763-520-5200



PET HEALTH

PET CENTRAL ANIMAL HOSPITAL
2700 CENTRAL AVE NE, MINNEAPOLIS
(2 MINS DRIVE)
612-781-6941

GETTING AROUND



PUBLIC TRANSPORT

THE NEAREST BUS STOPS ARE ONE BLOCK AWAY ON CENTRAL AVE NE & 33RD AVE NE.



RIDESHARE

THERE ARE RIDE SHARE APPS AVAILABLE IN MINNEAPOLIS SUCH AS UBER AND LYFT.

C H E C K - I N

CHECK-IN IS ANY TIME AFTER 4PM.

WE WILL SEND YOU THE ACCESS CODE TO THE DOORS AT 9AM ON THE DAY OF YOUR ARRIVAL - THE CODE WILL BE THE SAME ON THE FRONT AND BACK DOOR.

TOUCH THE SCREEN ON THE LOCK TO MAKE THE NUMBERS APPEAR, KEY IN THE CODE, PRESS THE CHECKMARK SYMBOL AND THE DOOR SHOULD OPEN.

C H E C K - O U T

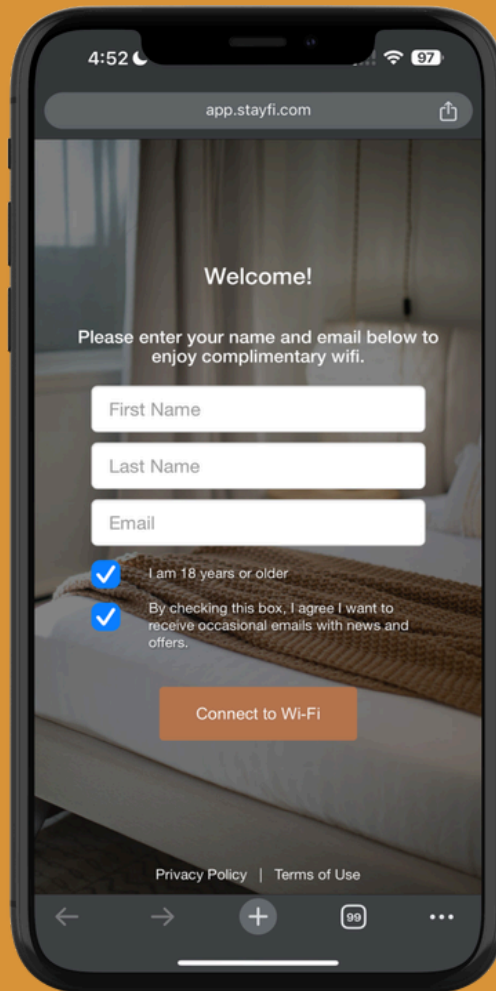
CHECK-OUT IS PRIOR TO 11AM.

WE REQUEST A FEW THINGS OF YOU TO HELP US:

- LEAVE DIRTY TOWELS IN THE BATHTUB
- EMPTY THE REFRIGERATOR OF FOOD
- LOAD THE DISHWASHER AND START IT
- TURN OFF ALL LIGHTS
- ENSURE THE DOORS ARE LOCKED
- TAKE TRASH OUT TO THE MAIN TRASH CANS BY THE GARAGE (AT THE BACK OF THE HOUSE)



INTERNET



FIND 'THE WORKS BNB GUEST' WIFI
NETWORK AND FOLLOW THE ON SCREEN
PROMPTS ON THE LOGIN PAGE (PICTURED)
- NO WIFI PASSWORD NEEDED

WELCOME

HELLO!

WELCOME TO THE PAWS & RELAX RETREAT, WHERE WE'VE TRIED TO MAKE THE EXPERIENCE AS PET FRIENDLY AS POSSIBLE.

WE ARE DOG OWNERS AND KNOW HOW TOUGH IT CAN BE TO TRAVEL WITH YOUR FURRY FRIENDS.

YOU DON'T HAVE TO COMPROMISE YOUR STAY JUST BECAUSE YOU WANT TO BRING YOUR PETS WITH YOU. WE BELIEVE THAT THE PETS ARE PART OF THE FAMILY AND SHOULD BE TREATED AS SUCH. THAT'S WHY WE'VE DESIGNED THE PROPERTY WITH A PET-FIRST MINDSET.

YOU'LL FIND EVERYTHING YOU NEED TO MAKE YOUR AND YOUR FURRY FRIEND'S STAY AS COMFORTABLE AS POSSIBLE. FROM DOG BEDS WITH REMOVABLE WASHABLE COVERS, TO A CANDY STORE OF PET TREATS. WE ALSO HAVE A WHOLE HOST OF PET FRIENDLY RECOMMENDATIONS FOR YOU IN THIS GUIDE.

CONTACT US



763-600-7279



contact@theworksbnb.com

GENERAL INFO

COOLING & HEATING

THERE IS A CENTRAL HVAC SYSTEM WITH A NEST THERMOSTAT LOCATED IN THE DINING ROOM FOR TEMPERATURE CONTROL FOR HEATING AND COOLING THROUGHOUT THE HOME.

GAMES & BOOKS

THERE ARE BOOKS IN THE BACK PORCH AND GAMES IN THE LIVING ROOM.

TRASH

- THERE IS A TRASH BIN IN THE KITCHEN.
- MAIN TRASH BINS ARE BY THE GARAGE (AT THE REAR OF THE PROPERTY).
- RECYCLING IS AVAILABLE (BLUE BIN) - ENSURE TRASH BAGS ARE NOT PLACED IN RECYCLING, THEY MUST GO IN THE TRASH.

DEVICE CHARGING

THERE ARE USB CHARGERS IN THE BEDROOMS. JUST BRING A CABLE.

SAFETY

- THERE ARE SMOKE / CARBON MONOXIDE DETECTORS IN THE HOUSE.
- DOORS DO NOT AUTOMATICALLY LOCK ON CLOSING
 - FROM INSIDE: TURN THE THUMB-TURN TO LOCK THE DOOR
 - FROM OUTSIDE: PRESS THE YALE BUTTON TO LOCK THE SMART LOCK
- USE THE HAND RAIL AT THE FRONT STEPS DURING COLDER MONTHS AS THE STEPS CAN BE SLIPPERY.
- THE STAIRS TO THE BASEMENT ARE STEEP - PLEASE USE THE HAND RAIL.

GENERAL INFO

KIDS

WE'VE PROVIDED SOME ESSENTIALS SO YOU CAN TRAVEL LIGHT - YOU CAN FIND THEM IN THE BASEMENT AND ON THE SHELVES IN THE HALLWAY:

- PACK & PLAY (SHELVES IN HALLWAY)
- HIGH CHAIR (BASEMENT)
- KIDS DINNERWARE

KITCHEN

WE'VE STOCKED THE KITCHEN WITH PLENTY OF QUALITY KITCHEN ESSENTIALS AND GADGETS FOR YOU TO COOK UP A STORM.

- FRIDGE / FREEZER
- OVEN / STOVE
- KEURIG DUO COFFEE MACHINE
- TOASTER
- KETTLE
- MICROWAVE
- BLENDER
- ALL POTS, PANS AND DISHES
- GLASSES
- MUGS
- SILVERWARE

SUPPLIES

WE'VE PROVIDED ALL THE ESSENTIALS SO YOU'RE READY TO GO ON DAY ONE (NOTE THAT HOUSEKEEPING / REPLENISHMENT OF SUPPLIES ARE NOT PROVIDED).

- TOILETRIES
- TOWELS
- HAIRDRYER
- COFFEE AND TEA
- SALT AND PEPPER
- OIL
- SUGAR
- HAND SOAP
- DISH SOAP
- LAUNDRY DETERGENT
- BED LINENS AND PILLOWS
- DUST PAN AND BRUSH, MOP, CLEANING PRODUCTS

HOUSE RULES

PETS

WE KNOW YOUR FURRY FRIENDS ARE GOING TO LOVE THEIR STAY, HOWEVER WE DO HAVE A FEW HOUSE RULES WE ASK OF YOU:

- ALL PET WASTE MUST BE DISPOSED OF IN THE EXTERIOR TRASH CANS.
- IF YOU ARE LEAVING DOGS UNATTENDED, ENSURE THE SOFA IS COVERED WITH DOG BLANKETS AND BEDROOM DOORS ARE CLOSED TO AVOID DOGS SITTING ON THE BED OR FURNITURE.
- WE CHARGE A PET FEE OF \$100 PER STAY, THIS COVERS THE COST OF EXTRA CLEANING. ANY DAMAGE CAUSED MAY RESULT IN EXTRA CHARGES.

NOISE

QUIET HOURS ARE 10PM TO 8AM DAILY. IF A NOISE COMPLAINT IS RECEIVED, YOU MAY BE ASKED TO VACATE THE PROPERTY WITH NO REFUNDS.

PARTIES

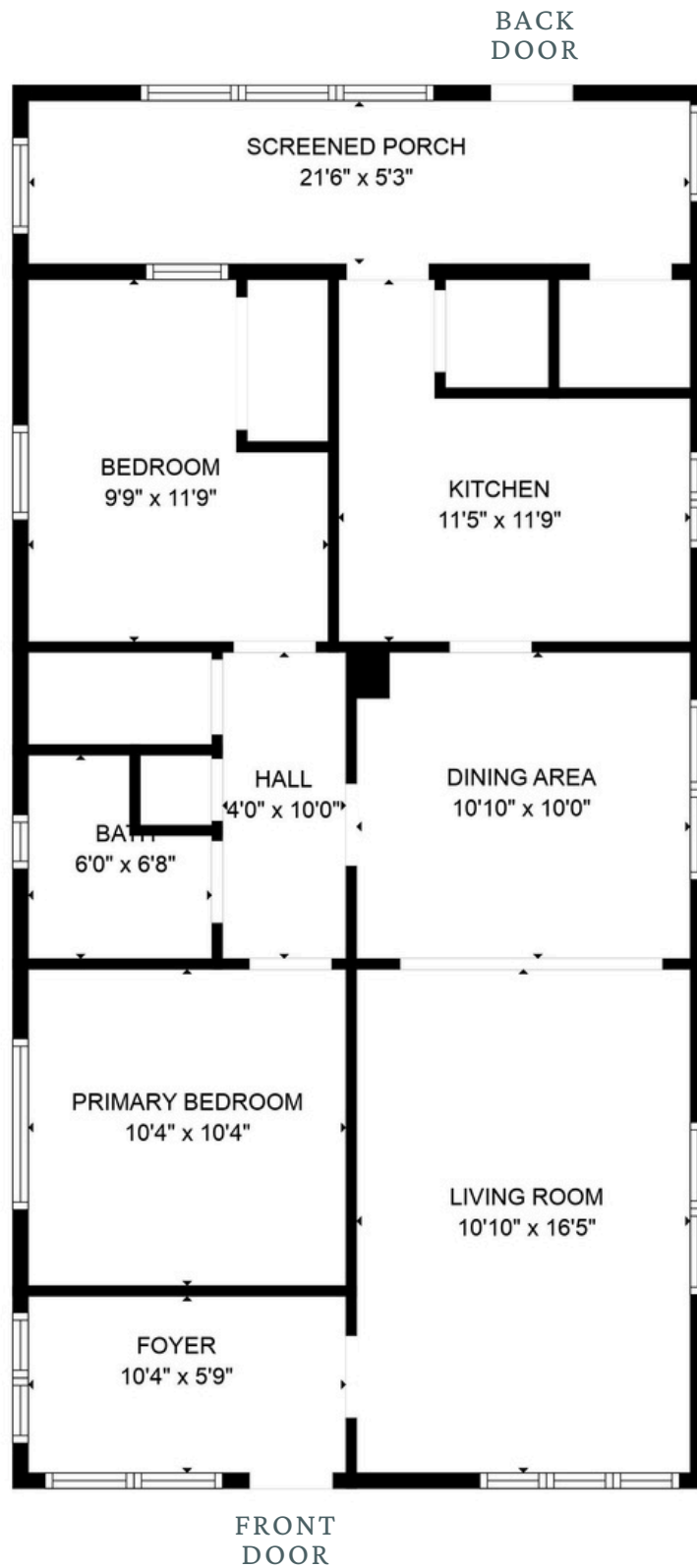
WE DON'T ALLOW PARTIES TO BE HELD AT THE PROPERTY, OUT OF RESPECT FOR THE NEIGHBORS AND THE ADDITIONAL WEAR AND TEAR ON THE PROPERTY. WE USE SECURITY CAMERAS OUTSIDE TO MONITOR ACCESS TO AND FROM THE PROPERTY, AND IF EVIDENCE OF LARGE PARTIES OR EVENTS IS FOUND, YOU MAY BE ASKED TO VACATE THE PROPERTY WITH NO REFUNDS.

SMOKING

TO MAINTAIN A PLEASANT ENVIRONMENT FOR ALL OUR GUESTS, NO SMOKING IS ALLOWED ON THE PROPERTY. IF EVIDENCE OF SMOKING IS FOUND A FEE OF UP TO \$250 MAY BE CHARGED TO COVER EXTRA CLEANING.

YOU ARE FREE TO SMOKE IN THE YARD. PLEASE DISPOSE OF EXTINGUISHED CIGARETTE BUTTS IN THE TRASH CAN.

FLOOR PLANS



SLEEPER SOFA

- THERE IS A SLEEPER SOFA IN THE LOUNGE, SUITABLE FOR 2 PERSONS.
- BEDDING IS STORED ON THE SHELVES IN THE HALLWAY.



- STEP 1: REMOVE THE CUSHIONS.
- STEP 2: PULL THE HANDLE UP AND TOWARDS YOU UNTIL THE FIRST LEG FOLDS OUT.



- STEP 3: UNFOLD THE SECOND LEG AND UNCURL THE REST OF THE BED.



OFF-LEASH DOG PARKS

- **ST. ANTHONY PARKWAY**

- 700 ST ANTHONY PKWY, MINNEAPOLIS, 55418
- 0.2 MILES: 2 MINS DRIVE / 16 MINS WALK

- **VICTORY PRAIRIE**

- 4701 RUSSELL AVE N, MINNEAPOLIS, 55412
- 4.2 MILES: 12 MINS DRIVE / 59 MINS WALK

- **LORING PARK**

- 1382 WILLOW ST, MINNEAPOLIS, 55403
- 7.4 MILES: 15 MINS DRIVE

- **LAKE OF THE ISLES**

- 2845 W LAKE OF THE ISLES PKWY, MINNEAPOLIS, 55408
- 8.3 MILES: 17 MINS DRIVE

- **MINNEAPOLIS AIRPORT**

- 6040 28TH AVE S, MINNEAPOLIS, 55417
- 13.5 MILES: 20 MINS DRIVE

DOG FRIENDLY BREWERIES

BAUHAUS BREW LABS

1315 TYLER ST NE, MINNEAPOLIS (1.9 MILES / 7 MINS DRIVE)

WELL-BEHAVED PUPS ARE WELCOME BOTH OUTSIDE AND INSIDE, SO BRING THEM DOWN TO MAKE NEW FRIENDS. THIS BREWERY TAKES A UNIQUE LOOK AT CLASSIC GERMAN-INSPIRED BEER STYLES, SKEWED SLIGHTLY BY A SENSE OF PLAY AND ADVENTURE. THEY ALSO HAVE A ROTATING FOOD TRUCK SCHEDULE, SO MAKE SURE TO CHECK THEIR WEBSITE!

INDEED BREWING COMPANY

711 NE 15TH AVE, MINNEAPOLIS (2.0 MILES / 7 MINS DRIVE)

DOG-FRIENDLY AND KID-FRIENDLY BREWERY. PUPS MUST BE LEASHED AND ON THE PATIO, BUT THEY'LL BRING OUT A WATER DISH FOR THEM TO DRINK WHILE YOU ENJOY A DELICIOUS BEER.

INBOUND BREWCO

701 N 5TH ST, MINNEAPOLIS (4.5 MILES / 14 MINS DRIVE)

CRAFT BREWERY AND TAPROOM LOCATED IN A CONVERTED RECYCLING FACILITY, FEATURING GERMAN BEER-HALL STYLE SEATING, FLOOR-TO-CEILING WINDOWS, A WALK-AROUND BAR, AND A SUNNY PATIO IN WARM MONTHS. DOGS ON NON-RETRACTABLE LEASHES ARE WELCOME INSIDE AND OUT AS LONG AS THEY DON'T GET ON THE FURNITURE.



DOG FRIENDLY BREWERIES

LAKES & LEGENDS BREWING

1368 LA SALLE AVE, MINNEAPOLIS (6 MILES / 14 MINS DRIVE)

ALL LEASHED, WELL-BEHAVED DOGS ARE ALLOWED IN BOTH THE TAPROOM AND OUTDOOR VIP AREA, YEAR-ROUND. THEY EVEN PROVIDE WATER BOWLS FOR YOUR PUP. ENJOY THEIR SEASONAL CRAFT BEERS OF THE NORTH, RANGING FROM TRADITIONAL STYLES TO LIMITED RELEASES INSPIRED BY LOCAL FARMS.

UTEPILS BREWING

225 THOMAS AVE N, MINNEAPOLIS (9 MILES / 18 MINS DRIVE)

BRING YOUR PUP TO CHECK OUT THEIR OUTDOOR PLAY AREA, GREAT FOR BOTH KIDS AND DOGS. THE BEVERAGE SELECTION FEATURES SESSION BEERS AND A NON-ALCOHOLIC LINEUP THAT ISN'T JUST FOR NON-DRINKING ADULTS, BUT INCLUDES FUN OPTIONS LIKE AN AMAZING ROOT BEER.

WILD MIND ARTISAN ALES

6031 PILLSBURY AVE S, MINNEAPOLIS (11 MILES / 18 MINS DRIVE)

YOUR PUP IS ALLOWED INSIDE AND OUT THE BREWERY AS LONG AS THEY ARE ON A LEASH AT ALL TIMES. TRY THEIR SNOOZE PASTRY STOUT, WLD WTR BLUEBERRY CRÈME HARD SELTZER, OR FRUIT SOUP SOUR ALE. THERE IS A CANINE RELIEF STATION IN FRONT OF THE TRASH ENCLOSURE ALONG PILLSBURY, HOWEVER YOUR PET MUST STILL BE CLEANED UP AFTER.



A photograph of a wooden nightstand with a lamp and a dog figurine. The nightstand is dark wood with two drawers, each featuring a diamond-shaped inlay pattern. On top of the nightstand is a lamp with a white shade and a small dog figurine. A tissue box is also visible on the nightstand. The background is a dark wall, and the floor is light wood with a patterned rug in the foreground.

PET ACTIVITIES

THE HITCHING COMPANY

925 N 5TH ST, MINNEAPOLIS (4.3 MILES / 12 MINS DRIVE)

TAKE YOUR PUP ON A PET-FRIENDLY CARRIAGE RIDE THROUGH MINNEAPOLIS. THIS MAGICAL HORSE-DRAWN CARRIAGE RIDE WILL TAKE YOU ALONG THE COBBLESTONES OF MAIN STREET AND SHOW YOU THE SKYLINE OF MINNEAPOLIS. LANDMARKS YOU MAY SEE INCLUDE MERRIAM STREET BRIDGE, HISTORIC HOMES OF NICOLLET ISLAND, DOWNTOWN MINNEAPOLIS SKYLINE AND HENNEPIN AVENUE BRIDGE. DOGS ARE WELCOME FOR NO ADDITIONAL FEE.

MINNEAPOLIS SCULPTURE GARDEN

725 VINELAND PL, MINNEAPOLIS (7 MILES / 14 MINS DRIVE)

LOCATED ON THE CAMPUS OF THE WALKER ART CENTER IN MINNEAPOLIS, THE PET-FRIENDLY MINNEAPOLIS SCULPTURE GARDEN FEATURES MORE THAN 40 WORKS THROUGHOUT 11 ACRES. DOGS ARE WELCOME TO JOIN THEIR HUMANS AS THEY AMBLE THROUGH THE ARTISTRY OF THE GARDEN, JUST MAKE SURE TO KEEP YOUR PET LEASHED AT ALL TIMES AND CLEAN UP AFTER HIM.

INDOOR ZOOMIES

10924 GREENBRIER RD, MINNETONKA (15 MILES / 23 MINS DRIVE)

A DOG PARK EXCLUSIVELY FOR SMALL DOGS (<30LBS). THE PLAY AREA IS FULLY FENCED IN AND HAS RAMPS FOR YOUR DOG TO PLAY ON. THE FUN STARTS ONCE THEY ARE REGISTERED AND UPLOAD VET RECORDS ON THE SITE. THEY OFFER A DAILY PASS, A 5 PASS PACK, AND A 10 PASS PACK.

PET ACTIVITIES

THE DOG TANK

2415 PILOT KNOB RD, MENDOTA HEIGHTS (18 MILES / 24 MINS DRIVE)

LOCAL DIVING AREA FOR DOGS OF ALL SHAPES AND SIZES. TRY THE 45' DOCK DIVING POOL, LEARN ABOUT THE SPORT OF DOCK DIVING, GET ACCLIMATED TO THE ATMOSPHERE OF DOCK DIVING OR JUST TAKE A LAP IN THE POOL TO COOL OFF ON A HOT MINNESOTA DAY. THEY OFFER CLASSES, PRIVATE SWIMS, PRIVATE LESSONS AND GROUP SWIMS.

MATOSKA PARK DOG BEACH

4898 LAKE AVE, WHITE BEAR LAKE (18 MILES / 27 MINS DRIVE)

FEATURING A SANDY BEACH AND SHALLOW WATER IDEAL FOR FETCHING. THERE'S A SEPARATE AREA FOR THE DOG BEACH, AND PUPS MUST NOT CROSS INTO THE PUBLIC AREA. DOGS ARE REQUIRED TO BE ON A LEASH AT ALL TIMES AND HAVE VISIBLE DOG TAGS. CLEAN UP ANY MESS LEFT BEHIND BY DOGS, AND MINIMIZE BARKING. IF YOU'RE VISITING THE PARK,

FORT SNELLING STATE PARK

101 SNELLING LAKE RD, SAINT PAUL (19 MILES / 27 MINS DRIVE)

RECREATION AREA LOCATED IN THE HEART OF THE TWIN CITIES IN NORTH SAINT PAUL. DOGS AND THEIR OWNERS CAN EXPLORE THE TRAILS IN THE AREA THAT LINK UP TO AN EXTENSIVE REGIONAL TRAIL SYSTEM. MAKE SURE YOU KEEP YOUR PUP ON A LEASH DURING THE VISIT AND CLEAN UP AFTER THEM.





DOG FRIENDLY RESTAURANTS

STANLEY'S NORTHEAST BAR ROOM

2500 UNIVERSITY AVE NE, MINNEAPOLIS (1.8 MILES / 5 MINS DRIVE)

BURGERS, SANDWICHES, CRAFT BEER. DOGS ARE WELCOME ON THE PATIO WHERE THEY RECEIVE COMPLIMENTARY WATER DISHES AND A DOG MENU COMPLETE WITH APPETIZERS, ENTREES, AND DESSERTS.

BRASA

600 E HENNEPIN AVE, MINNEAPOLIS (2.8 MILES / 9 MINS DRIVE)

ALLOWING DOGS IN THE OUTDOOR SEATING AREA. DELICIOUS, NOURISHING FOOD INSPIRED BY TRADITIONAL INGREDIENTS AND FLAVORS OF THE SOUTHERN U.S., CARIBBEAN AND MEXICO. FEATURING FRESH PRODUCE, 100% NATURAL & REGIONALLY SOURCED MEATS, ORGANIC EGGS, BEANS AND FAIR TRADE COFFEE & TEAS.

ASTER CAFE

125 SE MAIN ST, MINNEAPOLIS (3.3 MILES / 11 MINS DRIVE)

LOCATED UNDER THE TREES ON ONE OF THE PRETTIEST STREET IN MINNEAPOLIS. OVERLOOKING THE MIGHTY MISSISSIPPI RIVER AND THE SKYLINE OF THE CITY. ALLOWING DOGS ON THEIR OUTDOOR PATIO SEATING DURING THE SUMMER.

RED COW - NORTH LOOP

208 N 1ST AVE, MINNEAPOLIS (3.7 MILES / 12 MINS DRIVE)

A TRENDY BURGER BAR AND PUB THAT SERVES UP A VARIETY OF DELICIOUS GRUB. CHOOSE FROM MENU OPTIONS INCLUDING STARTERS, SOUPS, SALADS, BURGERS, FLATBREADS, SANDWICHES, AND MORE. YOUR PUP IS WELCOME TO JOIN YOU AT ONE OF THEIR 15 PET FRIENDLY OUTDOOR TABLES WHILE YOU ENJOY YOUR MEAL.

DOG FRIENDLY RESTAURANTS

IN THE LOOP COFFEE COMPANY

708 N FIRST ST, MINNEAPOLIS (4.2 MILES / 12 MINS DRIVE)

LOCATED IN THE NORTH LOOP NEIGHBORHOOD, PROVIDES PATRONS A VARIETY OF LOCALLY ROASTED ORGANIC COFFEES, TEAS, SMOOTHIES, SWEET AND SAVORY PASTRIES, SOUPS, SANDWICHES AND BREAKFAST ITEMS. DOGS ARE WELCOME BOTH INSIDE AND ON THE PATIO. BE SURE TO ORDER YOUR PUP A PUPPACHINO!

GIGI'S CAFE

822 W 36TH ST, MINNEAPOLIS (8.3 MILES / 16 MINS DRIVE)

A HAPPENING COFFEE HOUSE DURING THE DAY AND VIBRANT DINNER SPOT AT NIGHT, OFFERING VARIED CUISINE AND DOG-FRIENDLY OUTDOOR SEATING. THE THREE-MEALS-A-DAY MENU FEATURES BISCUITS AND GRAVY, CORNED BEEF HASH, QUICHE, HOT AND COLD SANDWICHES, BURGERS, PIZZA, CHORIZO TACOS, AND CHICKEN POT PIE. DOGS ARE WELCOME AT OUTDOOR TABLES DURING THE SUMMER. OPEN 7AM TO 9PM DAILY.

THE BUNGALOW CLUB

4300 E LAKE ST, MINNEAPOLIS (7.7 MILES / 17 MINS DRIVE)

A NEIGHBORHOOD FROM-SCRATCH RESTAURANT WITH A FOCUS ON HANDMADE PASTA BY CHEF ANDREW KRAFT. THE MENU CHANGES WEEKLY AND FEATURES UNIQUE PASTAS, SALADS, SMALL PLATES, AND PIZZAS. THE CHARMING BACK PATIO SEATING IS PET-FRIENDLY.



A photograph of a small, fluffy kitten with orange, black, and white fur perched on a wooden structure. The kitten is reaching up with its front paws towards a glowing incandescent lightbulb hanging from a cord. The background is a white slatted ceiling.

LOCAL STORES

EASTSIDE FOOD CO-OP

(GENERAL STORE WITH A LARGE VARIETY)

2551 CENTRAL AVE NE, MINNEAPOLIS

1 MILE / 3 MINS DRIVE

HOLY LAND RESTAURANT & STORE

(DIVERSE AND SIZABLE RANGE OF PRODUCTS INCLUDING MEATS, DRINKS, AND FOODS FROM VARIOUS REGIONS)

2513 CENTRAL AVE NE, MINNEAPOLIS

1 MILE / 3 MINS DRIVE

READY MEATS BUTCHERS

(PERSONAL RECOMMENDATION: BEEF AND JALAPEÑO MEAT STICKS - AMAZING!)

3550 JOHNSON ST NE, MINNEAPOLIS

1.2 MILES / 4 MINS DRIVE

CUB FOODS

(LARGE STORE, SUITABLE FOR THE BIGGER SHOPPING TRIPS, OR WHERE YOU NEED A LARGER VARIETY)

3930 SILVER LAKE RD NE, ST ANTHONY

1.9 MILES / 6 MINS DRIVE

TARGET

1650 NEW BRIGHTON BLVD, MINNEAPOLIS

2.3 MILES / 7 MINS DRIVE



THE WORKS BNB

WWW.THEWORKSBNB.COM

FOLLOW US @THEWORKSBNB

