



OLIVE + OAK

PLYMOUTH MN



WELCOME

WELCOME TO OLIVE & OAK IN THE LEAFY CITY OF PLYMOUTH MINNESOTA.

WE'RE SO GLAD YOU'VE CHOSEN THIS FAMILY FRIENDLY RETREAT FOR YOUR TIME AWAY. THIS HOME WAS DESIGNED WITH RELAXATION AND CONNECTION IN MIND — A PLACE TO SLOW DOWN, SOAK IN THE NATURAL BEAUTY OF PLYMOUTH AND ITS LEAFY SURROUNDINGS, AND MAKE LASTING MEMORIES WITH THE PEOPLE YOU LOVE MOST.

FROM YOUR FIRST SIP OF COFFEE IN THE SPACIOUS AND SUNNY GATHERING ROOM, TO EVENINGS GATHERED AROUND THE FIREPIT, OR LAUGHING OVER A FAMILY MEAL, WE HOPE EVERY MOMENT HERE FEELS EASY AND UNFORGETTABLE.

WE'RE SO HAPPY TO HOST YOU. IF YOU NEED ANYTHING AT ALL DURING YOUR STAY, JUST REACH OUT - WE'RE HERE TO HELP MAKE YOUR TRIP UNFORGETTABLE.

CONTACT US

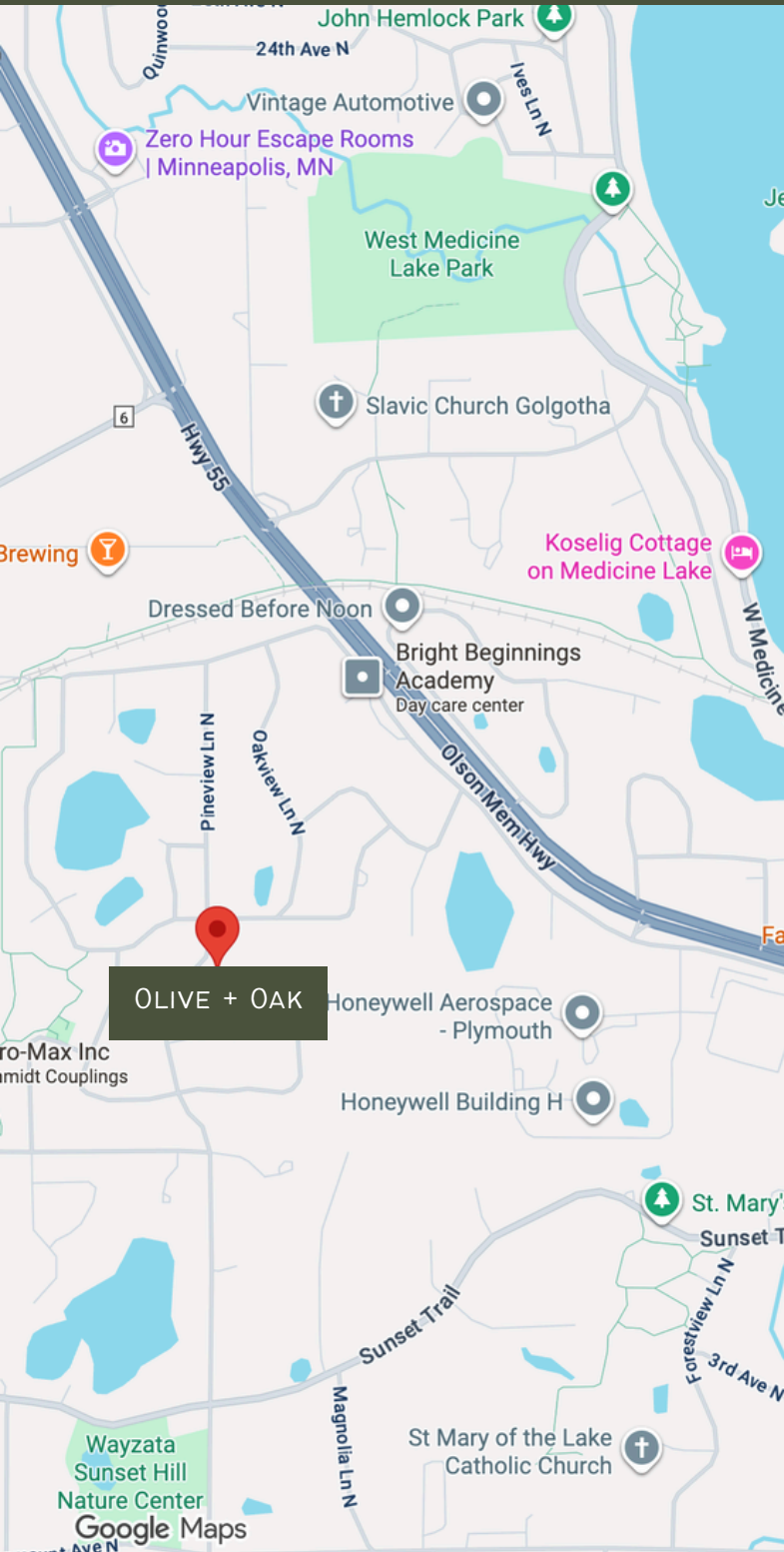


763-600-7279



CONTACT@THEWORKSBNB.COM

ARRIVAL



ADDRESS

940 WINDEMERE CURVE,
PLYMOUTH, MN 55441



PARKING

THE DOUBLE GARAGE CAN BE USED FOR
PARKING - THE CODE IS SHARED WITH
THE DOOR CODE ON THE DAY OF YOUR
ARRIVAL.

THE DRIVEWAY CAN COMFORTABLY FIT
4 VEHICLES.

NO STREET PARKING IS ALLOWED
OVERNIGHT (2AM - 5AM) PER CITY LAW
- YOU WILL RECEIVE A TICKET FROM
THE POLICE FOR STREET PARKING
DURING THIS TIME.



EMERGENCY

ABBOTT NORTHWESTERN ER & UC
2855 CAMPUS DR., PLYMOUTH, 55441
763-577-7160
(3.5 MILES / 8 MINS DRIVE)

CHECK IN

CHECK IN ANY TIME AFTER 4PM.

WE WILL SEND YOU THE ACCESS CODES AT AROUND 9AM ON THE DAY OF YOUR ARRIVAL.

TO OPEN THE FRONT DOOR, KEY IN THE CODE, PRESS THE CHECKMARK, AND THE DOOR SHOULD OPEN.

CHECK OUT

CHECK OUT IS PRIOR TO 11AM.

WE REQUEST A FEW THINGS OF YOU TO HELP US:

- LEAVE DIRTY TOWELS IN THE SHOWER OR TUB
- EMPTY THE REFRIGERATOR OF FOOD AND PUT ITEMS IN THE TRASH
- LOAD AND START DISHWASHER
- IF YOU HAVE ADJUSTED THE HVAC SIGNIFICANTLY, PLEASE REVERT IT TO 68F
- TURN OFF ALL LIGHTS
- CLOSE AND LOCK ALL WINDOWS
- ENSURE ALL DOORS ARE LOCKED



INTERNET

4:52 97

app.stayfi.com

Welcome!

Please enter your name and email below to enjoy complimentary wifi.

First Name

Last Name

Email

I am 18 years or older

By checking this box, I agree I want to receive occasional emails with news and offers.

Connect to Wi-Fi

Privacy Policy | Terms of Use

FIND 'THE WORKS BNB GUEST' WIFI
NETWORK AND FOLLOW THE ON SCREEN
PROMPTS ON THE LOGIN PAGE (PICTURED)
- NO WIFI PASSWORD NEEDED

GETTING AROUND



PLYMOUTH IS WELL CONNECTED WITH MAJOR ROAD NETWORKS, PUBLIC TRANSPORT AND RIDE SHARE SERVICES.



NEAREST BUS STOP

XENIUM LN & 10TH AVE N. (STOP ID: 44949)
(1.1 MILES AWAY / 3 MIN DRIVE)



NEAREST GAS STATION

HOLIDAY (189 CHESHIRE LN, PLYMOUTH)
(1.3 MILES AWAY / 4 MINS DRIVE)



NEAREST EV CHARGING STATION

13201 RIDGEDALE DR, MINNETONKA.
(2.1 MILES AWAY / 5 MINS DRIVE)

HOUSE ESSENTIALS

SO YOU'RE READY TO GO ON DAY ONE, THE FOLLOWING ARE PROVIDED:

- TOILETRIES
- TOWELS
- HAIRDRYERS
- COFFEE (GROUND AND KCUP), VARIOUS TEAS & CREAMERS
- SALT & PEPPER
- OIL
- SUGAR & SWEETENER
- HAND SOAP
- DISHWASHER DETERGENT & DISH SOAP
- LAUNDRY DETERGENT
- BED LINENS & PILLOWS
- VACUUM, DUST PAN & BRUSH, MOP, CLEANING PRODUCTS

NOTE: REPLENISHMENT OF SUPPLIES ARE NOT PROVIDED. HOUSEKEEPING IS AVAILABLE AT AN ADDITIONAL COST AND DEPENDING ON AVAILABILITY.



KITCHEN + SUPPLIES

THE KITCHEN HAS PLENTY OF MODERN EQUIPMENT AND QUALITY KITCHEN ESSENTIALS FOR YOU TO COOK UP A STORM:

- FULL SIZE FRIDGE / FREEZER WITH FRONT ACCESSIBLE ICE MAKER AND WATER DISPENSER
- GAS RANGE
- ABOVE-THE-RANGE MICROWAVE
- DISHWASHER
- COFFEE MACHINE WITH KEURIG K-CUP AND DRIP COFFEE OPTIONS
- TOASTER
- ELECTRIC KETTLE
- BLENDER
- RICE COOKER
- AIR FRYER
- POTS, PANS AND DISHES
- GLASSES
- MUGS AND WINE GLASSES
- SILVERWARE



GENERAL INFO

TV'S

THERE ARE 3 TV'S IN THE HOUSE:

- 75" GOOGLE TV IN THE MAIN FLOOR LIVING ROOM
- 65" GOOGLE TV IN THE GAMES ROOM (VIEWABLE FROM THE KITCHEN)
- 75" GOOGLE TV IN THE BASEMENT TV ROOM WITH A SOUNDBAR

NO TV SUBSCRIPTIONS ARE PROVIDED - MANY CHANNELS INSTALLED ARE FREE TO WATCH, AND YOU CAN LOG INTO APPS YOURSELF (SUCH AS NETFLIX) USING YOUR OWN ACCOUNT - REMEMBER TO LOG OUT BEFORE YOU LEAVE.

IN THE UNLIKELY EVENT YOU CANNOT FIND A REMOTE, YOU CAN USE A REMOTE FROM THE OTHER TV (THEY ARE ALL THE SAME MODEL).

LAUNDRY

THE HOUSE HAS A WASHER AND DRYER IN THE LAUNDRY ROOM. WE PROVIDE LAUNDRY DETERGENT AND DRYER SHEETS.

DEVICE CHARGING

THERE IS A CHARGE DOCK IN EACH BEDROOM, AND ALSO USB WALL OUTLETS IN THE KITCHEN, BRING YOUR OWN CABLE.

GARAGE

THE GARAGE IS AVAILABLE TO USE - WE WILL PROVIDE YOU THE CODE ALONG WITH THE FRONT DOOR CODE, OR YOU CAN ACCESS IT FROM INSIDE THE HOUSE.

MORE INFO

COOLING & HEAT

THE HOUSE HAS CENTRAL HVAC THROUGHOUT. THE NEST THERMOSTAT IS IN THE DINING ROOM ON THE MAIN FLOOR - JUST TURN THE DIAL TO RAISE AND LOWER THE TEMPERATURE.

THE HOME ALSO HAS A WOOD BURNING FIREPLACE - WOOD, FIRELIGHTERS, KINDLING, MATCHES AND SCREEN ARE PROVIDED. SPARE WOOD IS ON THE GARAGE SHELVING.

TRASH

- THE KITCHEN HAS TWO TRASH CANS TO SEGREGATE TRASH AND RECYCLING.
- EACH BATHROOM HAS A TRASH CAN.
- MAIN TRASH CANS ARE BY THE SIDE OF THE HOUSE (2 GREEN TRASH, BINS 1 BLUE RECYCLING BIN)
 - DO NOT PLACE TRASH BAGS IN THE RECYCLING BIN AS THE HAULER WILL REFUSE COLLECTION
- TRASH IS TAKEN OUT FOR THE HAULER ON A WEDNESDAY NIGHT FOR COLLECTION ON THURSDAY - NOTHING REQUIRED OF YOU.

SNOW DAY

A SNOW CLEARING SERVICE IS ASSIGNED ONCE THE SNOW IS AT 2" DEEP. A SNOW PUSHER IS HUNG IN THE GARAGE IF YOU WISH TO USE IT. IF ICE MELT IS AVAILABLE, YOU MAY USE IT.

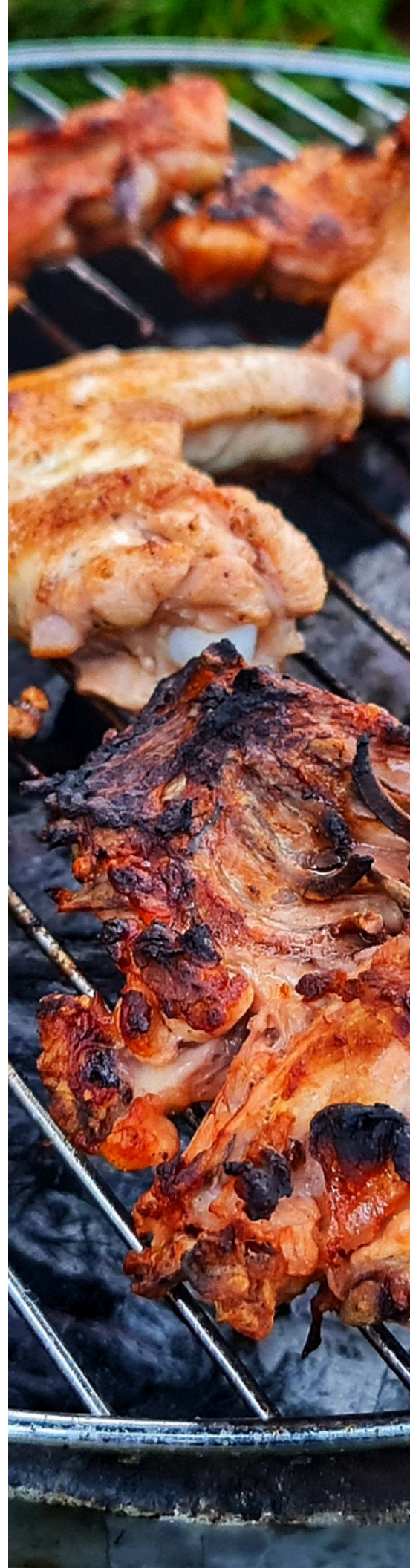
SAFETY

- THERE ARE SMOKE / CARBON MONOXIDE DETECTORS THROUGHOUT THE HOUSE.
- THERE IS A SECURITY CAMERA AT THE FRONT OF THE HOUSE.
- NEVER LEAVE THE FIREPLACE, FIRE PIT, OR A BBQ UNATTENDED WHILE LIT.
- IF THERE IS A POWER ISSUE, THE BREAKER PANEL IS IN THE GARAGE WALL.
- BE CAREFUL IN THE YARD AREA, THE EQUIPMENT IS NOT MAINTAINED, NOR IS THE SCRUB AREA.
- A SNOW CLEARING SERVICE IS PROVIDED - SALT AND A SNOW PUSHER ARE STORED IN THE GARAGE IN CASE THE SNOW HAS NOT YET BEEN CLEARED.

PATIO

THE PATIO AT THE REAR OF THE HOME (ACCESSIBLE EITHER VIA THE KITCHEN, OR THE SIDE OF THE HOUSE) HAS AS NUMBER OF ITEMS TO ENSURE YOU CAN ENJOY SOME TIME OUTSIDE THE HOUSE:

- A GAS FIRE PIT WITH 4 SEATS
 - SPARE PROPANE IS THE IN THE STORAGE BOX BY THE SIDE OF THE HOUSE - DO LET US KNOW IF YOU USE THIS SO WE CAN REFILL THE OLD CANISTER
- A TALL TABLE WITH 2 HIGH-TOP CHAIRS
- A 22" WEBER CHARCOAL BBQ
 - CHARCOAL, CHIMNEY STARTER, LIGHTER, AND UTENSILS ARE IN THE STORAGE BOX BY THE SIDE OF THE HOME
 - PLEASE CLEAN UTENSILS AND PUT THEM BACK IN THE STORAGE BOX BEFORE YOU CHECK OUT
- THE PATIO LOOKS OUT ON THE KIDS PLAY AREA



OUTDOOR PLAY FOR KIDS



- THE BACK YARD HAS A KIDS PLAY AREA, WITH SLIDE AND SWINGS (OVER SOFT LANDING RUBBER NUGGETS), AS WELL AS A SAND PIT.
 - KIDS ONLY ON THE PLAY SET - NO ADULTS DUE TO WEIGHT LIMITS
- BY THE SIDE OF THE DRIVEWAY, THERE IS A TREE-SWING - MAXIMUM 100LB WEIGHT LIMIT
- IT IS STRONGLY RECOMMENDED TO AVOID THE SCRUB AREA OF THE YARD (PAST THE PLAY SET) AS THIS IS NOT MAINTAINED.
- CHILDREN SHOULD BE SUPERVISED AT ALL TIMES.
- NOTE: EQUIPMENT IS USED AT OWN RISK - THEY ARE NOT MAINTAINED OR GUARANTEED WORKING BY THE PROPERTY OWNERS.

FOR THE KIDS INSIDE

SECRET PLAYROOM

PEEK INSIDE THE BASEMENT MASTER CLOSET, OPEN THE CURTAINS, AND STEP INTO A SECRET, NARNIA-STYLE PLAYROOM FULL OF ADVENTURE!

ESSENTIALS

WE'VE PROVIDED THE ESSENTIALS SO YOU CAN FEEL SAFE AND TRAVEL LIGHT.

- A QUIET PLAY AREA IN THE LOWER LEVEL BEDROOM WITH TOYS
- CHILD PROOFING KIT (HALLWAY CLOSET)
- PACK & PLAY (MASTER BEDROOM CLOSET)
- HIGH CHAIR (HALLWAY CLOSET)
- KIDS DINNERWARE (KITCHEN)
- VARIOUS GAMES ARE IN THE LOUNGE DRAWS.



HOUSE LAYOUT

THE HOUSE IS 2700SQFT OVER 3 LEVELS

- TOP FLOOR

- BEDROOM 1: KING BED, EN SUITE BATHROOM WITH SHOWER, CLOSET (SHELVES & HANGING RAIL)
- BEDROOM 2: TWO SINGLE BEDS, CLOSET (SHELVES & HANGING RAIL)
- BEDROOM 3: KING BED, CLOSET (SHELVES & HANGING RAIL)
- BEDROOM 4: QUEEN BED, CLOSET (SHELVES & HANGING RAIL)
- SHARED BATHROOM: COMBO BATH/SHOWER

- MAIN FLOOR (GROUND LEVEL)

- ENTRYWAY STORAGE CLOSET, SHELVES AND HANGING RAIL
- LOUNGE: 3 LARGE SOFAS, 75" TV
- DINING: LARGE DINING TABLE ABLE TO SEAT 8
- KITCHEN: FULL SIZE FRIDGE WITH DOOR ICE/WATER MACHINE, GAS RANGE, ABOVE-THE-RANGE MICROWAVE, DISHWASHER, COFFEE MACHINE, AND ALL DISHES AND CUTLERY
- KITCHEN EXTENSION: EXTRA SEATING AND TABLE (4 PERSONS), 65" TV
- HALF BATHROOM
- ACCESS TO YARD VIA DOOR AT THE SIDE OF THE KITCHEN

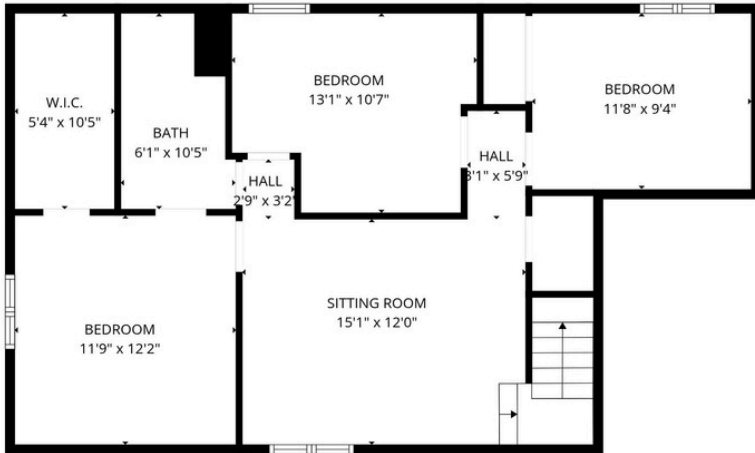
- LOWER LEVEL

- LARGE CORNER SOFA, 75" TV AND SOUNDBAR
- BEDROOM 5: KING BED WITH JACK-AND-JILL BATHROOM WITH SHOWER (ACCESSIBLE FROM OUTSIDE DOOR), LARGE CLOSET INCLUDING KIDS PLAY AREA (+ SHELVES AND HANGING RAILS)
- BEDROOM 6: TWO SINGLE BEDS, CLOSET (SHELVES AND HANGING RAILS)
- SERVICES ROOM INCLUDING WASHER, DRYER AND ADDITIONAL FRIDGE FREEZER

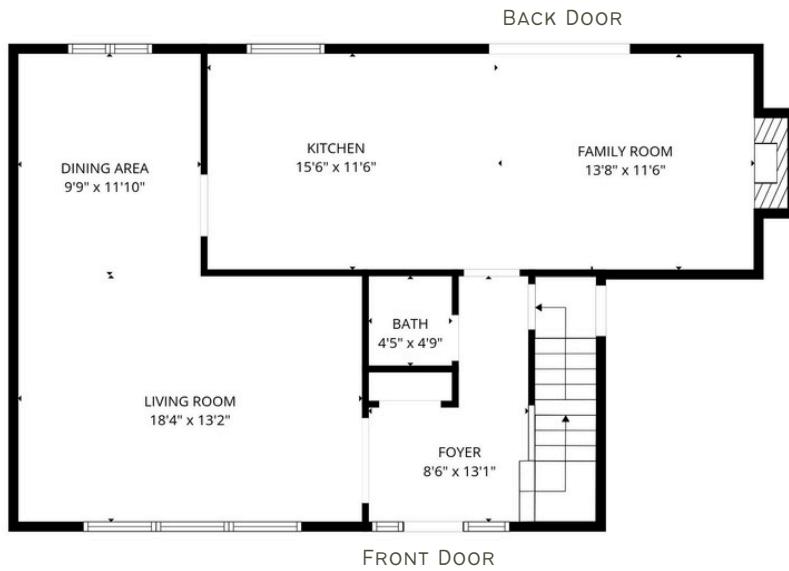
FLOOR PLANS

APPROX. MEASUREMENTS ONLY

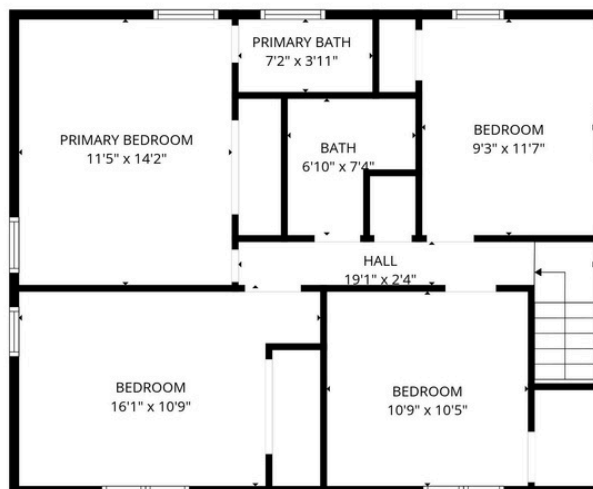
TOP FLOOR



MAIN FLOOR
(GROUND LEVEL)



LOWER LEVEL



HOUSE RULES

NOISE LEVELS

QUIET HOURS ARE 10PM TO 8AM DAILY. IF A NOISE COMPLAINT IS RECEIVED, YOU MAY BE ASKED TO VACATE THE PROPERTY WITH NO REFUNDS.

AT ALL TIMES PLEASE BE RESPECTFUL OF OUR NEIGHBORS AS MANY CHILDREN AND ELDERLY LIVE NEARBY - ESPECIALLY IF RETURNING TO THE PROPERTY LATE.

NO PETS

PETS ARE NOT ALLOWED AT THE PROPERTY.

NO SMOKING

THERE IS NO SMOKING INSIDE THE PROPERTY.

NO PARTIES

WE DON'T ALLOW PARTIES TO BE HELD AT THE PROPERTY OUT OF RESPECT FOR THE NEIGHBORS AND THE ADDITIONAL WEAR AND TEAR ON THE PROPERTY.

WE USE SECURITY CAMERAS OUTSIDE TO MONITOR ACCESS TO AND FROM THE PROPERTY.

NO FIREWORKS

NO FIREWORKS ARE ALLOWED AT THE PROPERTY.

IF EVIDENCE OF ANY OF THE ABOVE IS FOUND, YOU WILL BE CHARGED A FEE OF \$250 AND MAY BE ASKED TO VACATE THE PROPERTY WITH NO REFUNDS.

EXPLORATION



MILLENNIUM GARDEN (4.6 MILES AWAY)

SITUATED AT THE COMMUNITY CENTER, SHOWCASES MULTIPLE GARDENS, FOUNTAINS, AND A LABYRINTH FOR EXPLORATION.



CLIFTON FRENCH REGIONAL PARK (5 MILES AWAY)

FEATURES A PUBLIC SWIMMING BEACH, A BOAT LAUNCH, PLAYGROUNDS, A SLEDDING HILL, AND AN ARRAY OF OTHER ACTIVITIES.



EAGLE LAKE REGIONAL PARK (8 MILES AWAY)

BOASTS BIKING AND HIKING TRAILS, CROSS-COUNTRY SKIING, DOG-FRIENDLY PATHS, FISHING SPOTS, GEOCACHING, AND VARIOUS OTHER RECREATIONAL OPTIONS

PLYMOUTH ALSO OFFERS AN EXTENSIVE NETWORK OF 147 MILES OF PUBLIC TRAILS FOR OUTDOOR ENTHUSIASTS TO ENJOY.

ENTERTAINMENT



HILDE PERFORMANCE CENTER (4 MILES AWAY)

THE 45-FOOT TALL OPEN-AIR FACILITY IS BUILT FOR EXCELLENT ACOUSTICS IN AN OUTDOOR SETTING. A GLASS WALL IN THE BACK OF THE BANDSHELL ALLOWS THE AUDIENCE TO VIEW THE NATURAL BEAUTY OF PLYMOUTH'S WETLANDS BEYOND THE STAGE.



PLYMOUTH GRAND 15 (7 MILES AWAY)

BOWLING ALLEY AND BAR OFFERING FOOD SUCH AS PRIME RIB, BURGERS, AND SHRIMP BASKETS.



PICKLEBALL COURTS (11 MILES AWAY)

PLAY PICKLEBALL AT 212 6TH ST NW IN PERHAM. THERE ARE 8 OUTDOOR CONCRETE COURTS. THE COURTS ARE FREE. AMENITIES INCLUDE RESTROOMS. LOCATED AT ARVIG PARK- AMPLE PARKING

LOCAL BARS

NORTHERN TAPHOUSE

**220 CARLSON PKWY N, PLYMOUTH
(1.6 MILES AWAY, 6MINS DRIVE)**

CASUAL SPORTS BAR SERVING BRICK-OVEN PIZZAS, WINGS, BURGERS, BEER AND COCKTAILS.

MANY TV'S MAKE IT GREAT FOR SPORTS DAYS, BUT NOTE THAT ITS SUPER BUSY IN THE BEER GARDEN ON WARMER DAYS.

OUR RECOMMENDATION: BLACKSTACK 755 IPA (A GREAT LOCAL IPA), AND A GARLIC WOOD FIRED PIZZA. THE BURGERS ARE ALSO VERY GOOD.

LUCE LINE BREWING

**12901 16TH AVE N, PLYMOUTH
(2.0 MILES AWAY, 5MINS DRIVE)**

GREAT LOCAL BREWERY WITH VARIOUS BEERS AND SELZERS. FOOD AVAILABLE VIA FOOD TRUCKS.

ROCK ELM TAVERN

**16605 COUNTY ROAD 24, PLYMOUTH
(5.4 MILES AWAY, 13MINS DRIVE)**

A HEARTY BAR MENU, INCLUDING BURGERS & PASTA, SERVED WITH CRAFT BEER IN A WARM SPACE.





GROCERIES

CUB FOODS PLYMOUTH

10200 6TH AVE N, PLYMOUTH

(4.3MILES / 9MINS DRIVE)

CONVENIENT SUPERMARKET OFFERING A RANGE OF GROCERIES AND MEAT, PLUS A DELI HOT CASE AND BAKERY.

LUNDS & BYERLYS PLYMOUTH

3455 VICKSBURG LANE N, PLYMOUTH

(4.6MILES / 10MINS DRIVE)

LARGE UPSCALE SUPERMARKET PROVIDING GROCERIES, BAKERY, BUTCHERS, DELI, AND A CARIBOU COFFEE.

FRESH THYME MARKET

15760 32ND AVE N, PLYMOUTH

(4.6MILES / 10MINS DRIVE)

GROCERY STORE PROVIDING ORGANIC AND NATURAL FOODS AND FEATURING A DELI, A BAKERY AND A SALAD BAR.

HY-VEE PLYMOUTH

16705 COUNTY RD 24, PLYMOUTH

(4.9MILES / 11MINS DRIVE)

GROCERY STORE CHAIN WITH A DELI, BAKERY, BUTCHER SECTION AND A SALAD BAR.



THE WORKS BNB

WWW.THEWORKSBNB.COM

FOLLOW US @THEWORKSBNB

